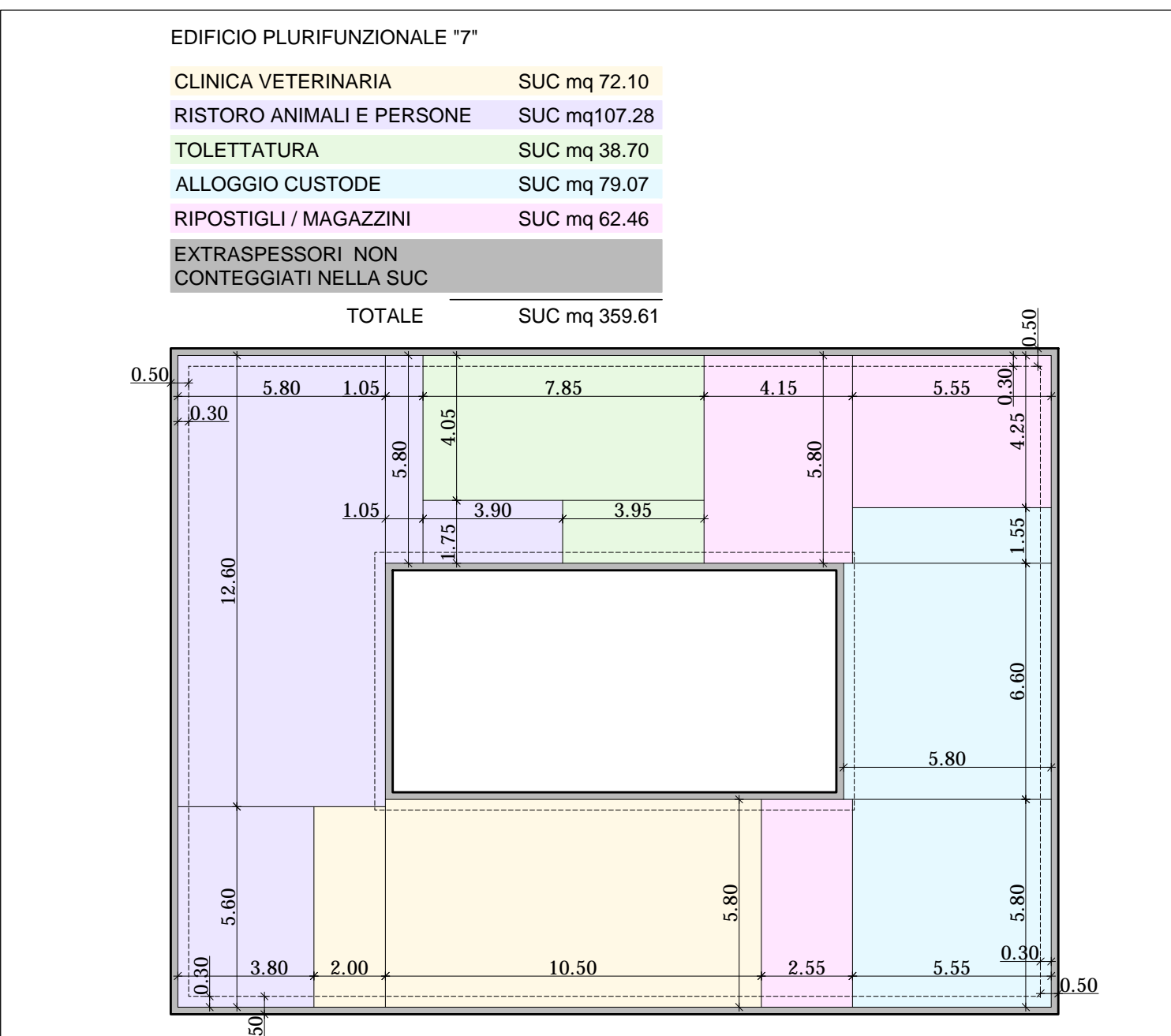
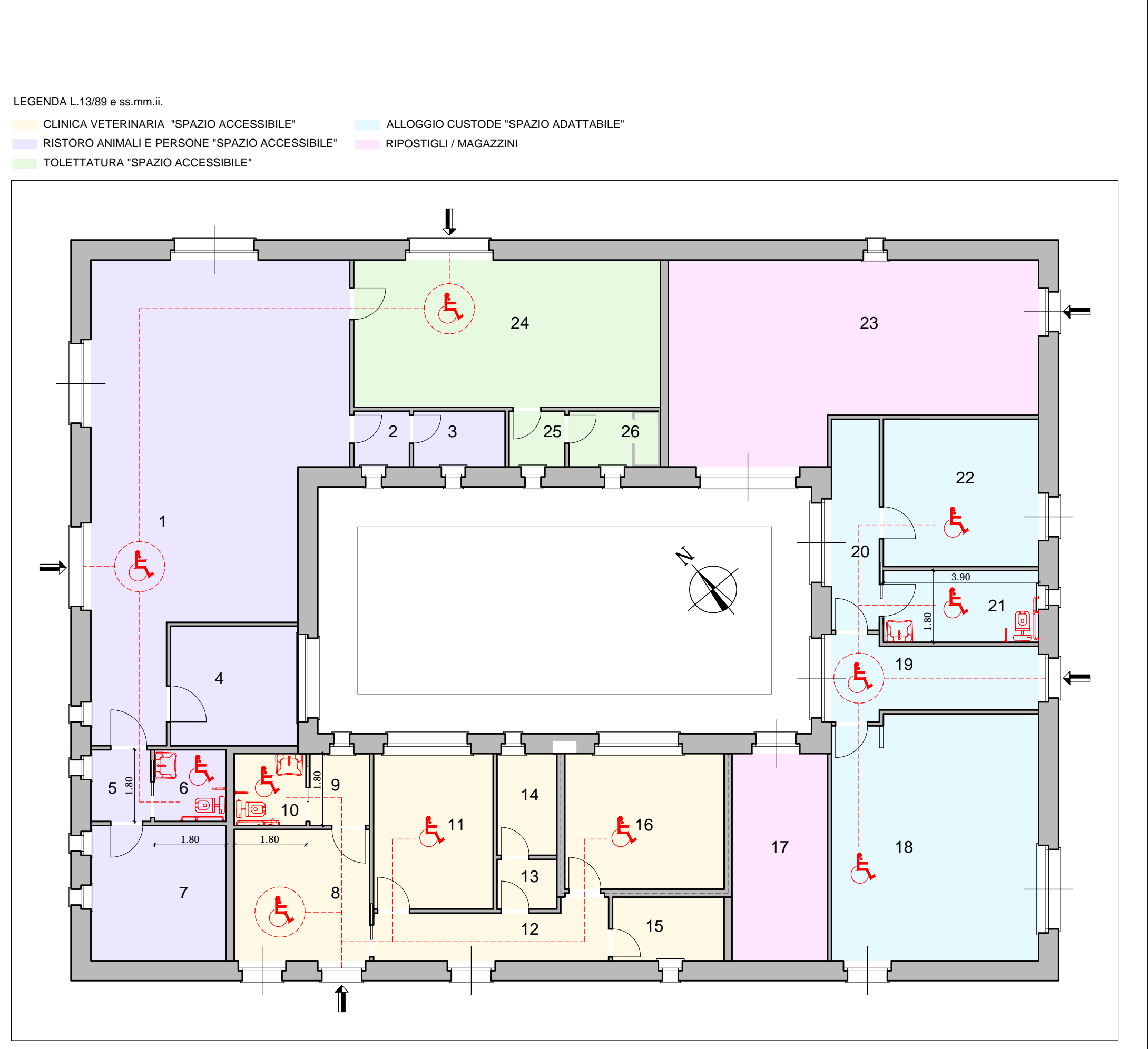
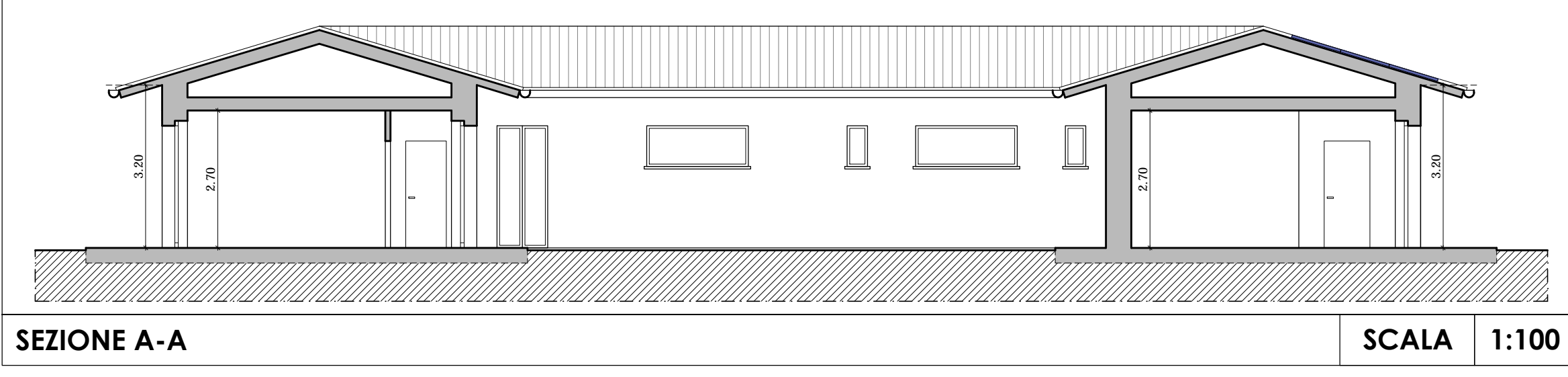
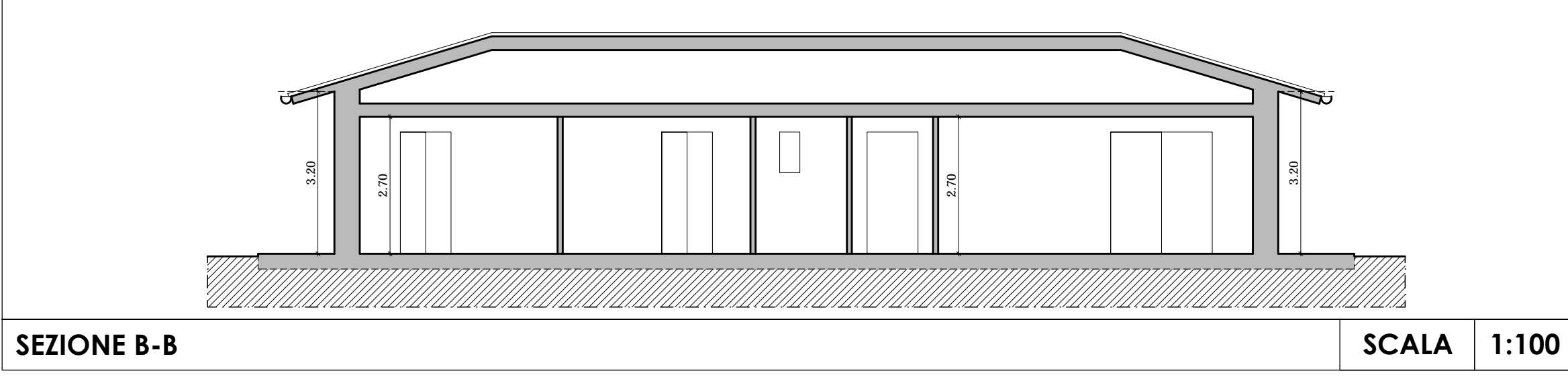
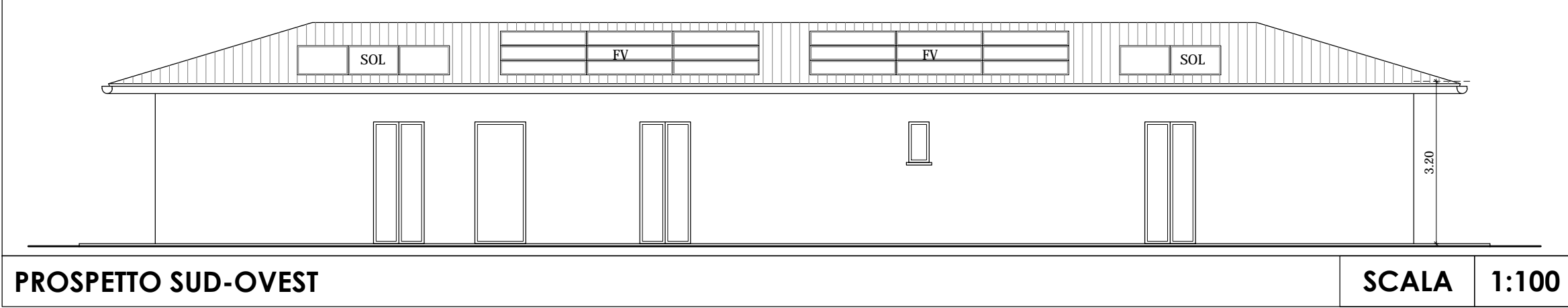
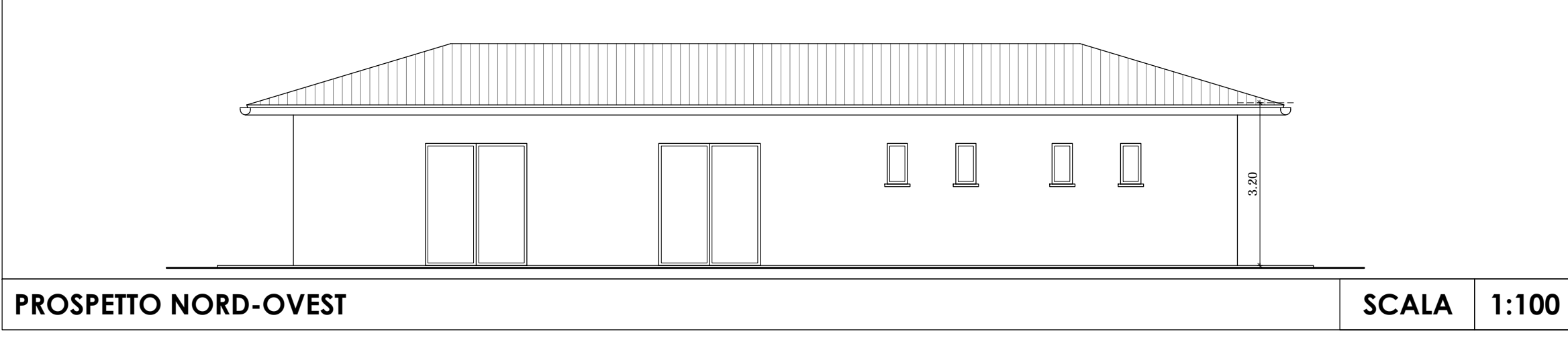
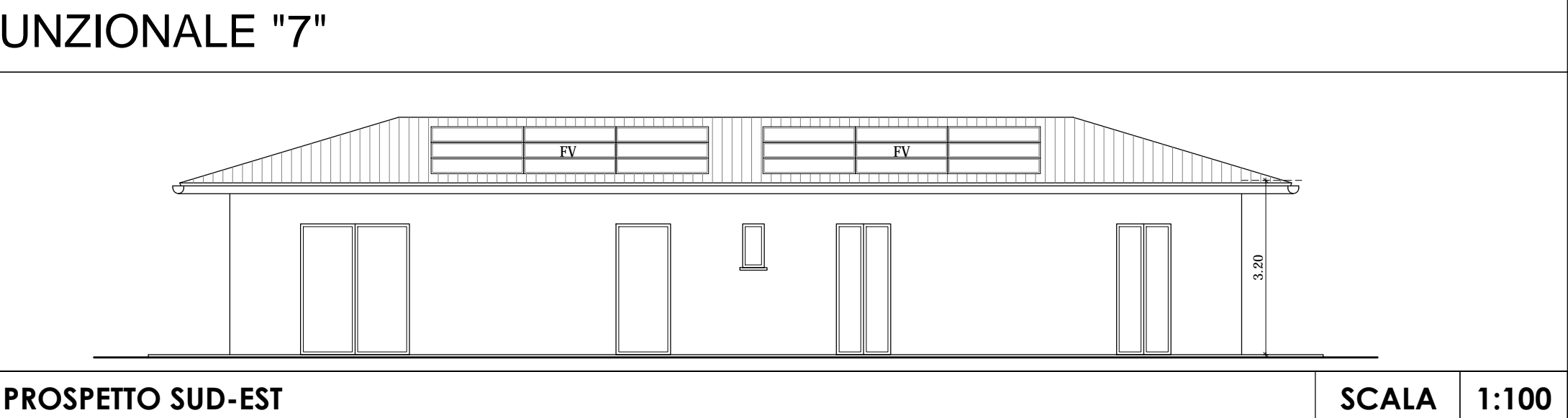
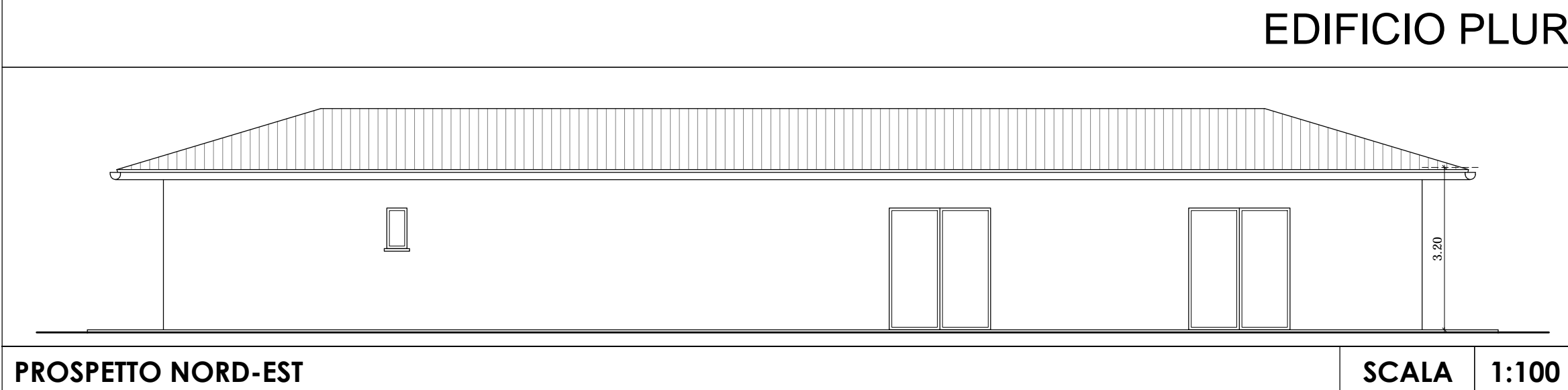


NUMERO STANZA	STANZA	SUP. mq	SUP. AEROL- LUMINANTE MIN. 1/8	SUP. AEROL- LUMINANTE PROGETTO	
1	PUNTO RISTORO ANIMALI	mq 59.97	mq 59.97/8=mq7.46	(m2.00xm2.40)xn.3+(m0.40xm0.85)= mq14.74	RISTORO ANIMALI E PERSONE
2	ANTIBAGNO / SPOGLIATOIO	mq 1.96		(m0.40xm0.85)=mq 0.34	
3	BAGNO PERSONALE	mq 3.22		(m0.40xm0.85)=mq 0.34	
4	UFFICIO	mq 9.60	mq 9.60/8=mq1.20	(m2.00xm0.85)= mq1.70	
5	DISIMPEGNO	mq 2.70		(m0.40xm0.85)=mq 0.34	
6	BAGNO DISABILI	mq 3.24			CLINICA VETERINARIA
7	RIPOSTIGLIO	mq 11.56		(m0.40xm0.85)xn.2=mq 0.68	
8	SALA ATTESA	mq 11.22	mq 11.22/8=mq1.28	(m1.00xm2.40)xn.2= mq4.80	
9	ANTIBAGNO	mq 2.70		(m0.40xm0.85)=mq 0.34	
10	BAGNO DISABILI	mq 3.24			
11	UFFICIO VETERINARIO	mq 11.70	mq 11.70/8=mq1.46	(m2.00xm0.85)= mq1.70	RIP./MAG.
12	DISIMPEGNO	mq 7.56		(m1.00xm2.40)= mq2.40	
13	ANTIBAGNO / SPOGLIATOIO	mq 1.88			
14	BAGNO PERSONALE	mq 3.83		(m0.40xm0.85)=mq 0.34	
15	RIPOSTIGLIO	mq 4.48		(m0.40xm0.85)=mq 0.34	
16	SALA RADIOGRAFIE / UFFICIO	mq 13.60	mq 13.60/8=mq1.70	(m2.00xm0.85)= mq1.70	ALLOGGIO CUSTODE
17	RIPOSTIGLIO / MAGAZZINO	mq 12.48		(m1.00xm2.40)= mq2.40	
18	PRANZO / SOGGIORNO	mq 31.85	mq 31.85/8=mq3.98	(m2.00xm2.40)+(m1.00xm2.40)= mq6.00	
19	INGRESSO	mq 9.04		(m2.00xm2.40)+(m1.00xm2.40)= mq6.00	
20	DISIMPEGNO	mq 6.36		(m2.00xm2.40)= mq4.80	
21	BAGNO	mq 7.02		(m0.40xm0.85)=mq 0.34	RIP./MAG.
22	CAMERA MATRIMONIALE	mq 14.43	mq 14.43/8=mq1.80	(m1.00xm2.40)= mq2.40	
23	RIPOSTIGLIO / MAGAZZINO	mq 41.47		(m2.00xm2.40)+(m1.00xm2.40)+(m0.40xm0.85)= mq6.34	
24	TOILETTATURA	mq 28.49	mq 28.49/8=mq3.56	(m2.00xm2.40)= mq4.80	
25	ANTIBAGNO / SPOGLIATOIO	mq 1.96		(m0.40xm0.85)=mq 0.34	
26	BAGNO PERSONALE	mq 3.22		(m0.40xm0.85)=mq 0.34	TOILETTATURA

**TABELLA RIEPILOGATIVA SUPERFICI**



RIEPILOGO SUC EDIFICIO PLURIFUNZIONALE "7"



**PROVINCIA DI PERUGIA**

**REALIZZAZIONE CENTRO CINOFILO "FUNNY DOG"**

Intervento ai sensi dell'art.32 della L.R. n.1/2015 e ss.mm.ii.  
 vocabolo Santa Lucia snc  
 Terreni censiti catastalmente al foglio 7 particelle 135-906-909-910-914-916

**TAV.07**

Committente/Delegato: **FUNNY DOG** di Casoli Leonardo  
 • Impresa "FUNNY DOG" di Casoli Leonardo  
 Tel. 338 3032900

Progettista: **Maurizio Bellaveglia** geometra  
 Collaboratore: **Maurizio Torti** perito industriale

**COMUNE di CANNARA**

**STATO DI PROGETTO EDIFICIO PLURIFUNZIONALE "7"**

