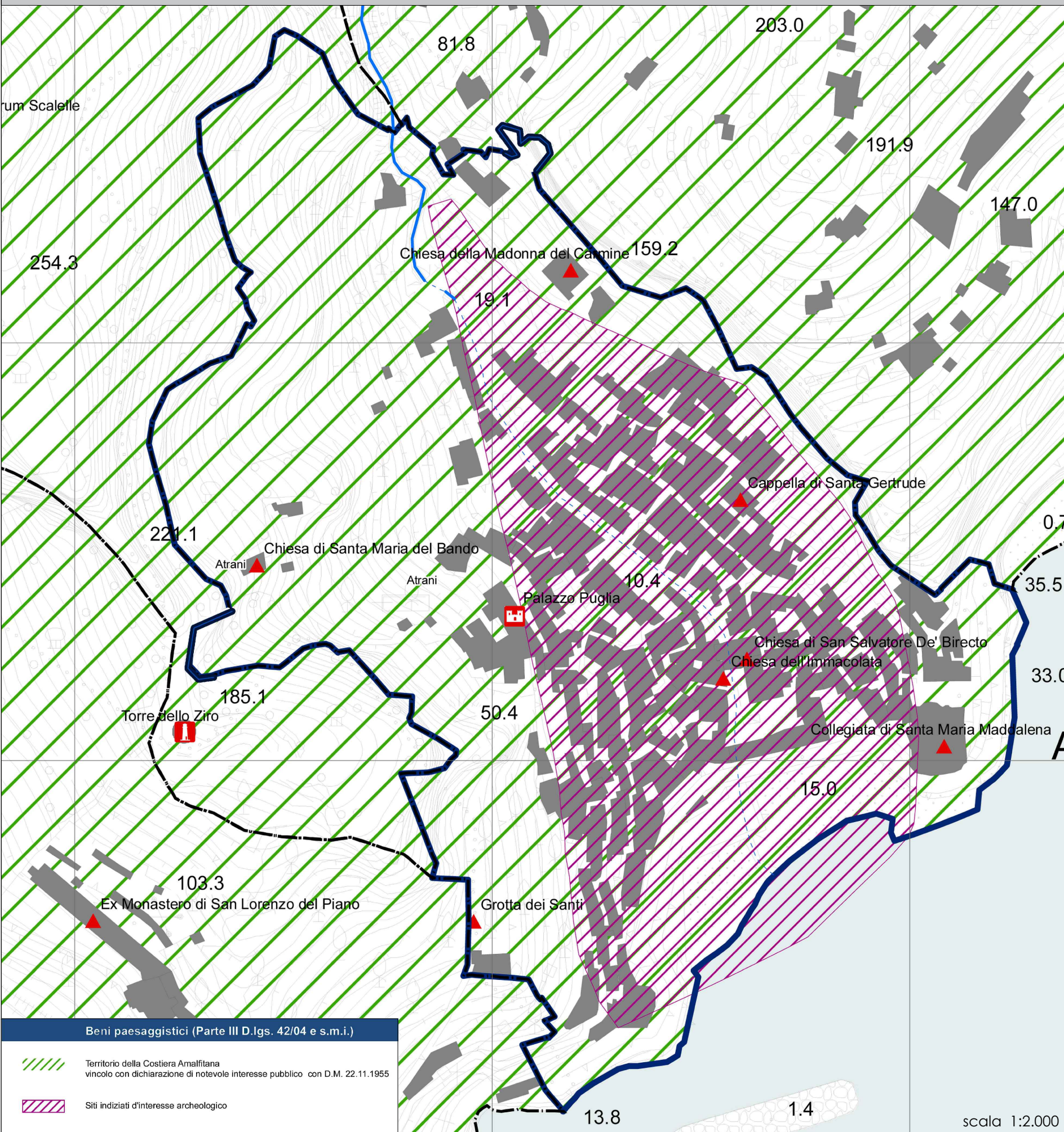
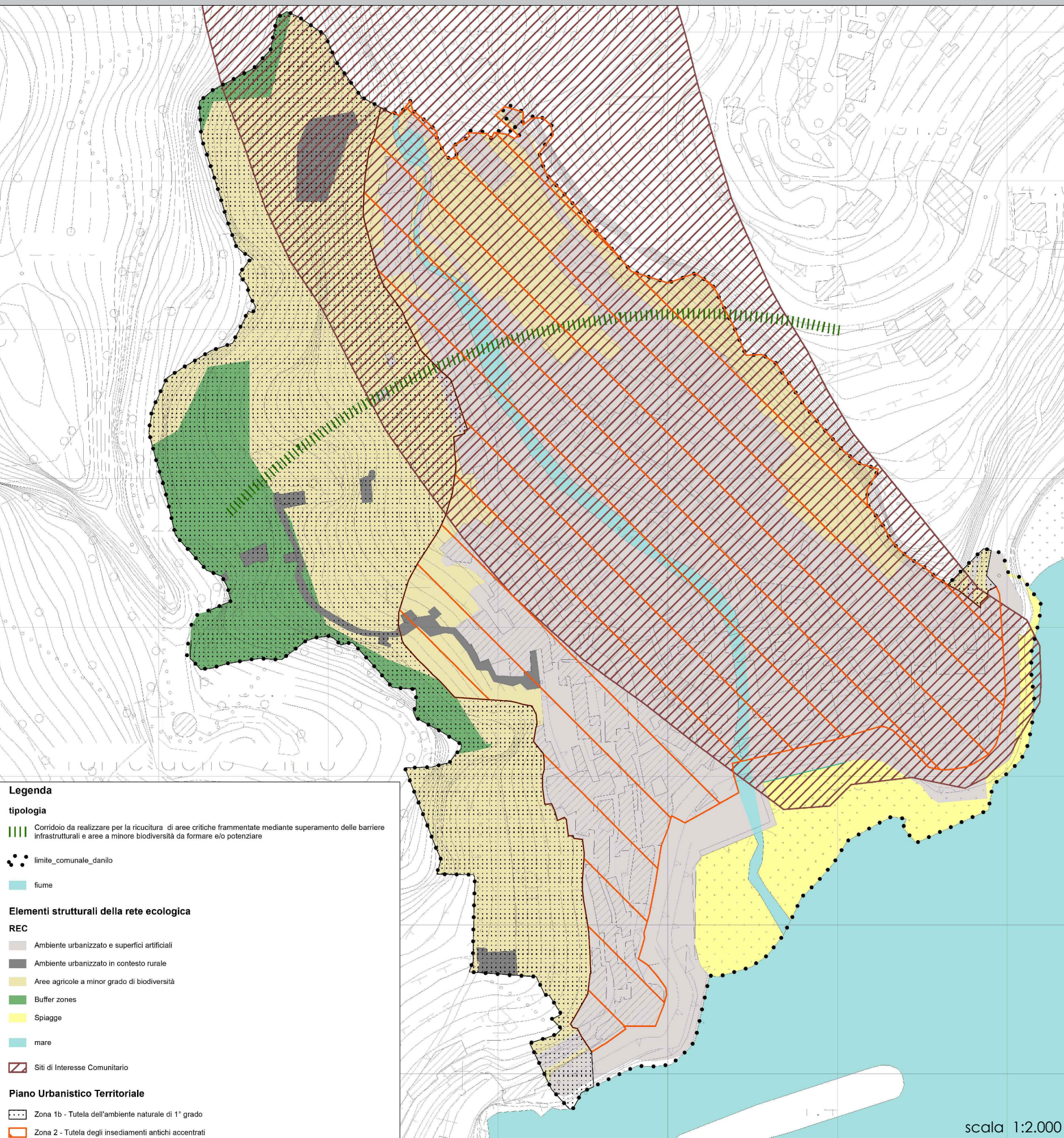


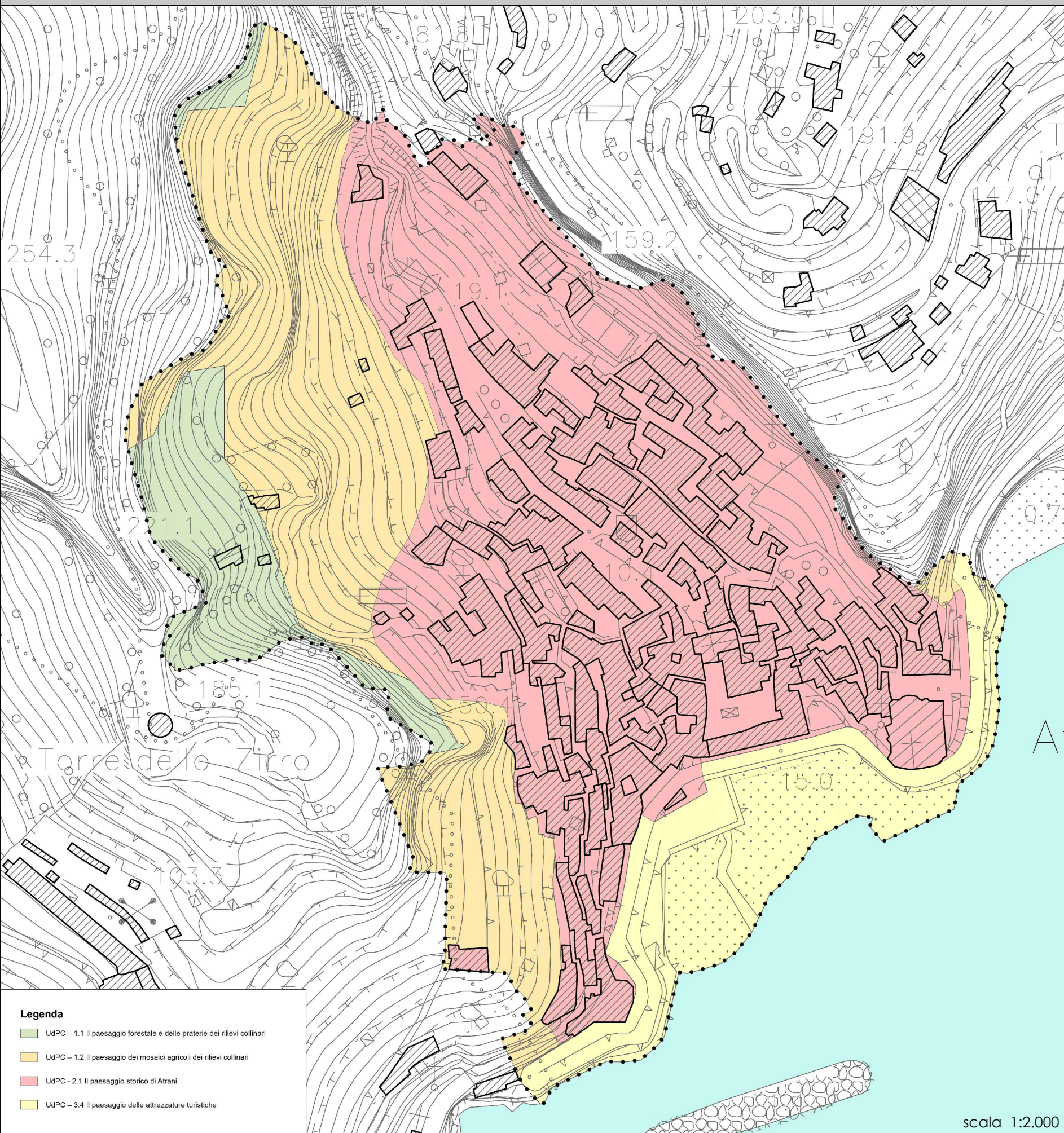
### STRALCIO TAV.1.6.1 - CARTA DEI VINCOLI



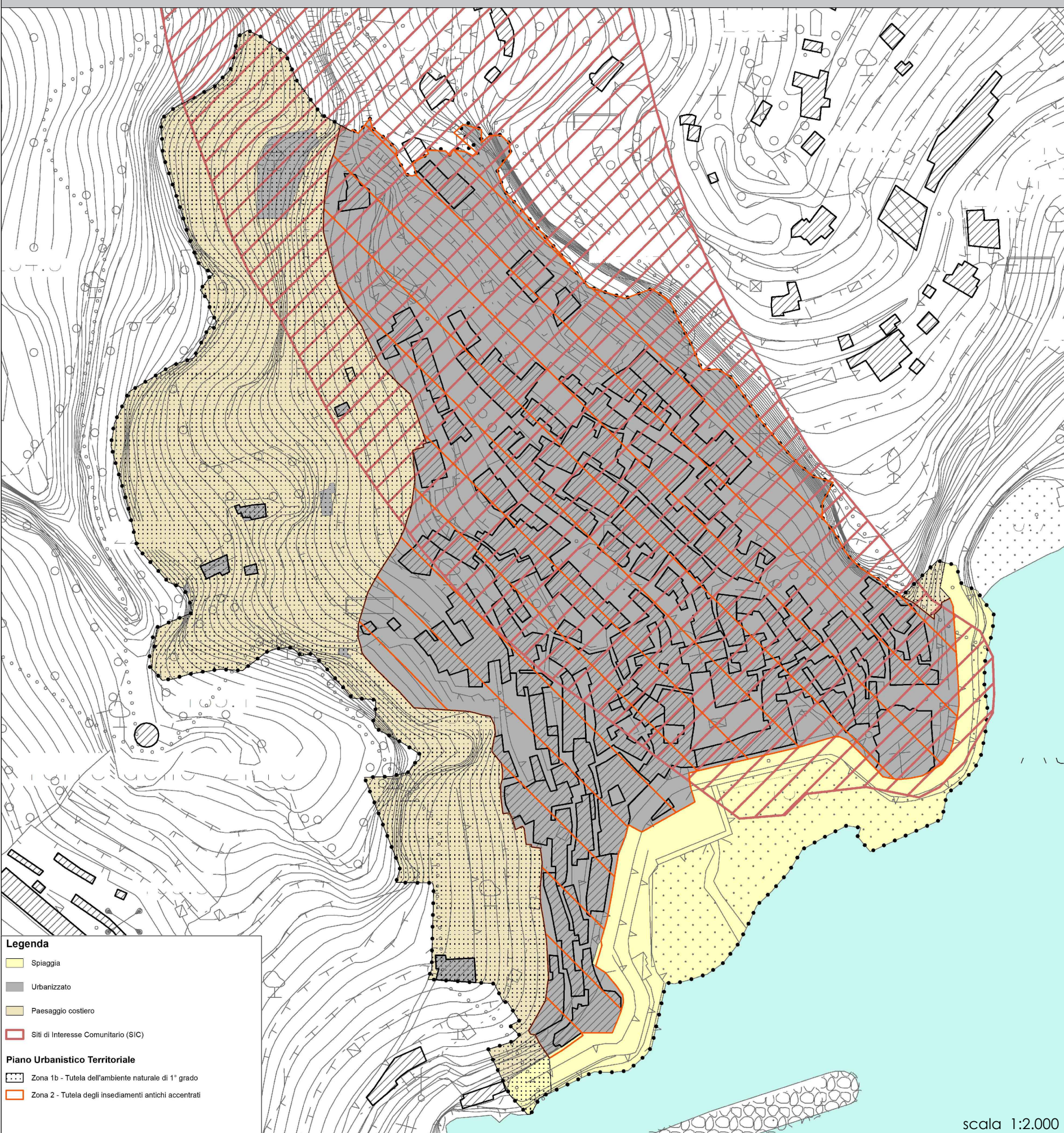
### STRALCIO TAV.2.1 - RETE ECOLOGICA



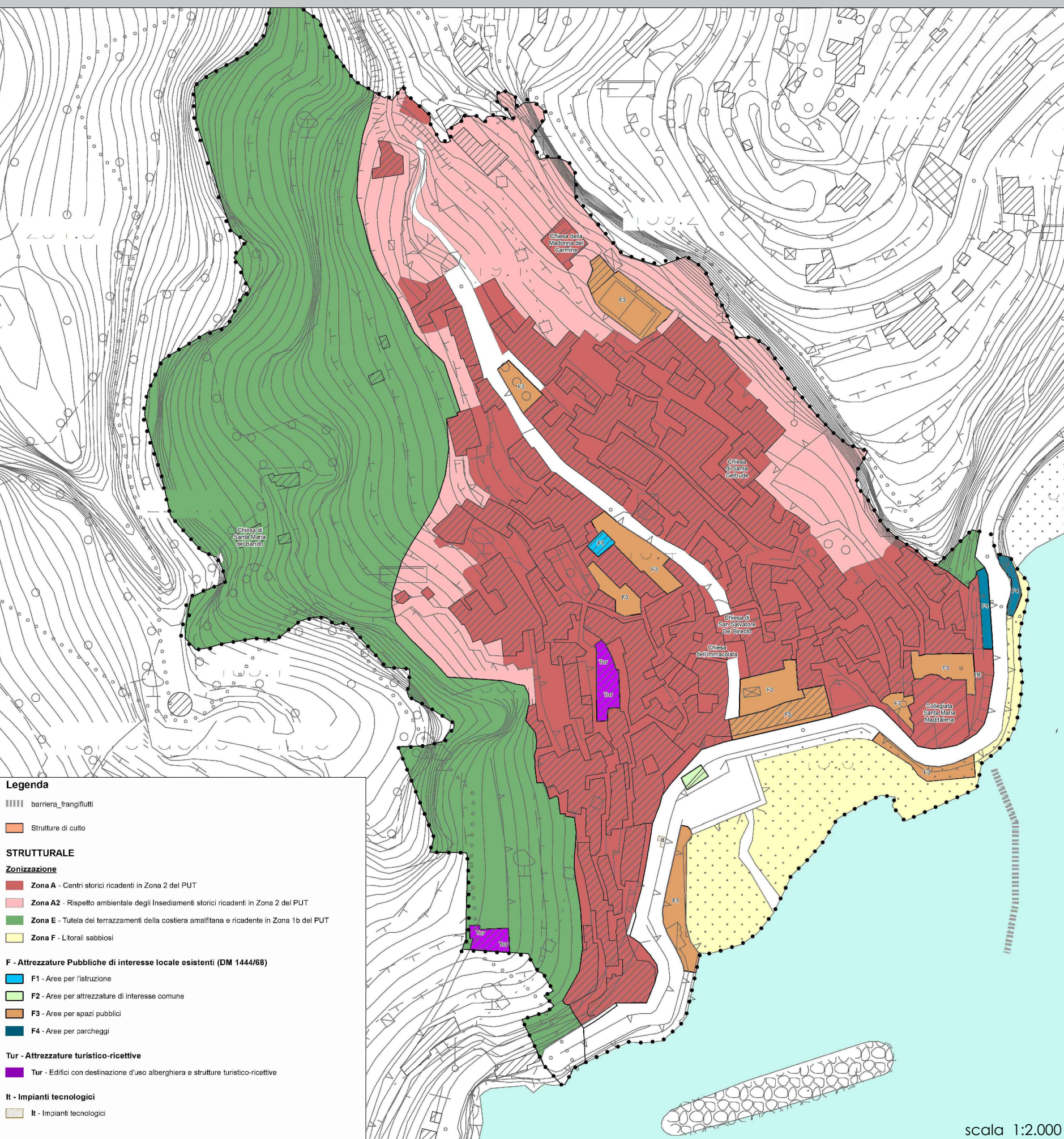
### STRALCIO TAV.2.2 - UNITA' DI PAESAGGIO



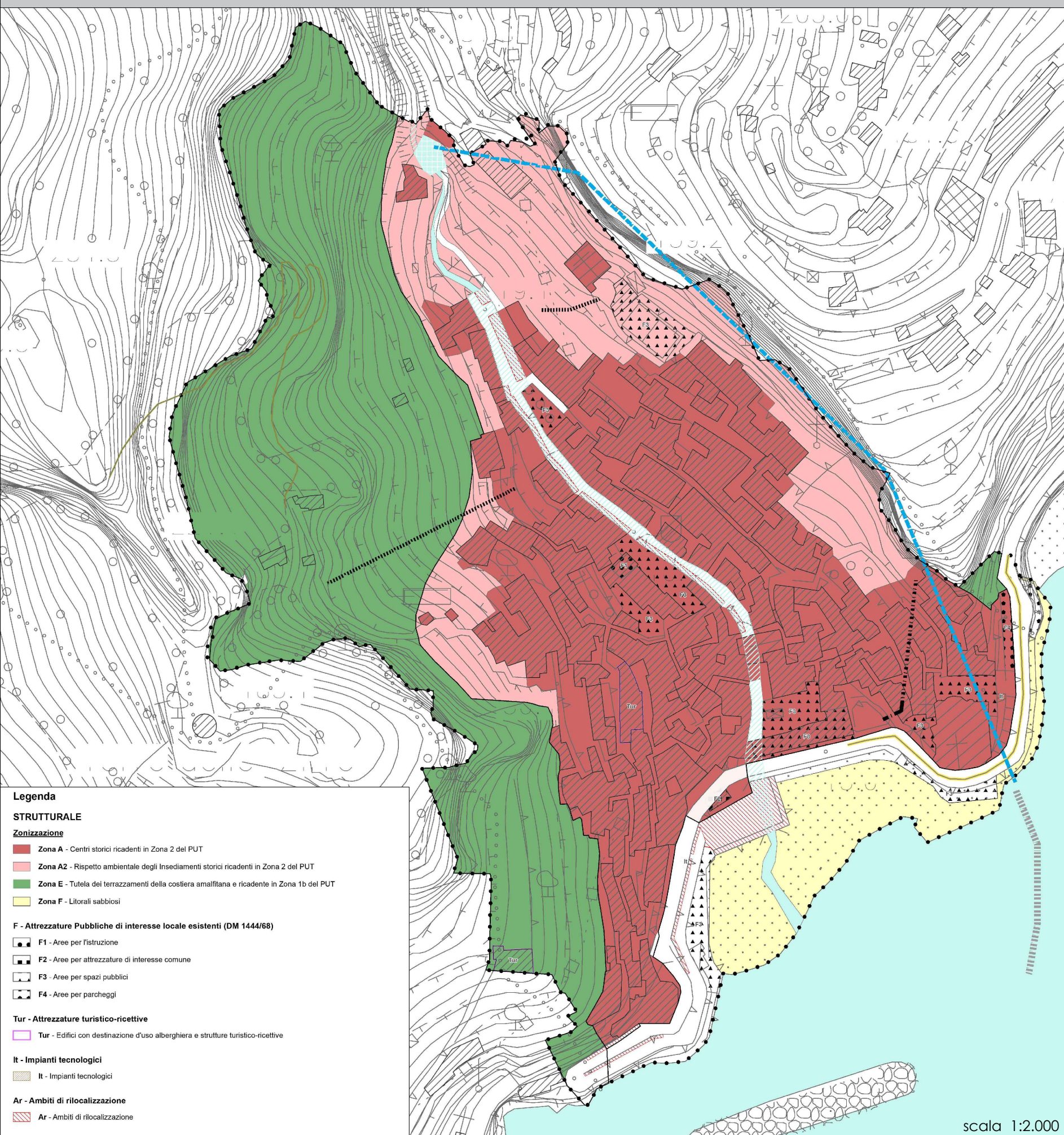
### STRALCIO TAV.2.3 - CARTA INVARIANTI STRUTTURALI



### STRALCIO TAV. 2.4 - DISCIPLINA STRUTTURALE



### STRALCIO TAV.2.5 - CARTA DELLA MOBILITA'



### COMUNE di ATRANI Provincia di Salerno



### PAD Piano Attuativo di utilizzazione delle aree del Demanio marittimo

#### IL SINDACO

Michele Siravo

#### IL RESPONSABILE DELL'UTC E DEL PROCEDIMENTO

Ing Fabrizio Polichetti

#### QUADRANTE



STRALCI PIANO URBANISTICO COMUNALE -PUC

IL PROGETTISTA  
Arch. Domenico  
Gallone

Tav. IT.03