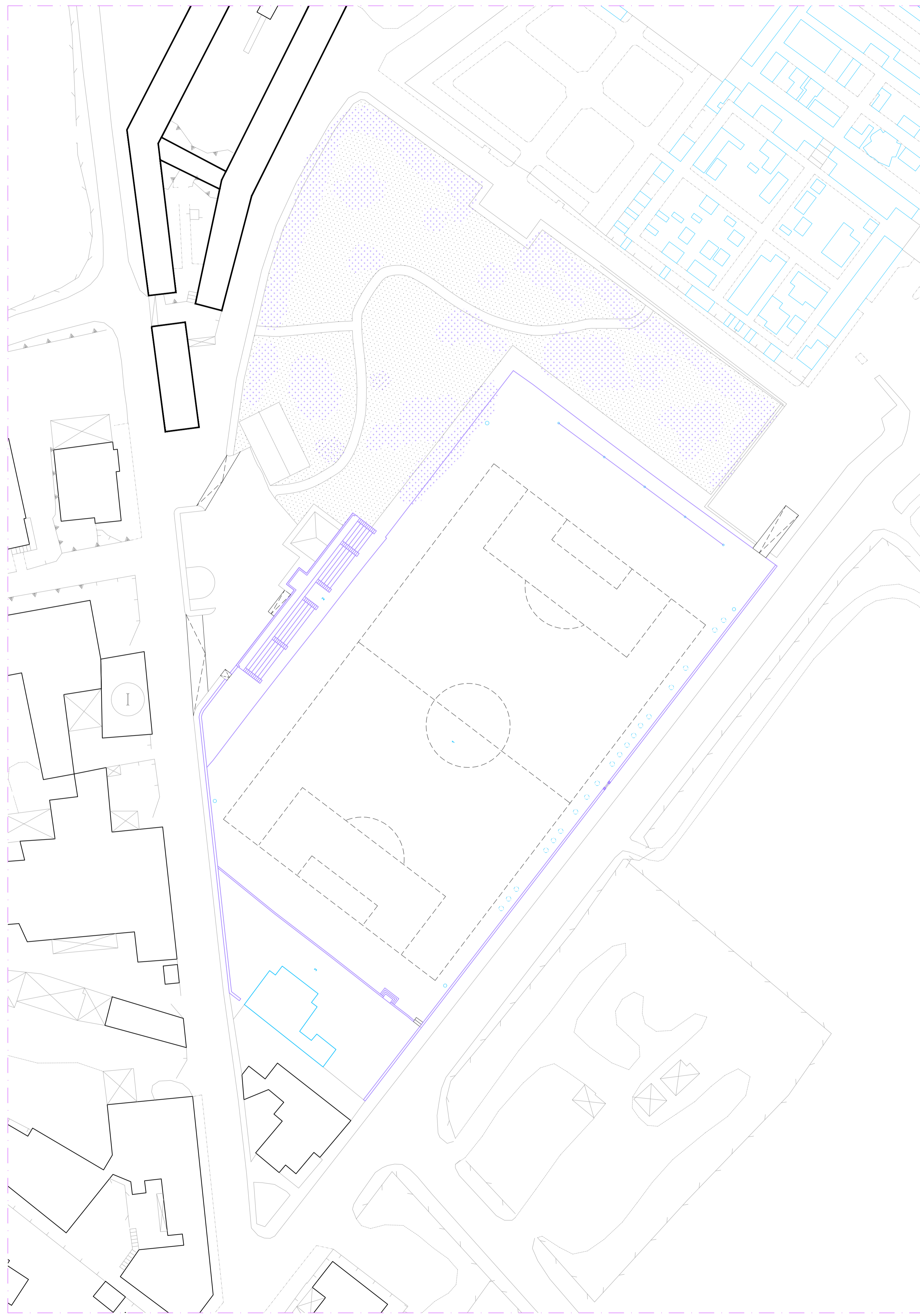
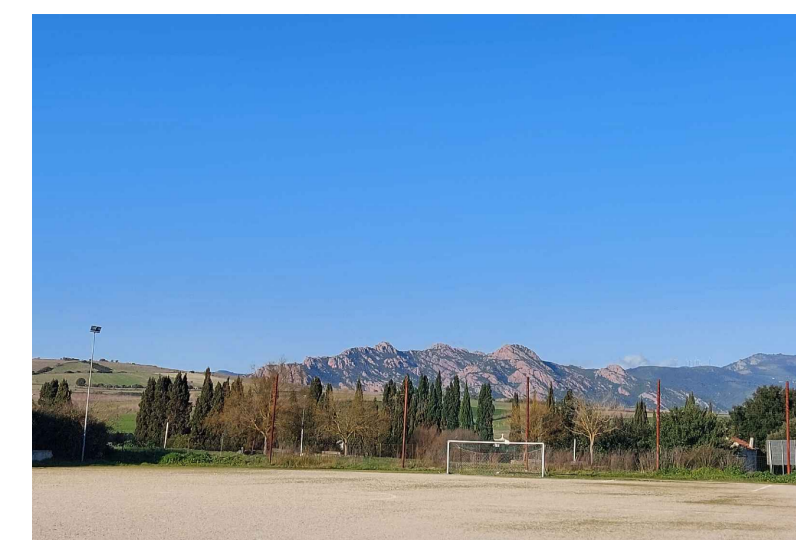
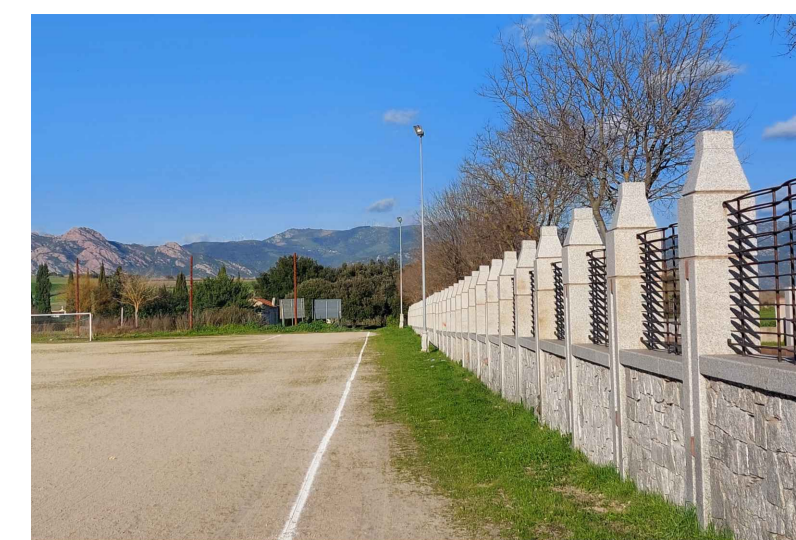


LEGENDA |

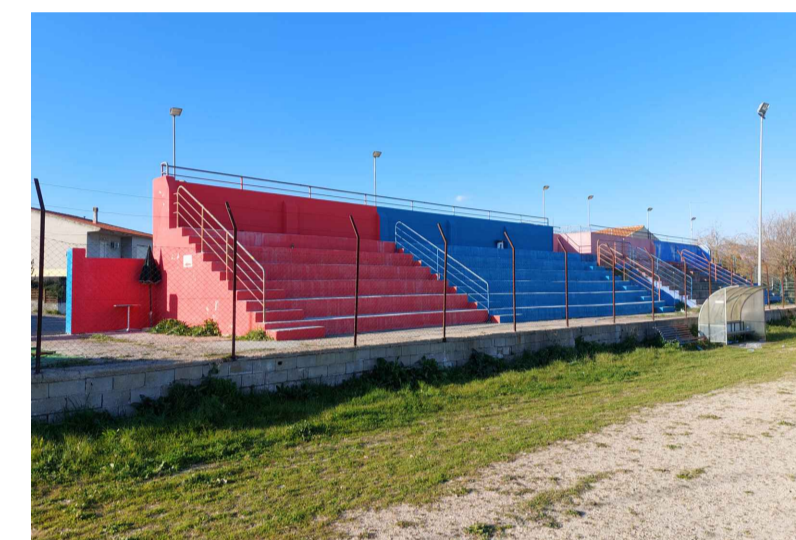
- 1 - Campo da gioco in terra battuta
- 2 - Area tribune
- 3 - Area spogliatoi



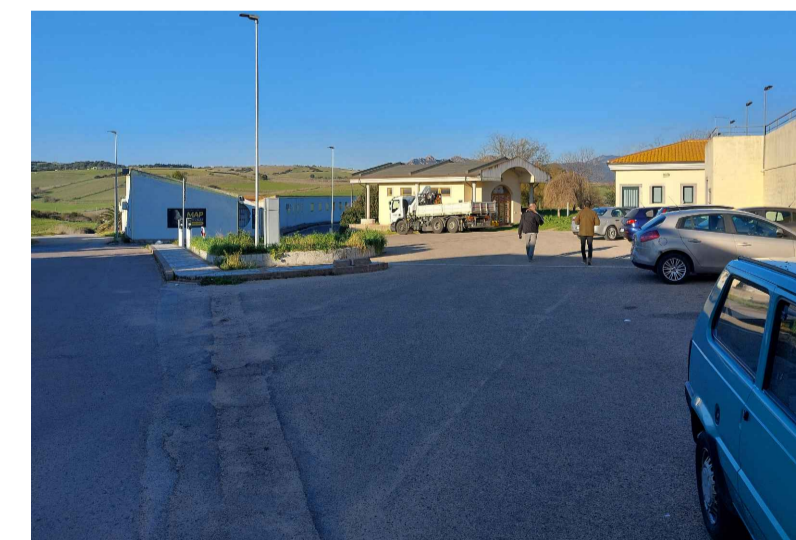
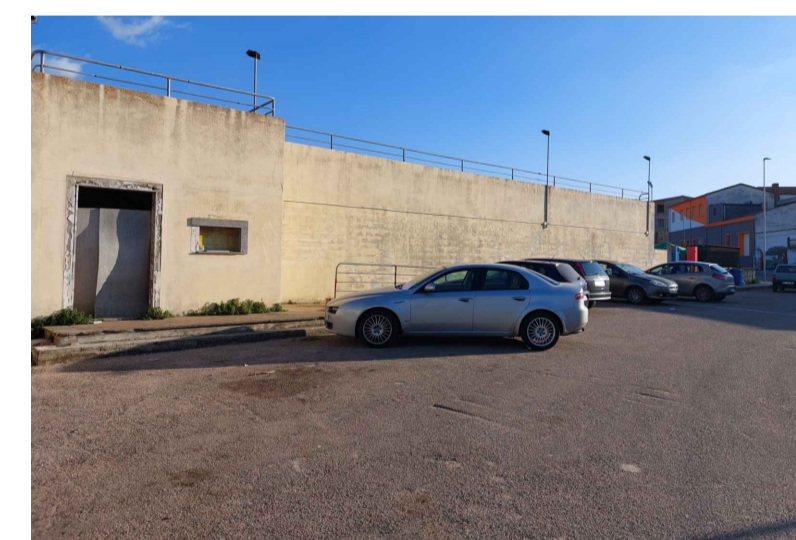
PLANIMETRIA GENERALE | SCALA 1:500



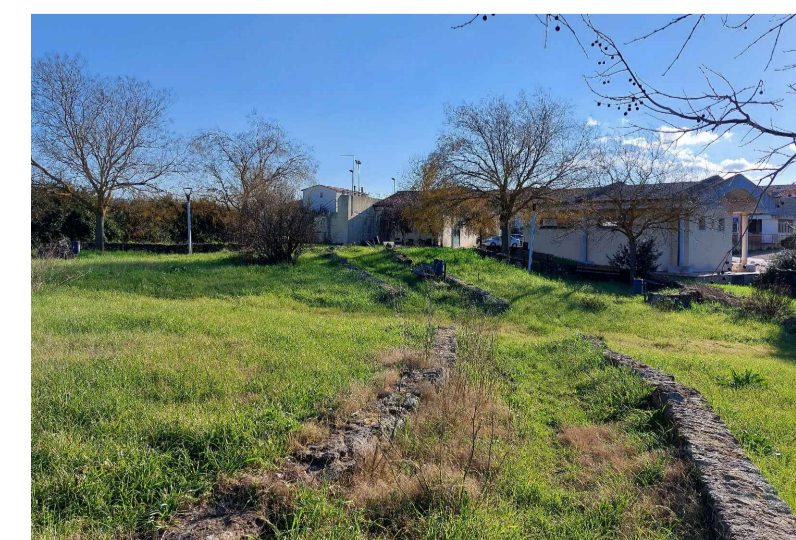
CAMPO DA GIOCO E SPOGLIATOI



TRIBUNA



PARCHEGGI E ACCESSI AL CAMPO



PARCO



COMUNE DI PERFUGAS
PROVINCIA DI SASSARI

**"RIQUALIFICAZIONE AREA CAMPO SPORTIVO
P.FRESU E INGRESSO CENTRO ABITATO"**

CUP: G91G22000340002



PROGETTO ESECUTIVO

<small>allegato</small>	<small>elaborato</small>	<small>archiv.</small>
ESEC - 2.2	STATO DI FATTO - PLANIMETRIA GENERALE	11_24
<small>scala</small>	<small>data</small>	
-	Feb - 26	

<small>Il progettista</small>	<small>Il Responsabile del Procedimento</small>
Ufficio tecnico comunale di Perfugas	
Arch. Giancarlo Marco SANTORO	Geom. Francesco MANUNTA