
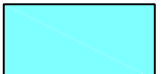






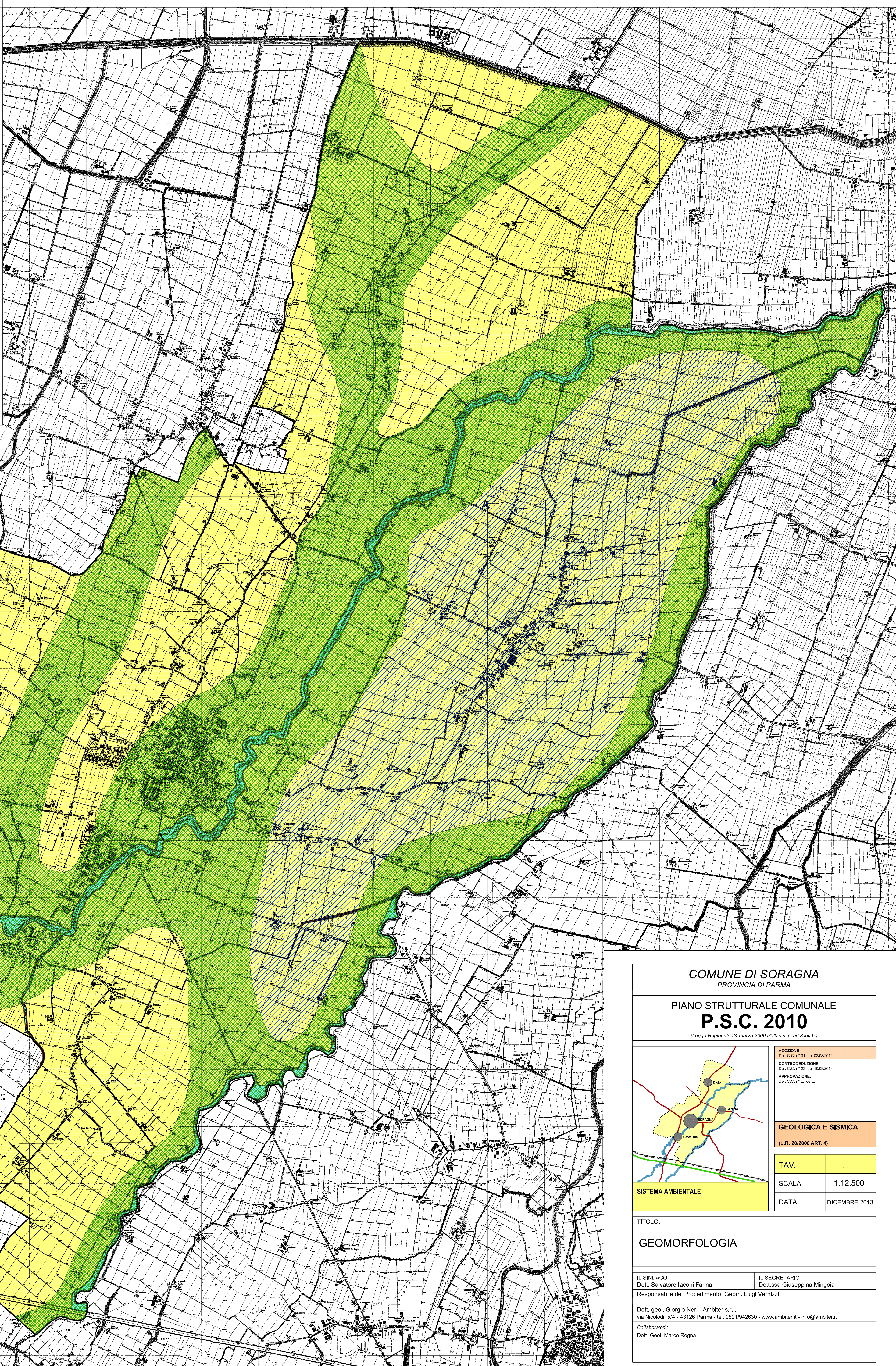


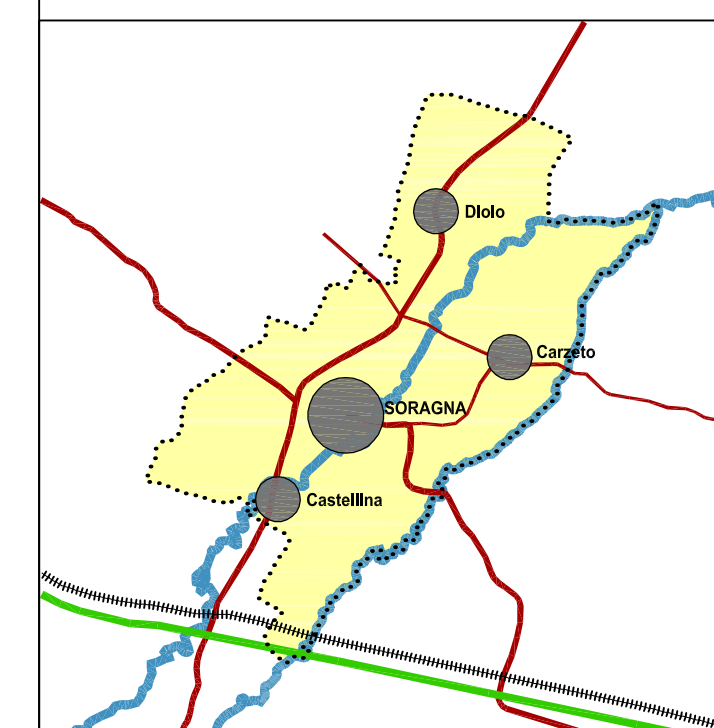
-  Zone perfluviali
-  Zone golenali
-  Dossi fluviali
-  Rete idrografica
-  Traversa del T. Strone
-  Zone a drenaggio difficoltoso
-  Argini
-  Confine comunale



COMUNE DI SORAGNA
PROVINCIA DI PARMA

PIANO STRUTTURALE COMUNALE
P.S.C. 2010

(Legge Regionale 24 marzo 2000 n°20 e s.m. art.3 lett.b)



ADOZIONE:
Del. C.C. n° 21 del 02/08/2012

CONTRODEDUZIONE:
Del. C.C. n° 23 del 10/09/2013

APPROVAZIONE:
Del. C.C. n° ... del ...

GEOLOGICA E SISMICA
(L.R. 20/2000 ART. 4)

TAV.	
SCALA	1:12.500
DATA	DICEMBRE 2013

SISTEMA AMBIENTALE

TITOLO:
GEOMORFOLOGIA

IL SINDACO:
Dott. Salvatore Iaconi Farina

IL SEGRETARIO:
Dott.ssa Giuseppina Mingola

Responsabile del Procedimento: Geom. Luigi Vernizzi

Dott. geol. Giorgio Neri - Ambiter s.r.l.
via Nicolodi, 5/A - 43126 Parma - tel. 0521/942630 - www.ambiter.it - info@ambiter.it

Collaboratori:
Dott. Geol. Marco Rognà