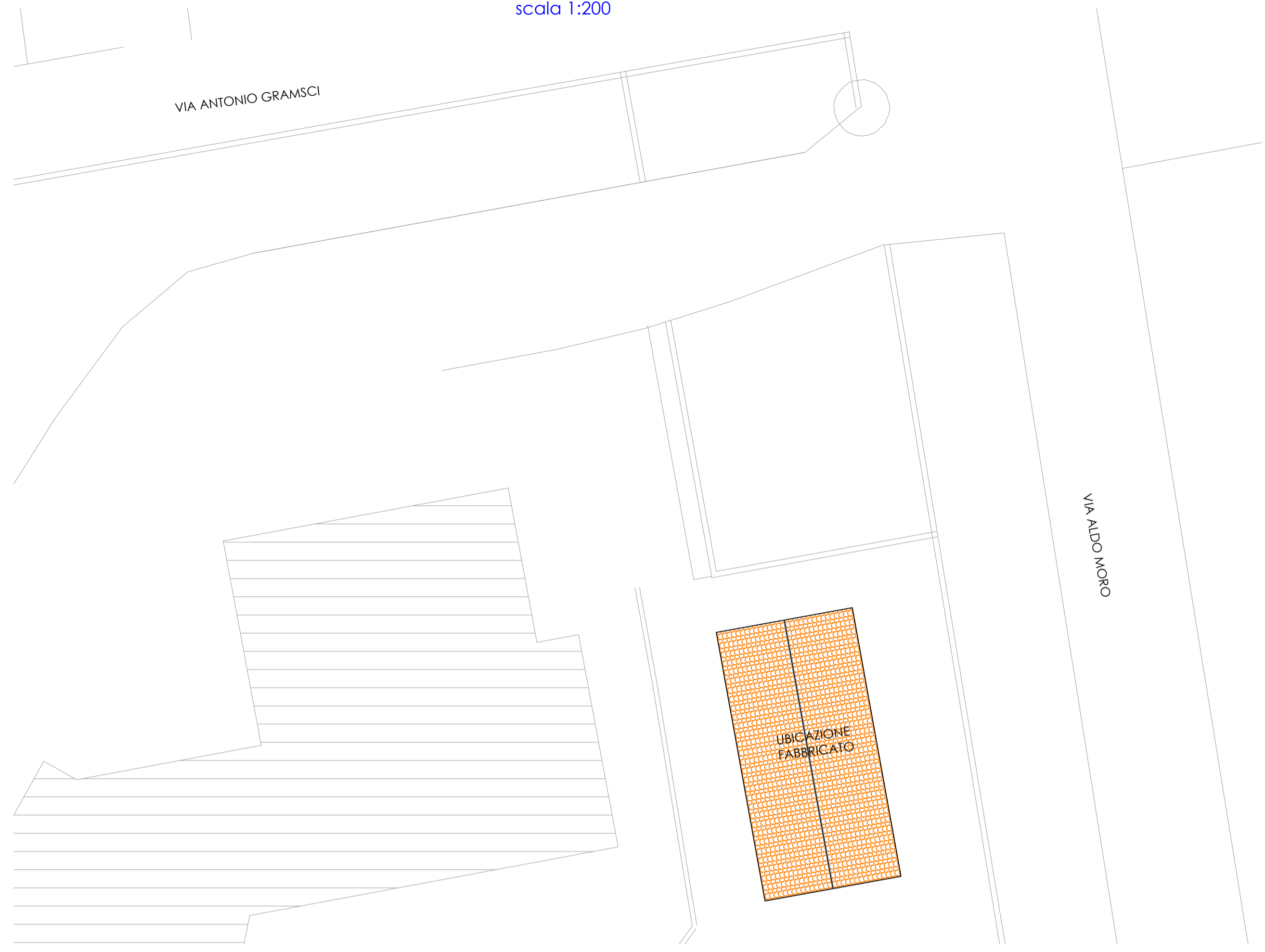
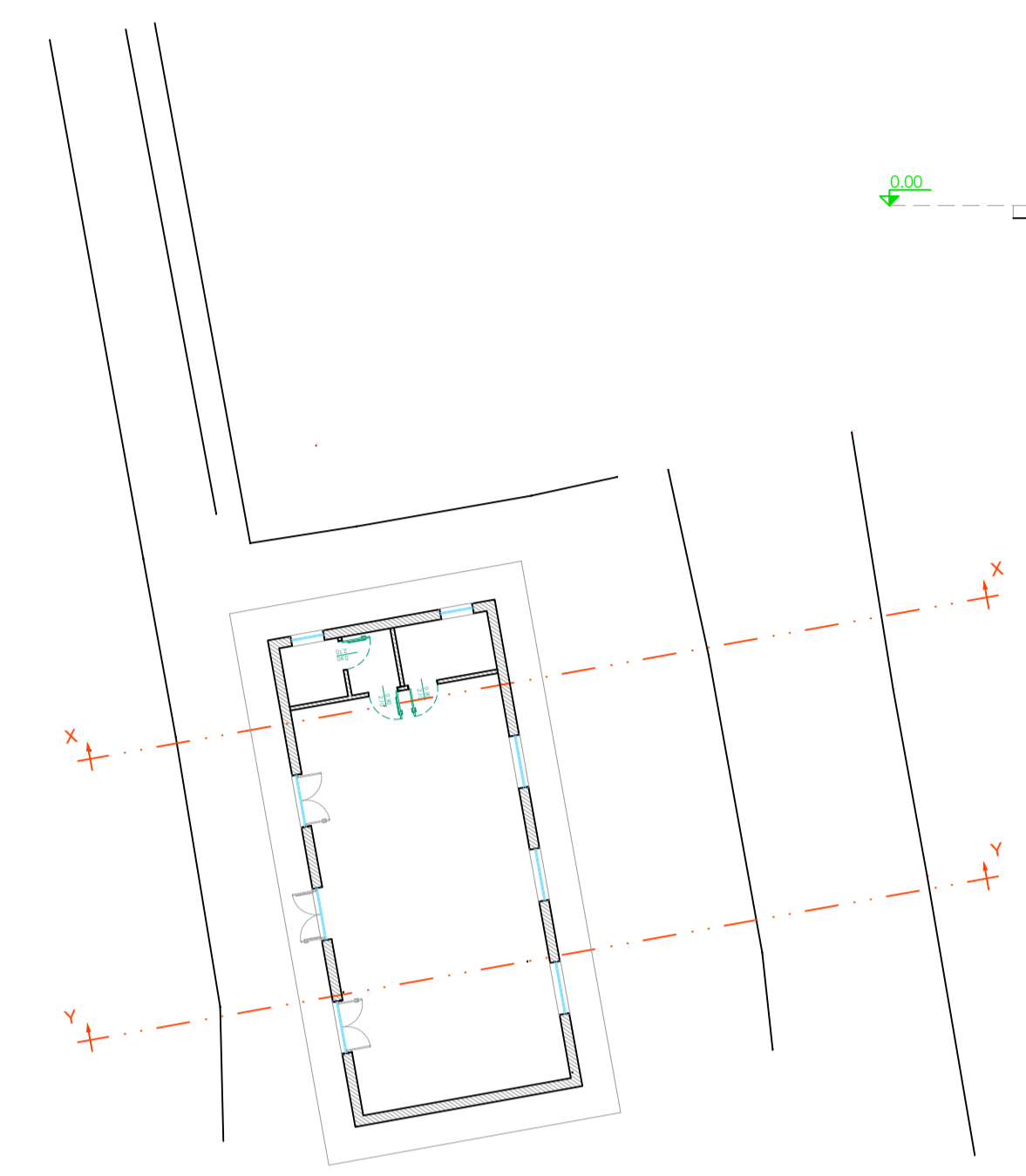


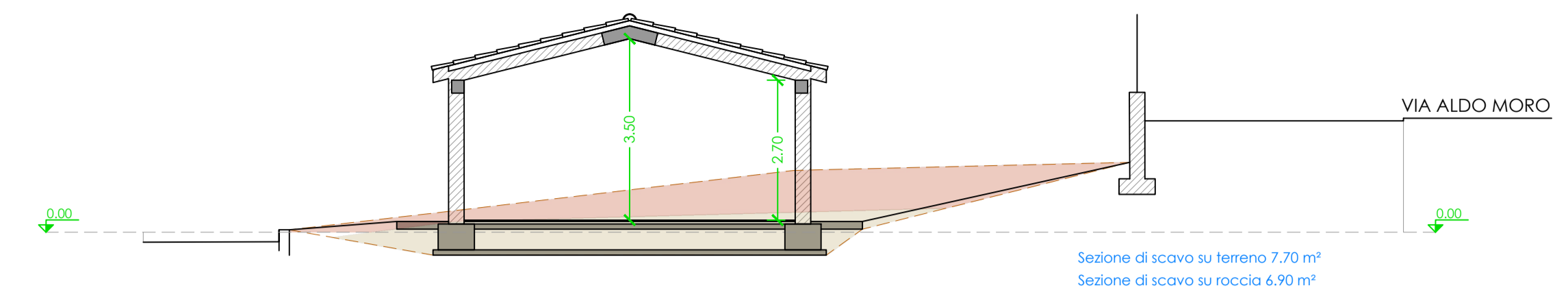
PLANIMETRIA GENERALE
scala 1:200



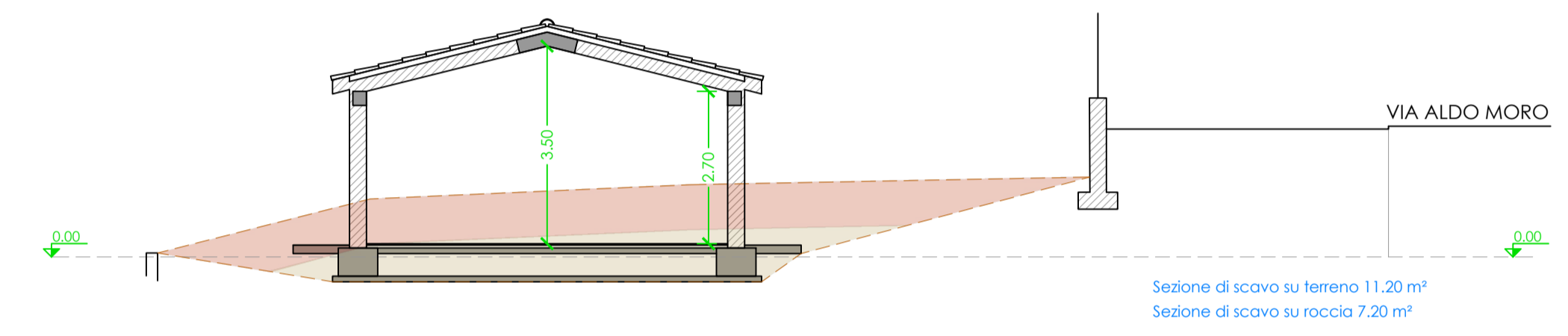
RILIEVO PLANOALTIMETRICO
scala 1:200



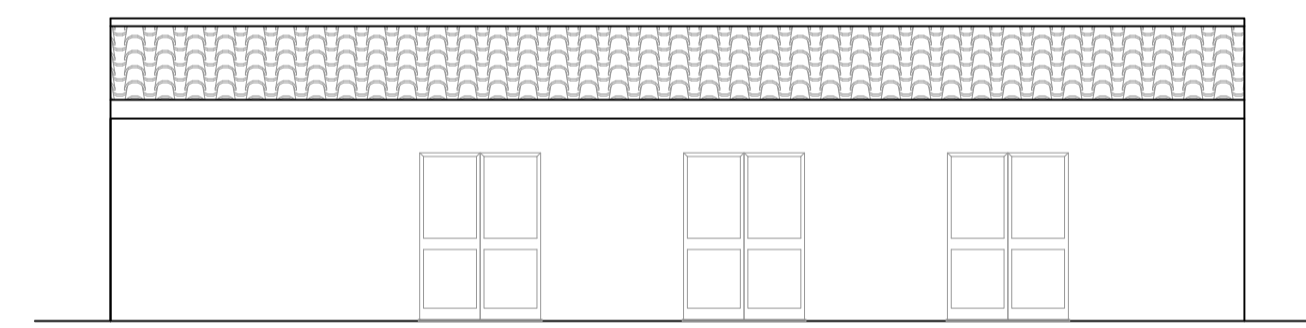
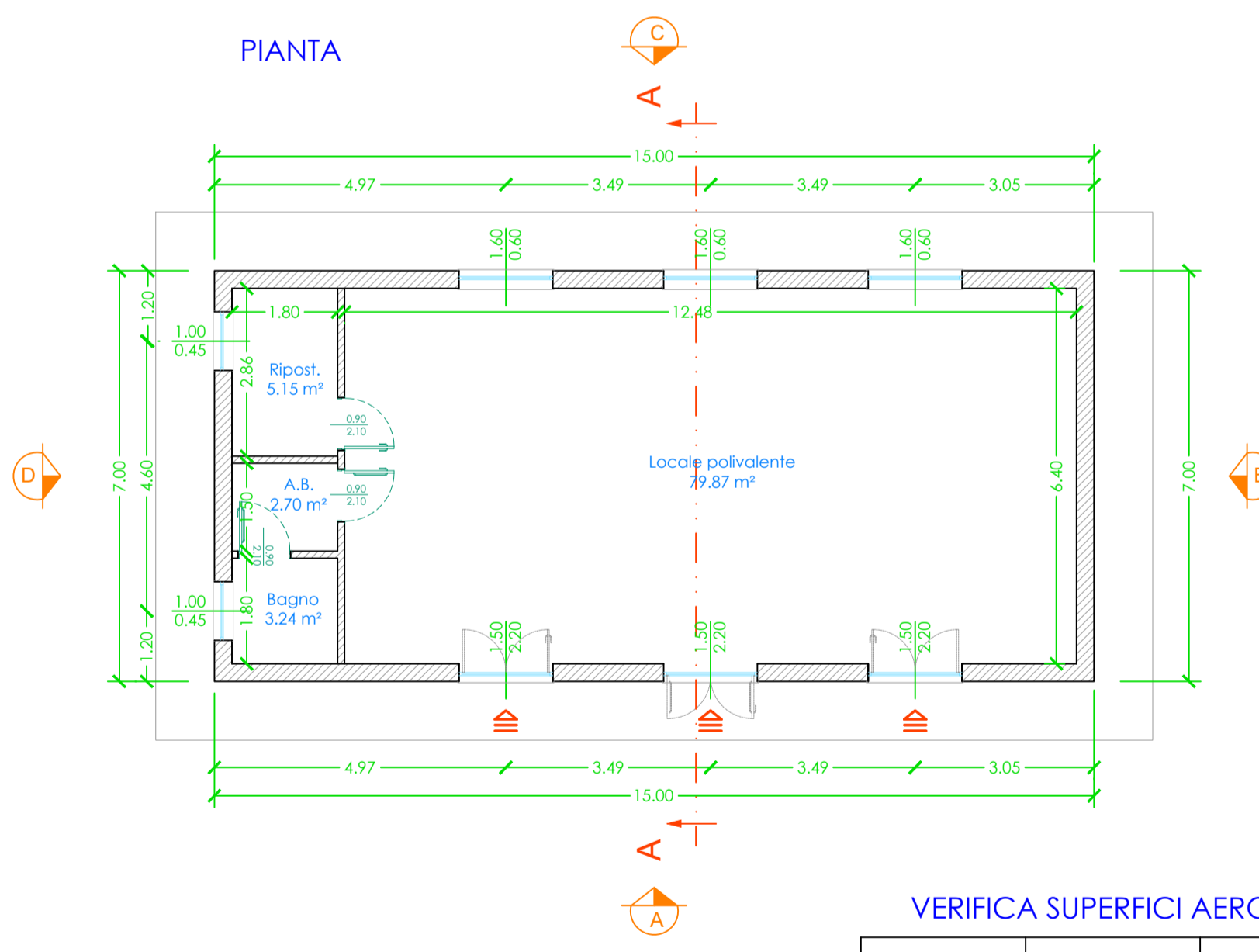
SEZIONE X - X
(in progetto)



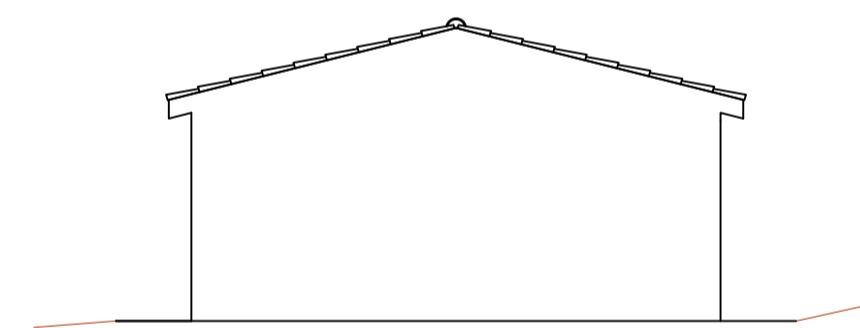
SEZIONE Y - Y
(in progetto)



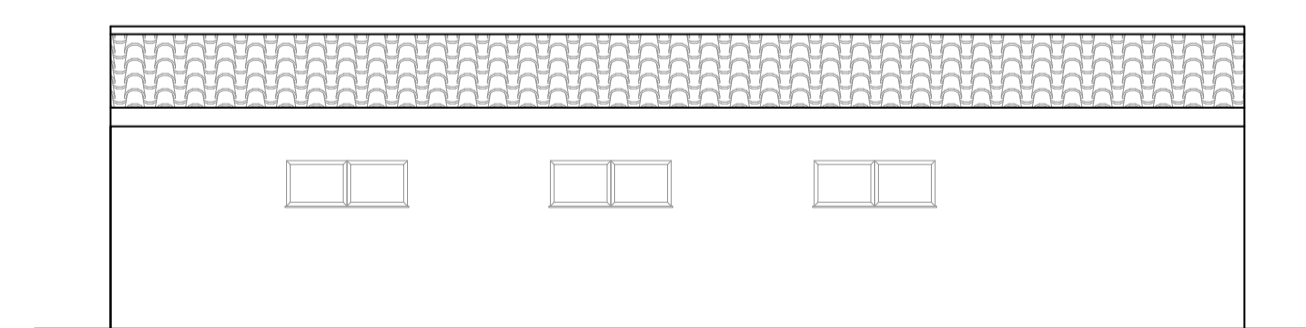
PIANTA



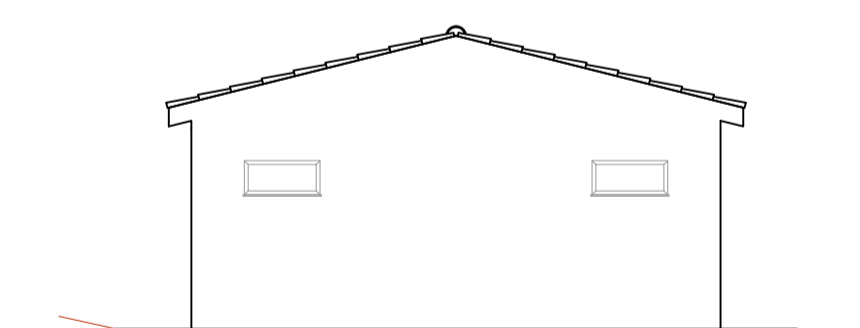
VISTA A



VISTA B



VISTA C

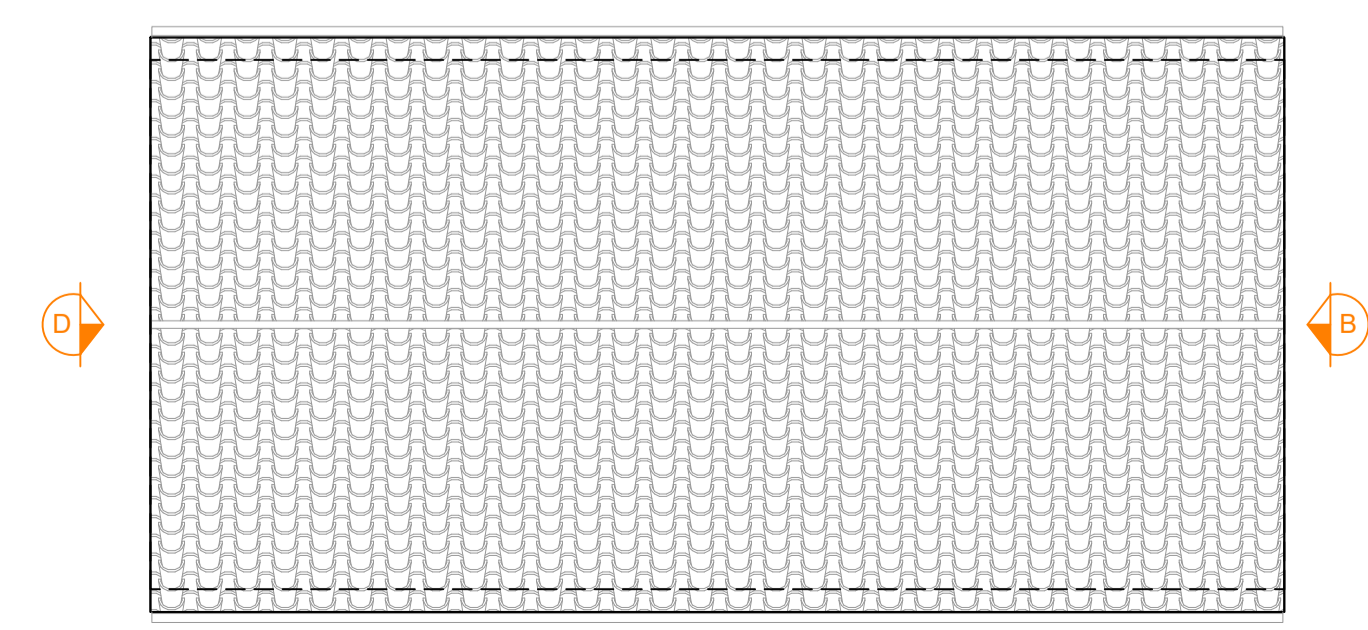


VISTA D

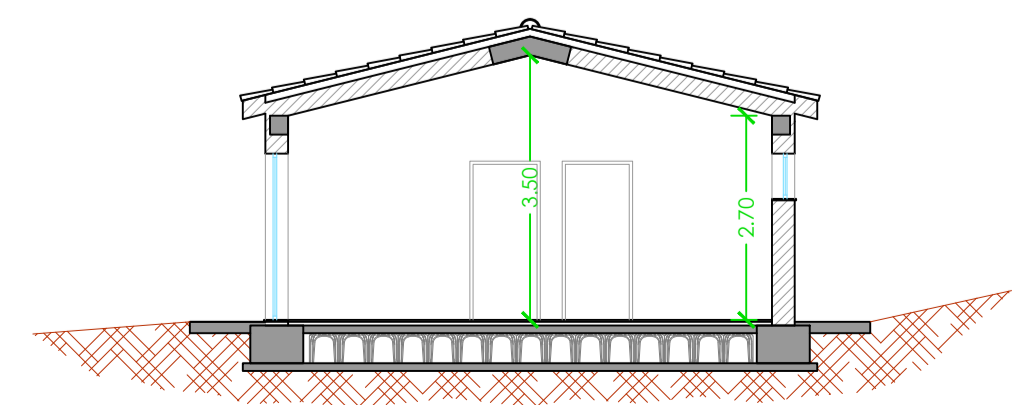
VERIFICA SUPERFICI AEROILLUMINANTI

AMBIENTE	SUPERFICIE UTILE AMBIENTE	SUPERFICIE FINESTRATA	SUPERFICIE MINIMA NECESSARIA
PIANO TERRA			
Locale Polivalente	79.87 m ²	12.78	> 9.98
Bagno	3.24 m ²	0.45	> 0.40

PIANTA COPERTURA

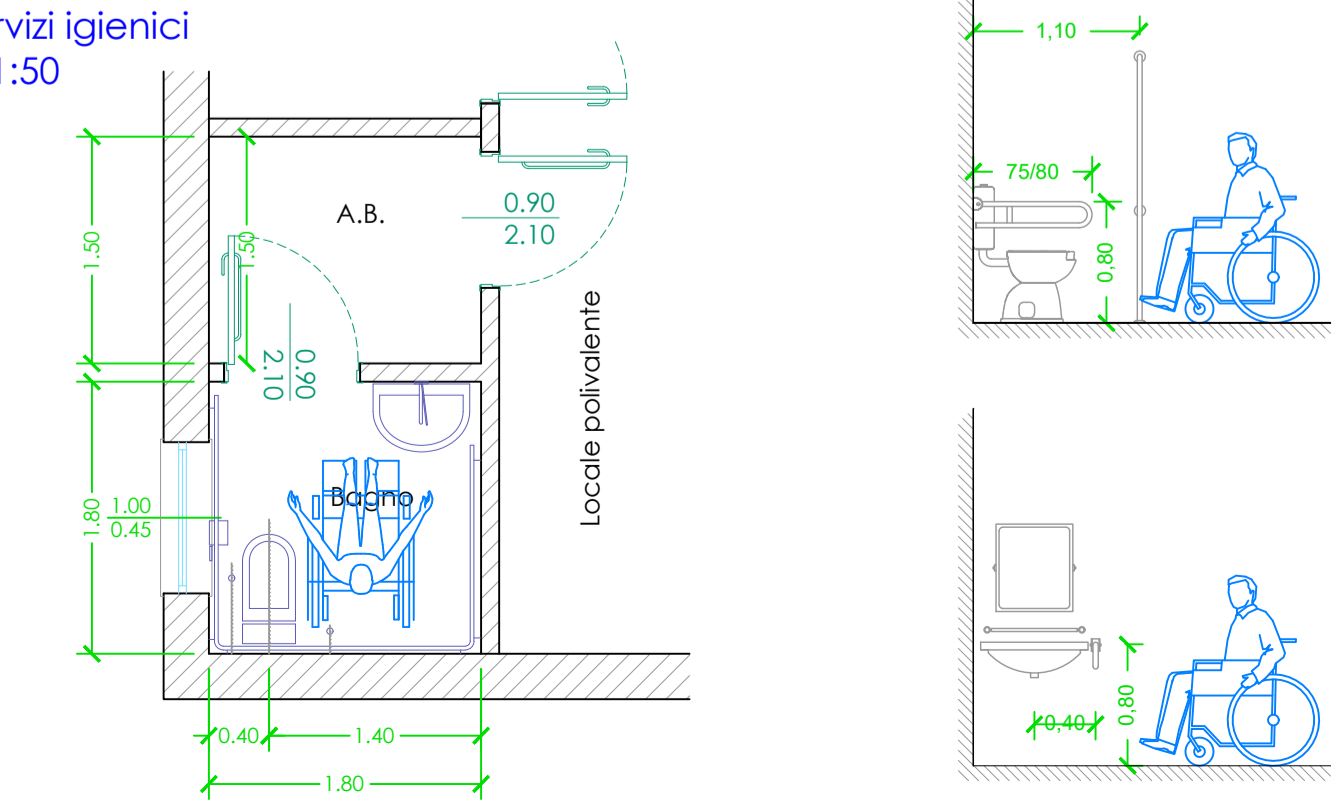


SEZIONE A-A



DIMOSTRAZIONE ACCESSIBILITA' DA

Particolare servizi igienici
scala 1:50



REALIZZAZIONE DI UN FABBRICATO AD USO
POLIFUNZIONALE E SOCIO CULTURALE
CUP: E35E25000280002
PROGETTO DI FATTIBILITÀ TECNICO ECONOMICA

Elaborato grafico | Scala: 1:100
16 Planimetria, piante, sezioni e prospetti in progetto

Il Progettista:
Dott. Ing. Stefano Mascia

Il RUP:
Geom. Simone Carboni

Il Sindaco: Gian Luca Pittoni

RIPRODUZIONE VIETATA A TERMINI DI LEGGE SENZA PREVENTIVA AUTORIZZAZIONE

REV	DESCRIZIONE	DATA	NOME FILE e CODICE
03			
02			
01	Emissione	19/12/2025	16_PFE_19122025_TAV_3.1_Planimetria, piante, sezioni e prospetti in progetto