



TRIVIA ANIMALIS

CUMINTZU

SU MERI



LUCA CAEDDU

CUMENTI SI GIOGAT

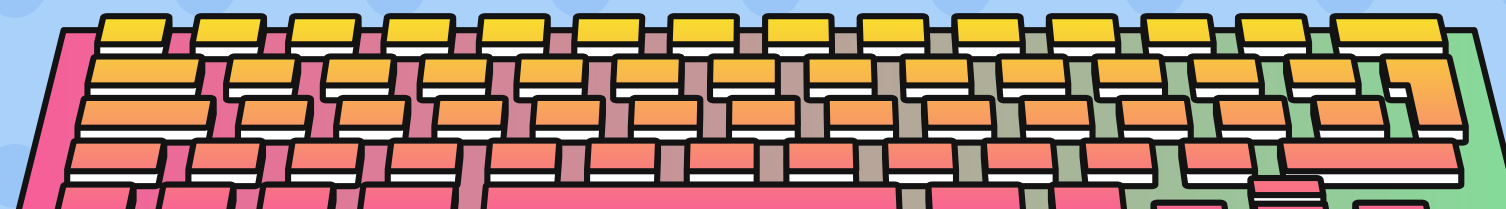
- *Deu, su meri e su presentadori de custu giogu chi at a durai prus o mancu 30 minutus, s' apu a pratziri in 8 trumas de 8 pipius.*
- *Ddoi ant a essi preguntas apitzus de is animalis ma non si dopeis apentzamentai poita ant a essi fàcilis fàcilis.*
- *Deu fatzu is preguntas e dònna truma at a scriri s'arrespusta in d'unu paperi.*
- *A s'acabu de su giogu s'ant a contai is puntus e s'at a biri sa truma bincidora!!*

CATEGORIAS

ANIMALIS DE DOMU

ANIMALIS DE S'ARGIOLA

ANIMALIS ARESTIS





VALORIS DE IS PUNTUS

ANIMALIS DE DOMU= 1

ANIMALIS DE S'ARGIOLA= 2

ANIMALIS ARESTIS= 2,5



8 TRUMAS

- *PISITUS*
- *CANIS*
- *MARXANIS*
- *CONILLUS*
- *PUDDAS*
- *APIOCUS*
- *PORCUS*
- *BRABEIS*

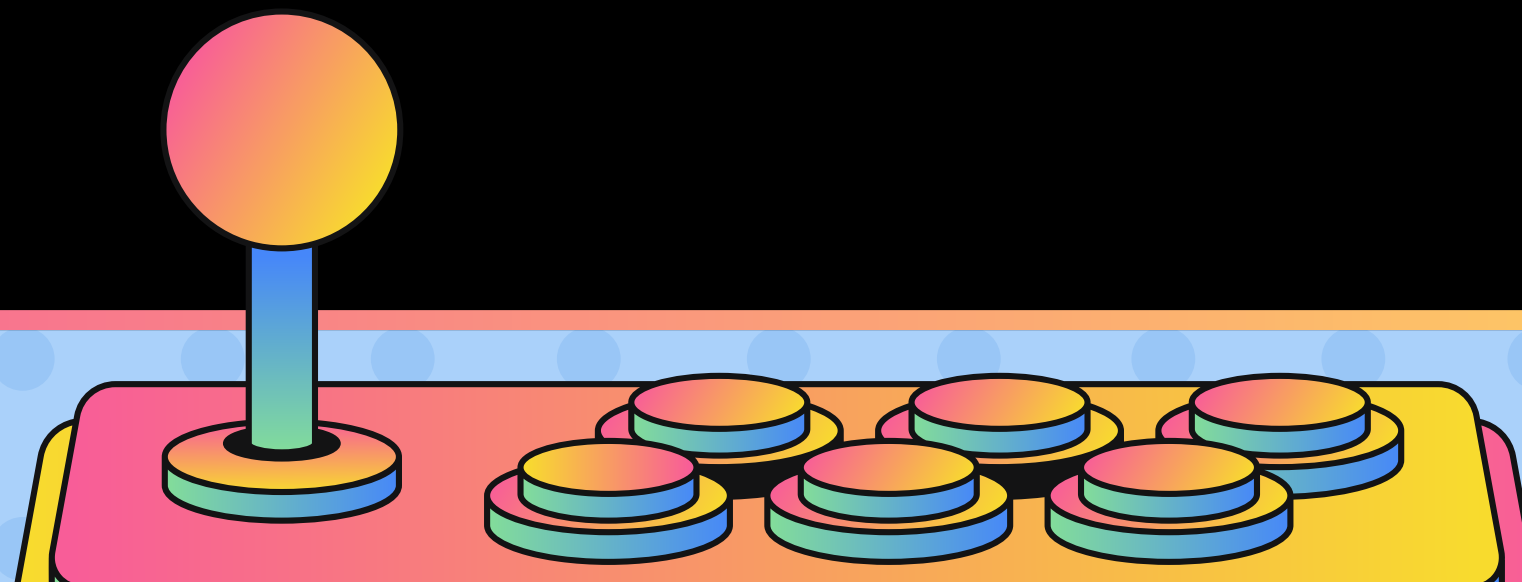
**PRONTUS
SEIS?**

GIOGAUS!!

**BONU GIOGU
, E ARREGODAI-SÌ CA
"PARTECIPAI EST SA
COSA DE IMPORTU!"**

ANIMALIS DE DOMU

***Cali est su mellus amigu de
s'òmini?***

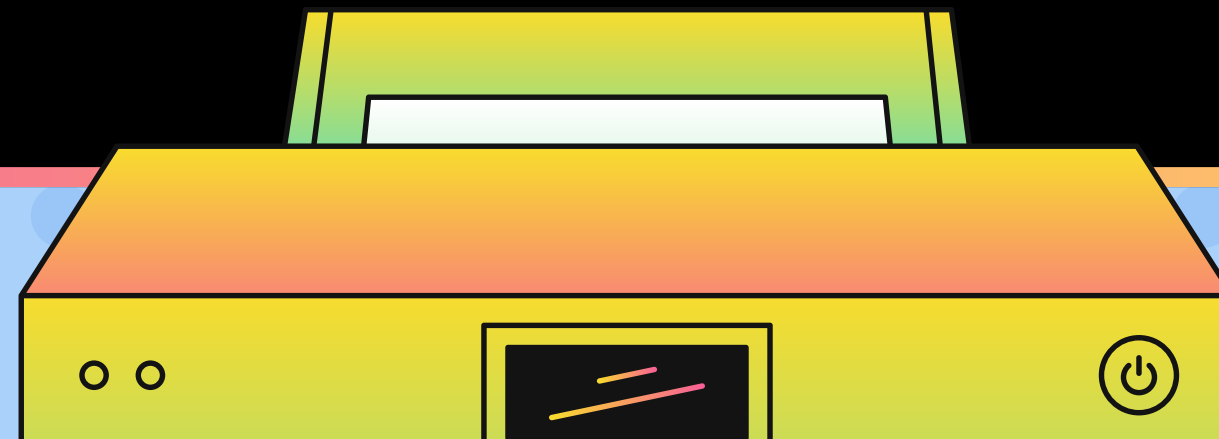


ARRESPUSTA

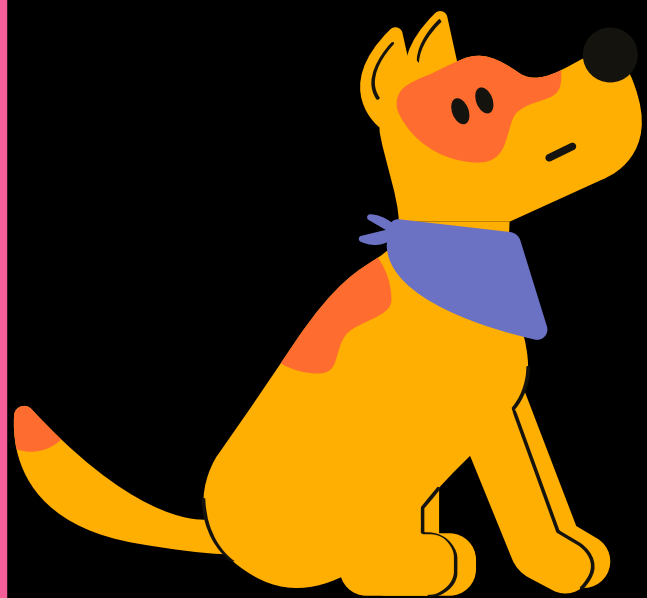
1- SU PROCU

2- SU CANI

3- SU PISITU



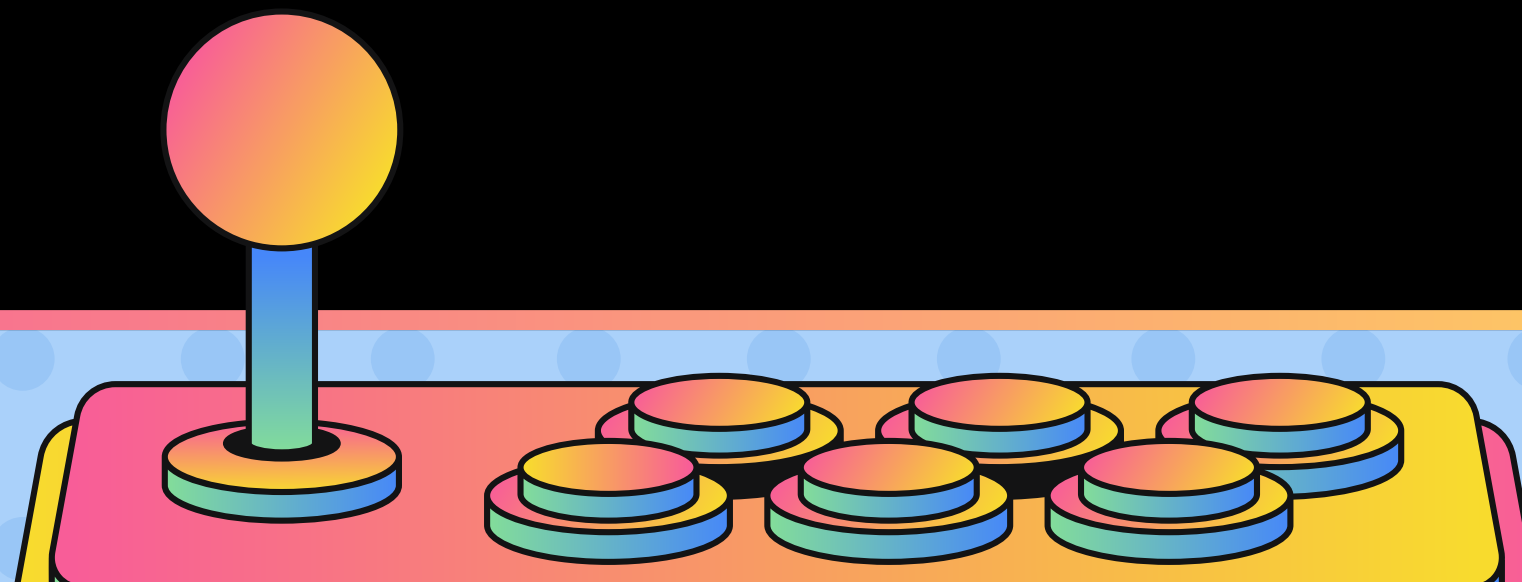
S'arrespusta giusta est:



2 - SU CANI

ANIMALIS DE DOMU

*Cali est s'animali chi cassat is
topis?*

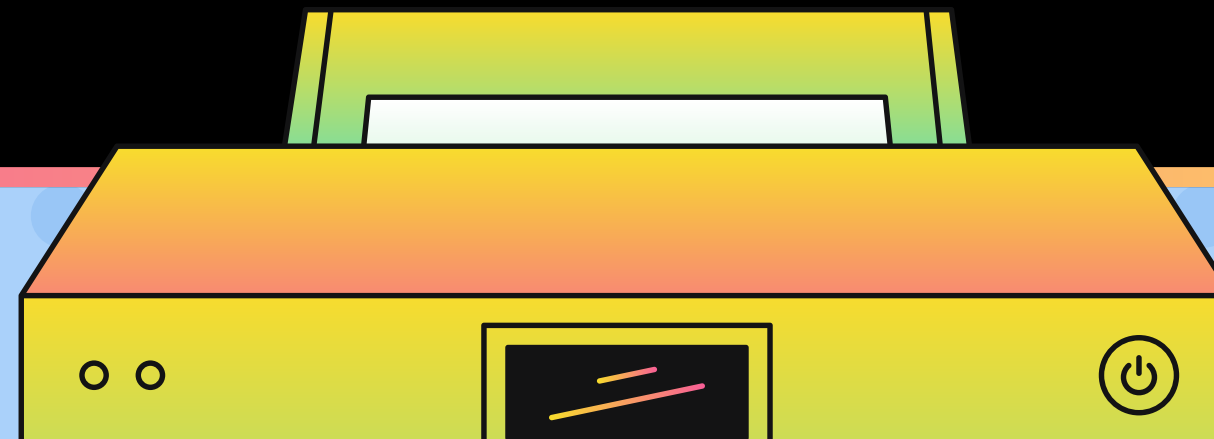


ARRESPUSTA

1- SU PISITU

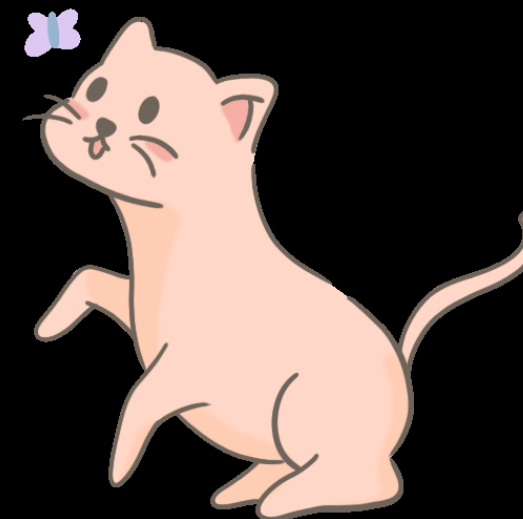
2- SU PROCU

3- S'ELEFANTI



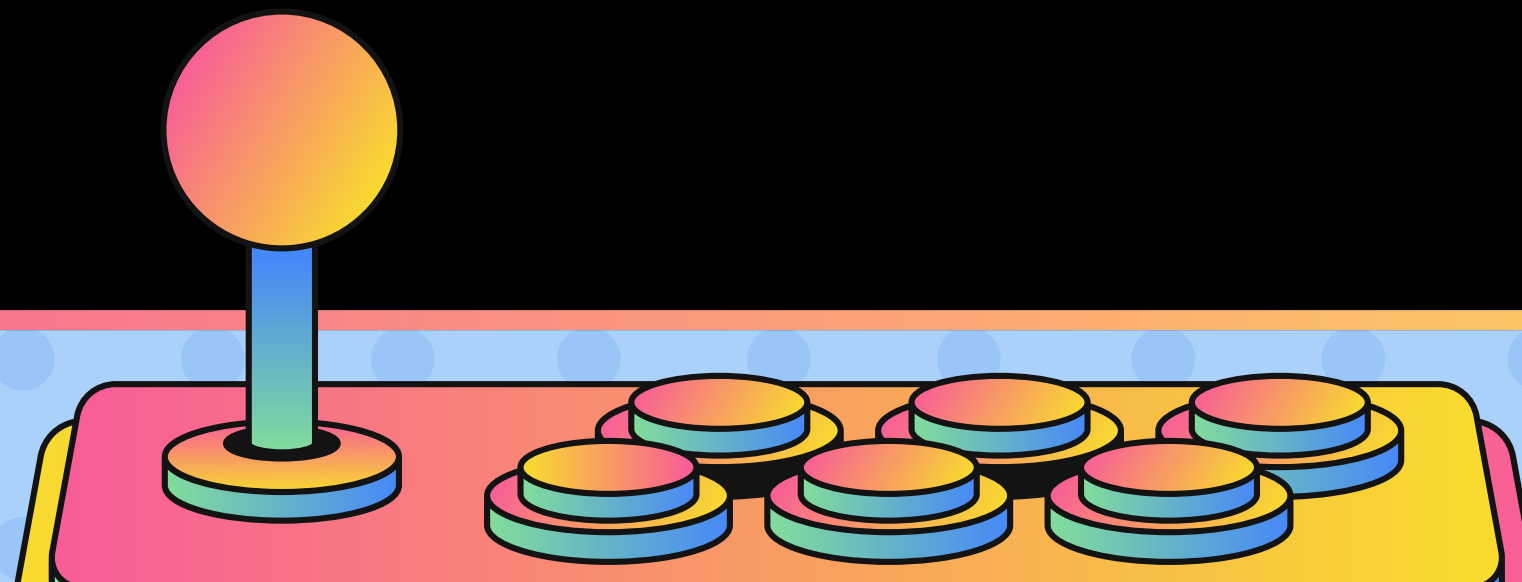
S'arrespusta giusta est:

1-SU PISITU



ANIMALIS DE DOMU

***Non tèngiu cambas e non
camminu
bivu in s'acqua ma arrespiru***

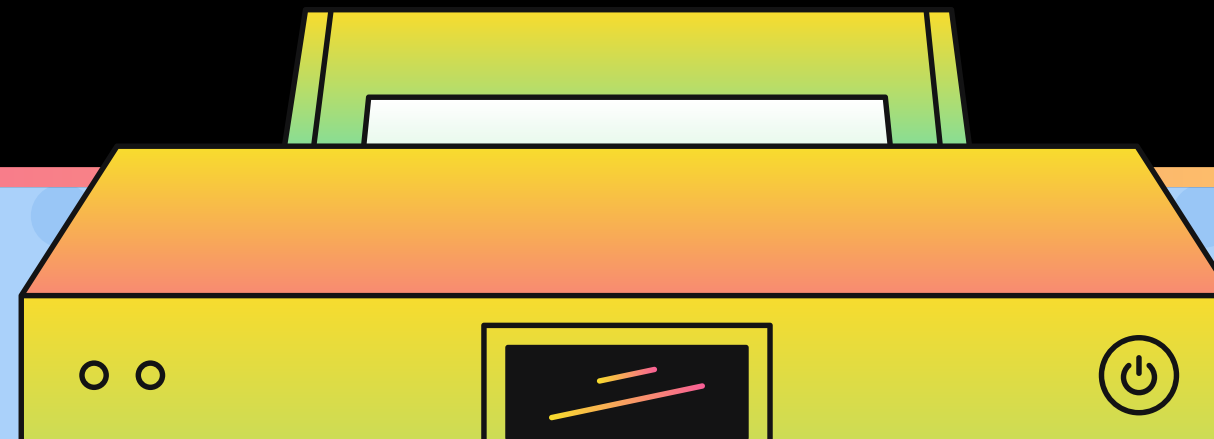


ARRESPUSTA

1- SU MARXANI

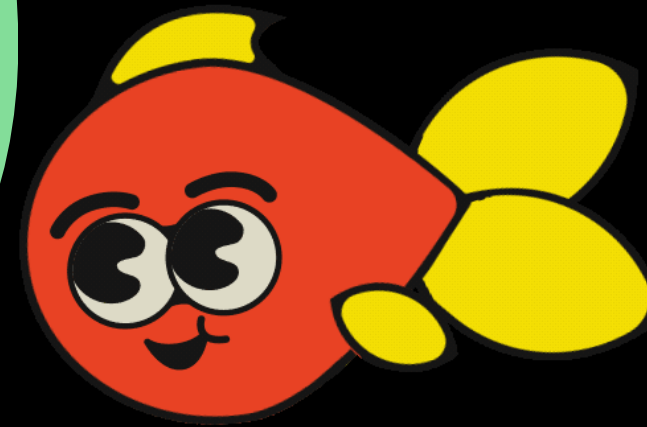
2- SU PISCI

3- SU CONILLU



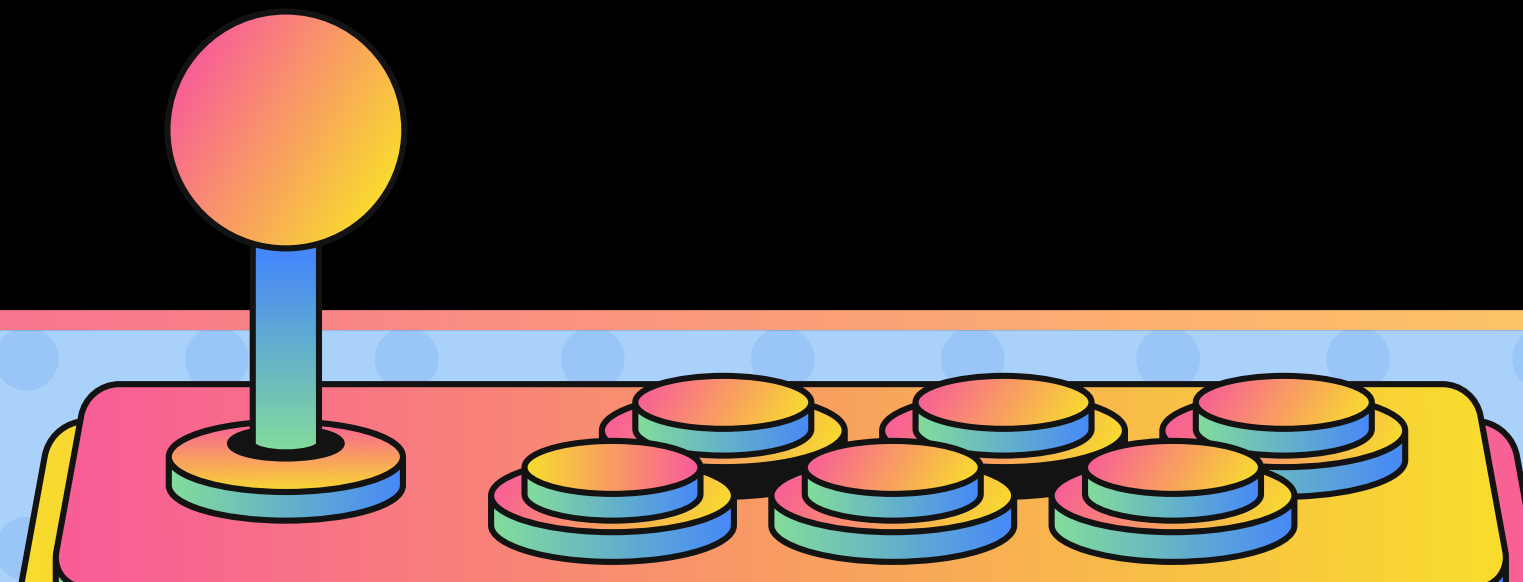
S'arrespusta giusta est:

SU PISCI



**ANIMALIS DE
S'ARGIOLA**

***Su mengianu scidu totu su bixinau
fatzu is ous ma non seu brava in
coxina...chini seu?***

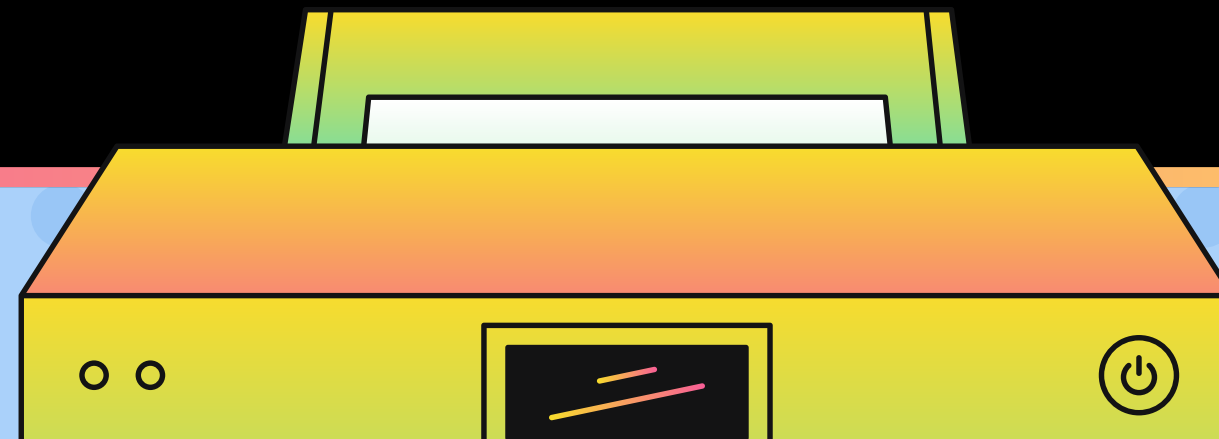


ARRESPUSTA

1- SA PUDDA

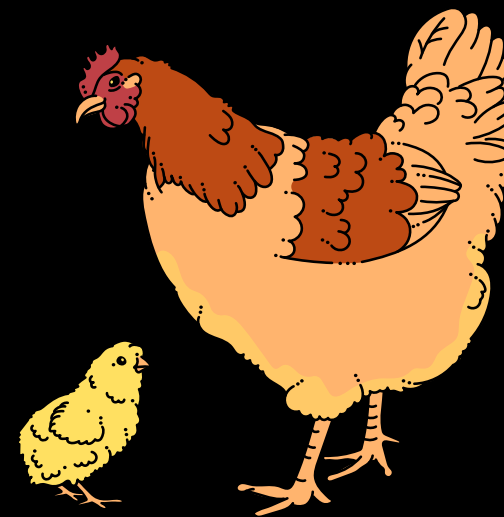
2- SU CABONI

3- SU CUADDU



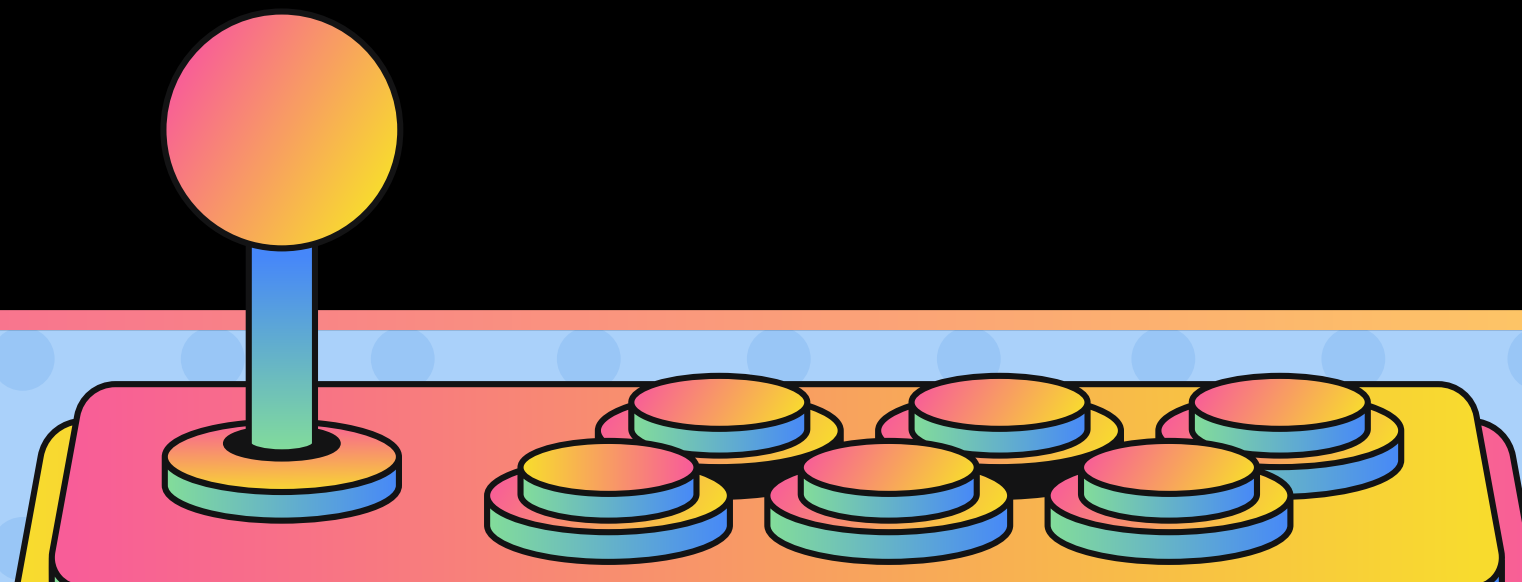
S'arrespusta giusta est:

SA PUDDA



**ANIMALIS DE
S'ARGIOLA**

***In Sardigna seus 3 milionis.
Seu bianca ma fintzas niedda.
M'agatais in su sartu ...chini seu?***

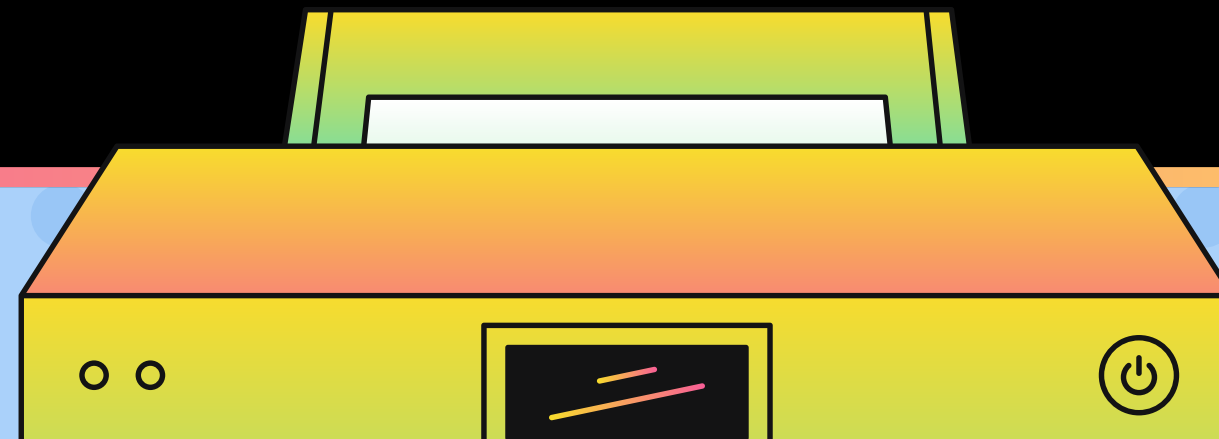


ARREPUSTA

1- SA BACA

2- SA BRABEI

3- SA CRABA



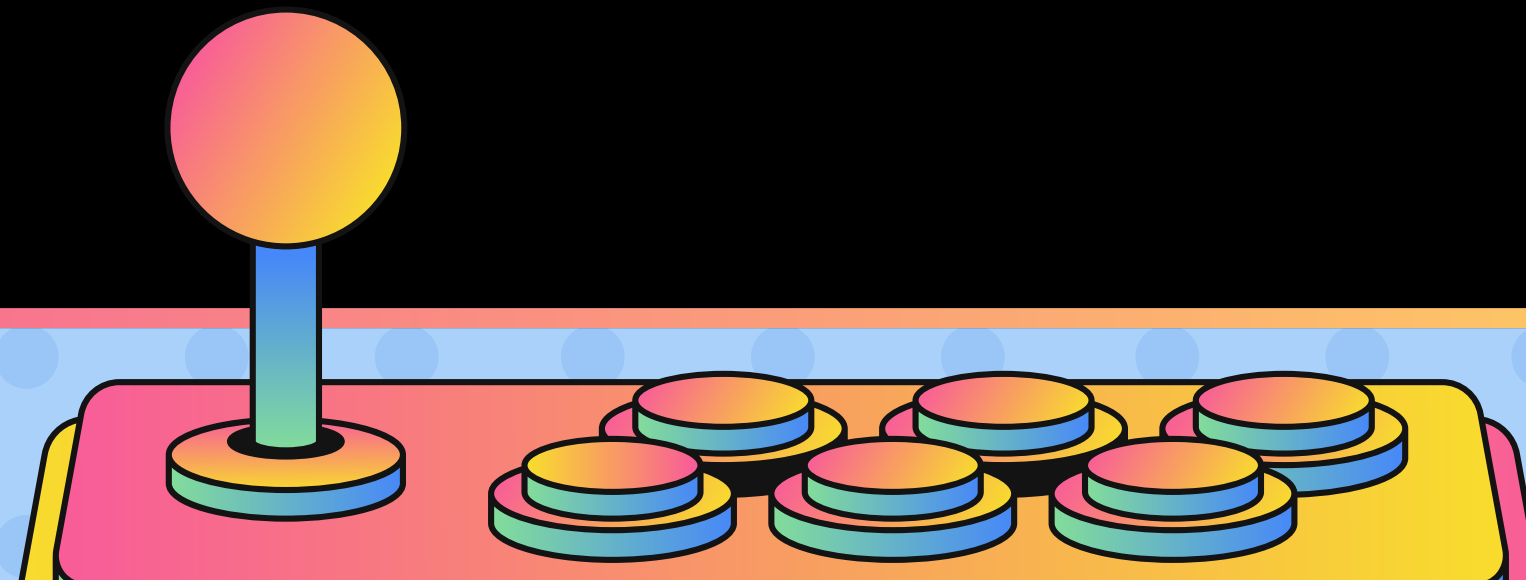
S'arrespusta giusta est:

SA BRABEI



**ANIMALIS DE
S'ARGIOLA**

***A bortas po giogai mi scavu in su
ludu. Potzu èssiri piticu ma
fintzas mannu...chini seu?***

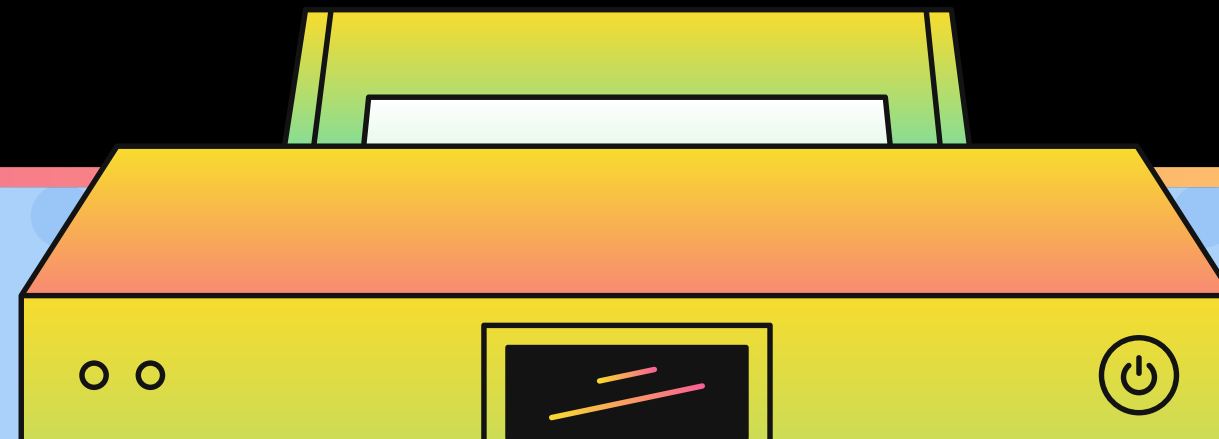


ARRESPUSTA

1- SU PROCU

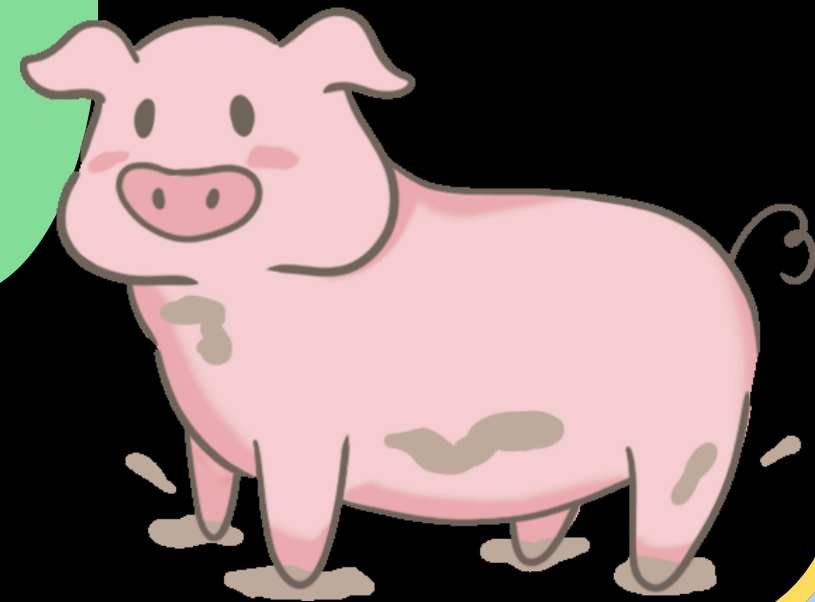
2- SU CONILLU

3- SA PUDDA



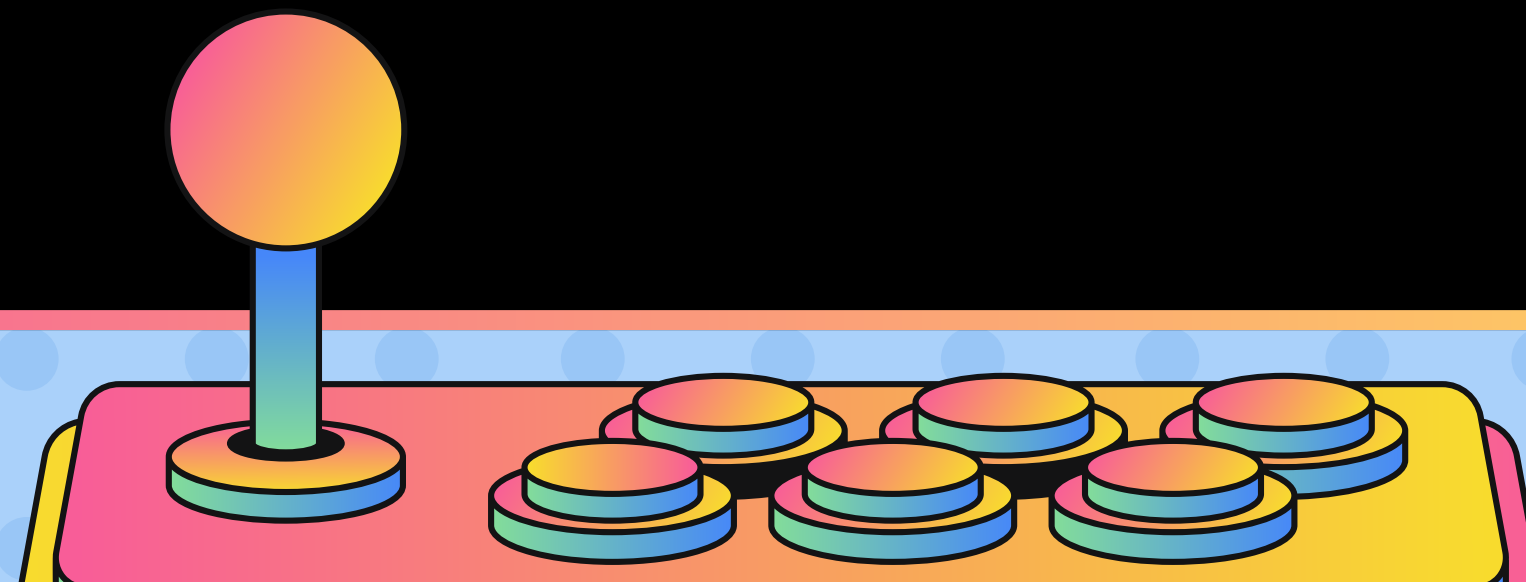
S'arrespusta giusta est:

SU PROCU



ANIMALIS ARESTIS

*Portu su pilu arrùbiu ca fogu, seu
abbista meda e in su padenti
andu a cassa...chini seu?*

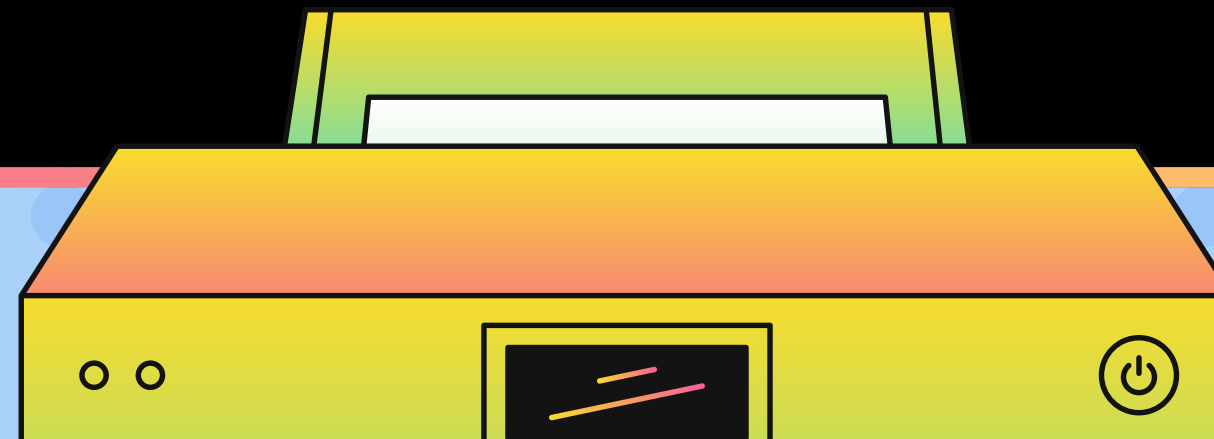


ARRESPUSTA

1-SU MARXANI

**2-SU
SITZIMURREDDU**

3-SU SIRBONI



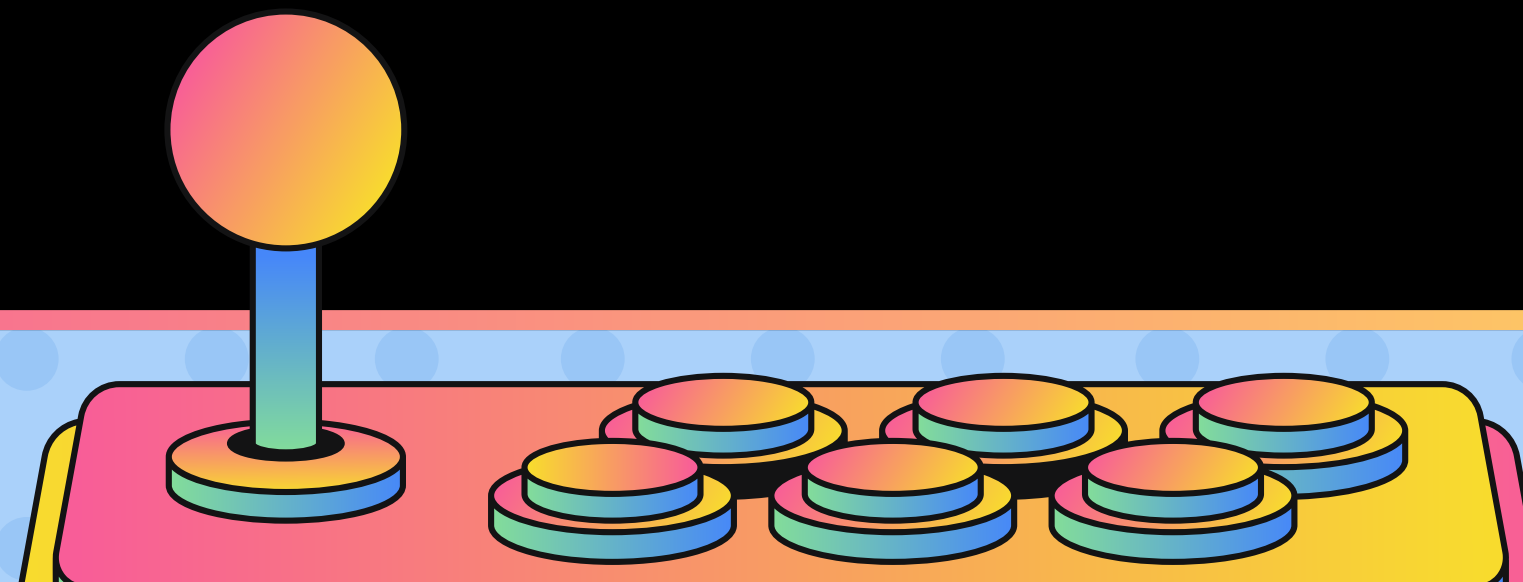
S'arrespusta giusta est:

SU MARXANI



ANIMALIS ARESTIS

***Assimbillu a su procu ma seu unu
pagu scurixeddu.
Bivu in su boscu e tengu dentis
acutzus...chini seu?***

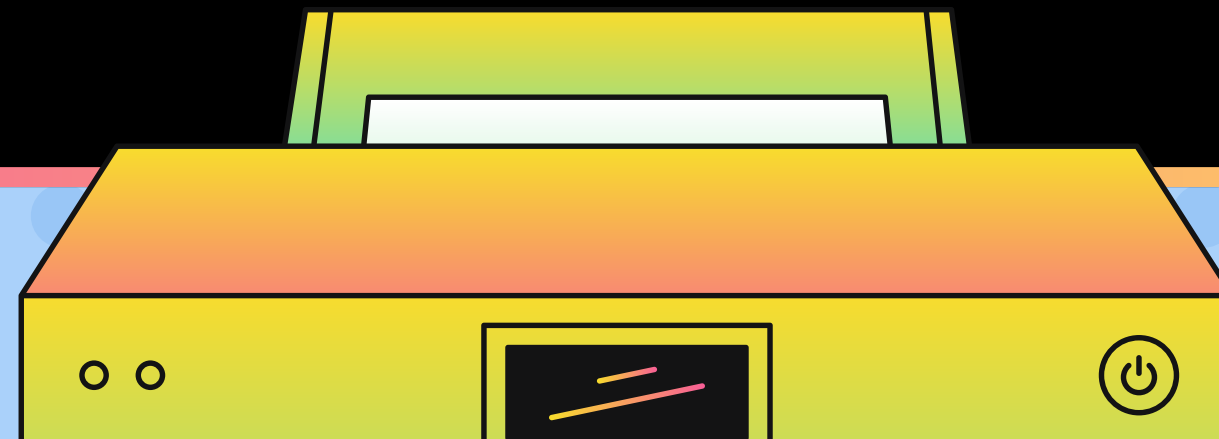


ARRESPUSTA

1-SU SIRBONI

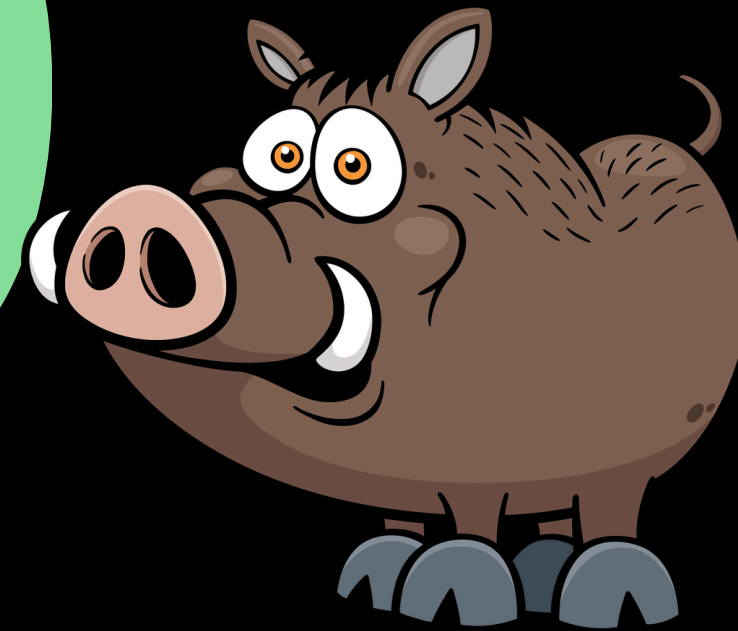
2-SU CERBU

3-SU CABONI



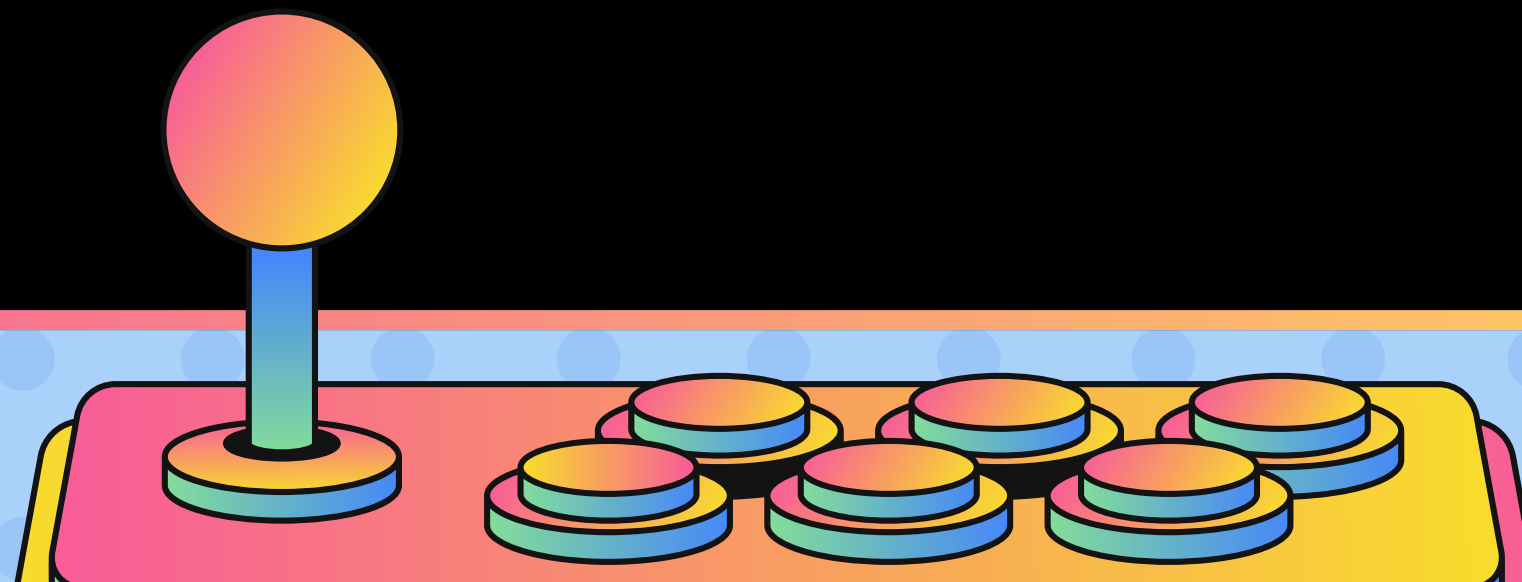
S'arrespusta giusta est:

SU SIRBONI



ANIMALIS ARESTIS

*Portu duus corrus longus longus,
mi praxit a passillai in is boscus e
in su monti...chini seu?*

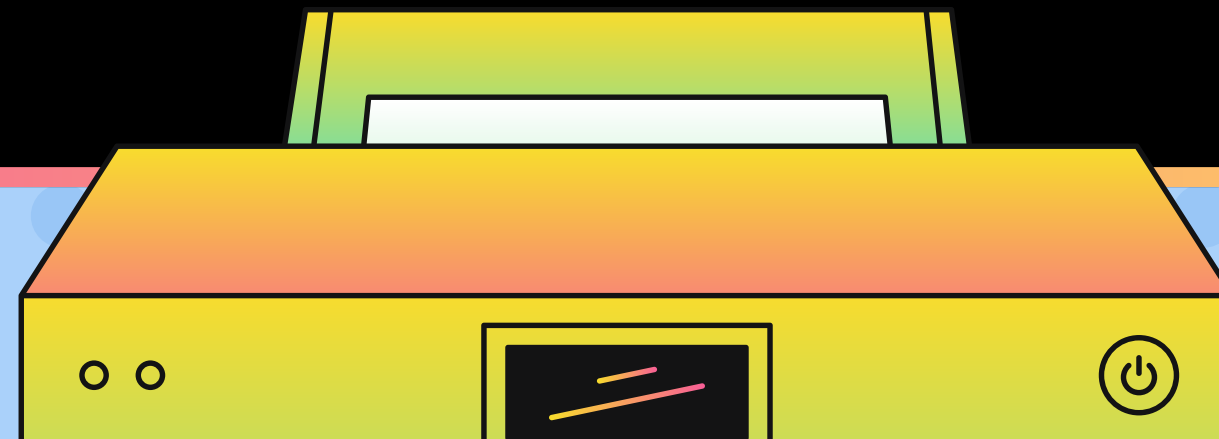


ARRESPUSTA

1- SU CERBU

2- SU MARXANI

3- SU PROCU



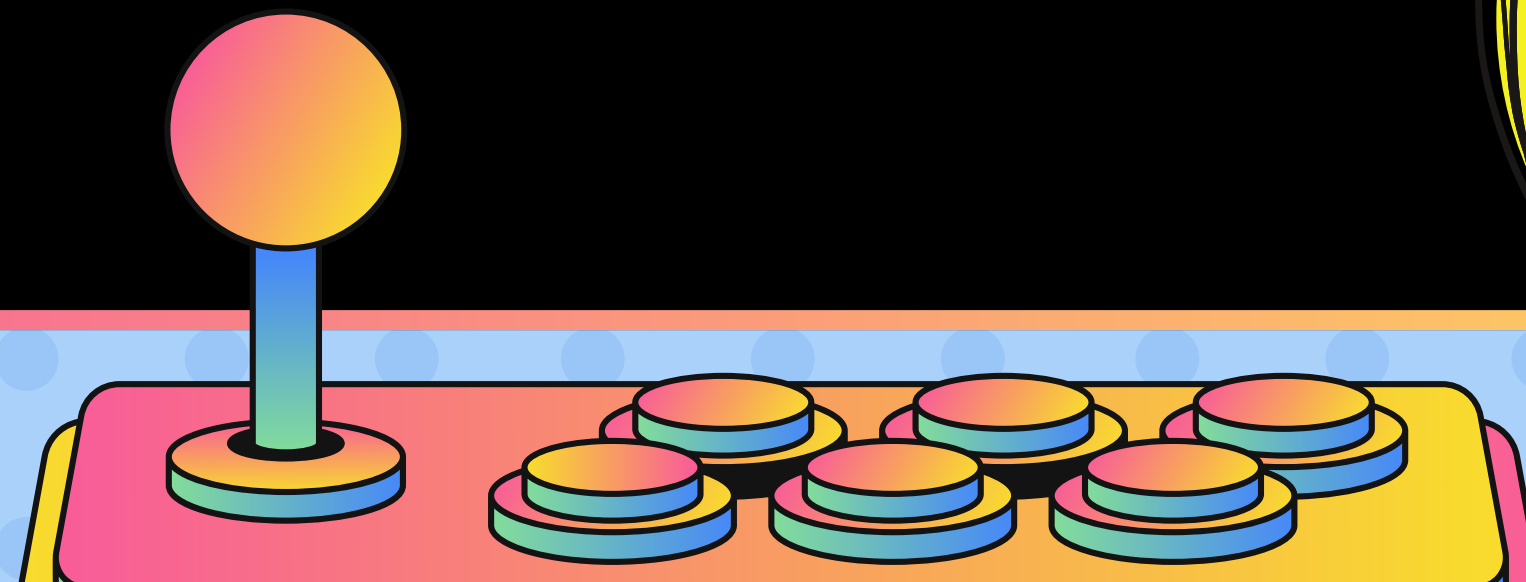
S'arrespusta giusta est:



SU CERBU

ANIMALIS ARESTIS

***Mi praxit meda sa noti. Non seu
unu pilloni ma portu is
alas...donai atentzioni candu
passais ca m'atacu a is pilus!***

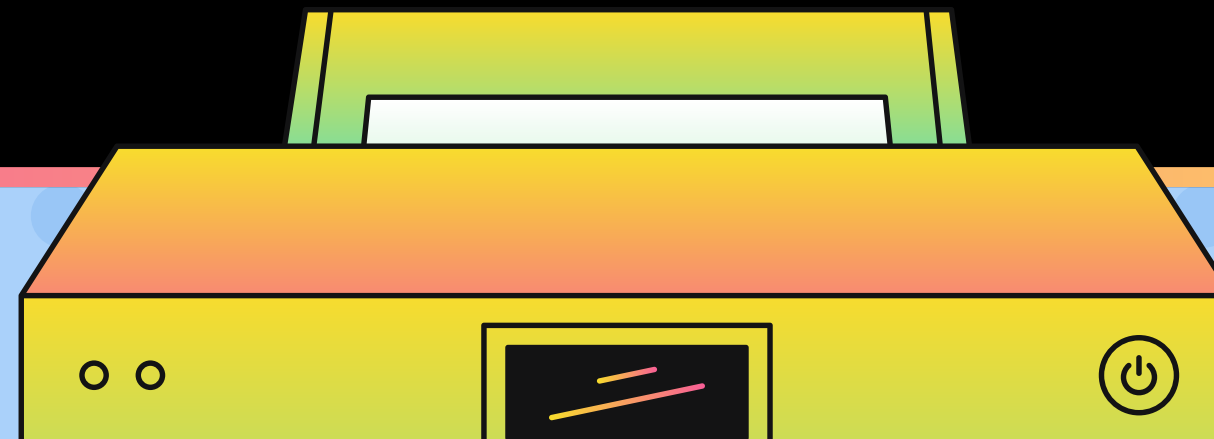


ARRESPUSTA

**1-SU
SITZIMURREDDU**

2-SU PILLONI

3-SU PISITU



S'arrespusta giusta est:

SU SITZIMURREDDU



***EUS ACABAU!!!
BRAVUS/BRAVAS A
TOTUS!***

***GRÀTZIAS A TOTUS PO
AI GIOGAU CUN MEI!***

ACABBU