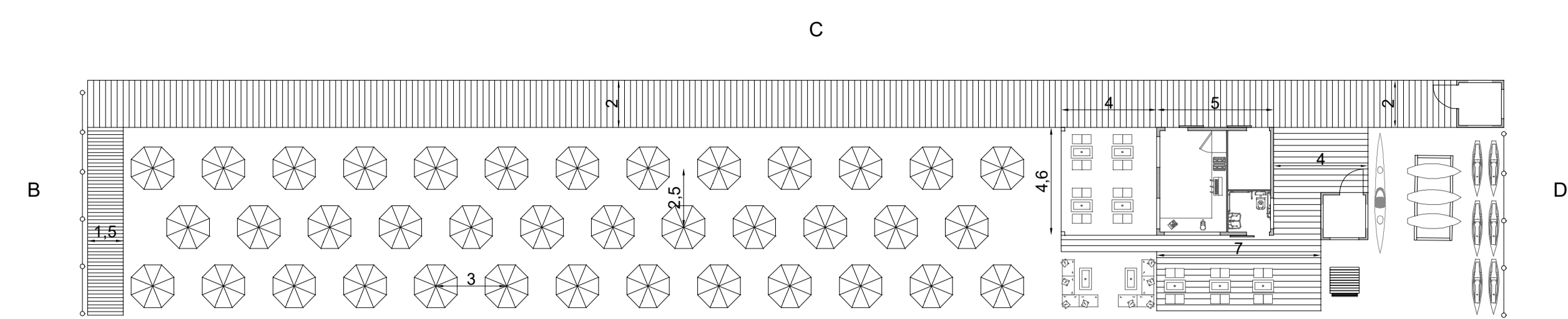
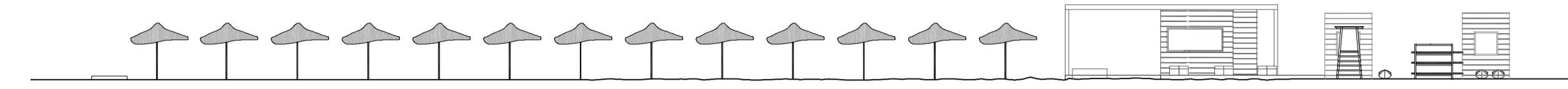


### Concessione tipo CDM:

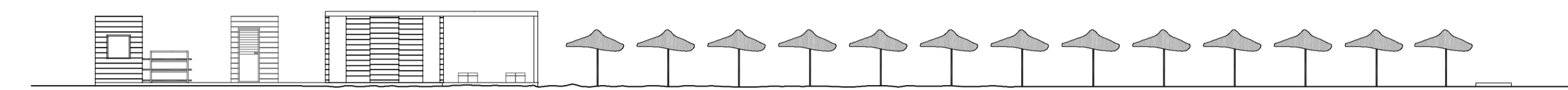
Posa ombrelloni, sdraio, lettini, chiosco bar, servizi igienici e noleggio piccoli natanti da spiaggia



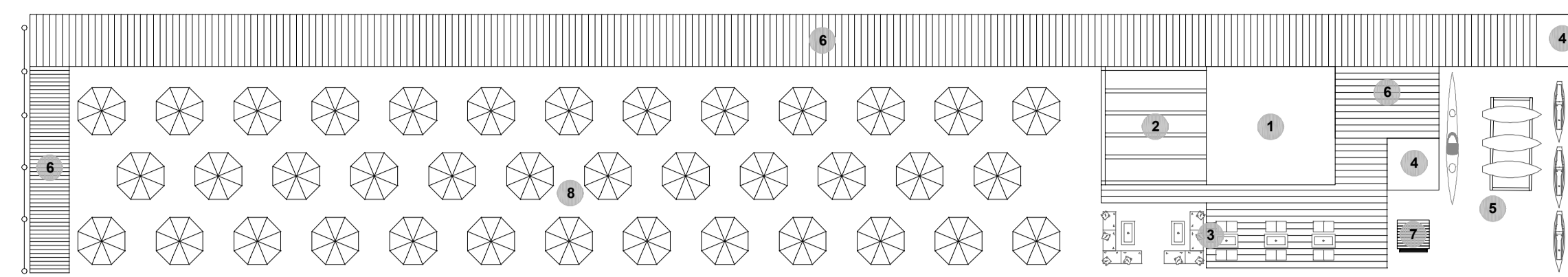
Pianta



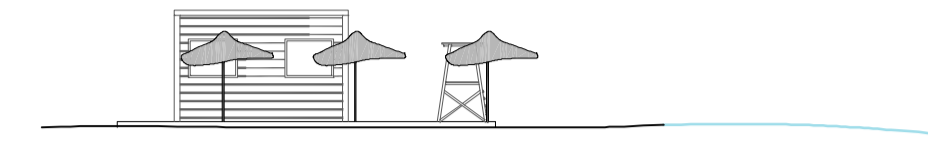
Prospetto A



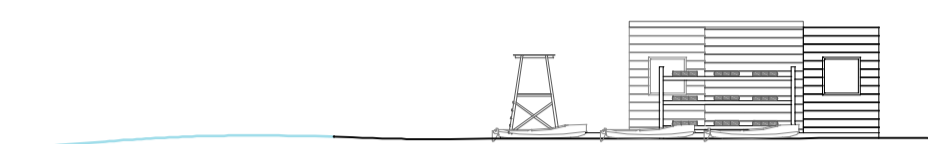
Prospetto C



Schema distributivo



Prospetto B

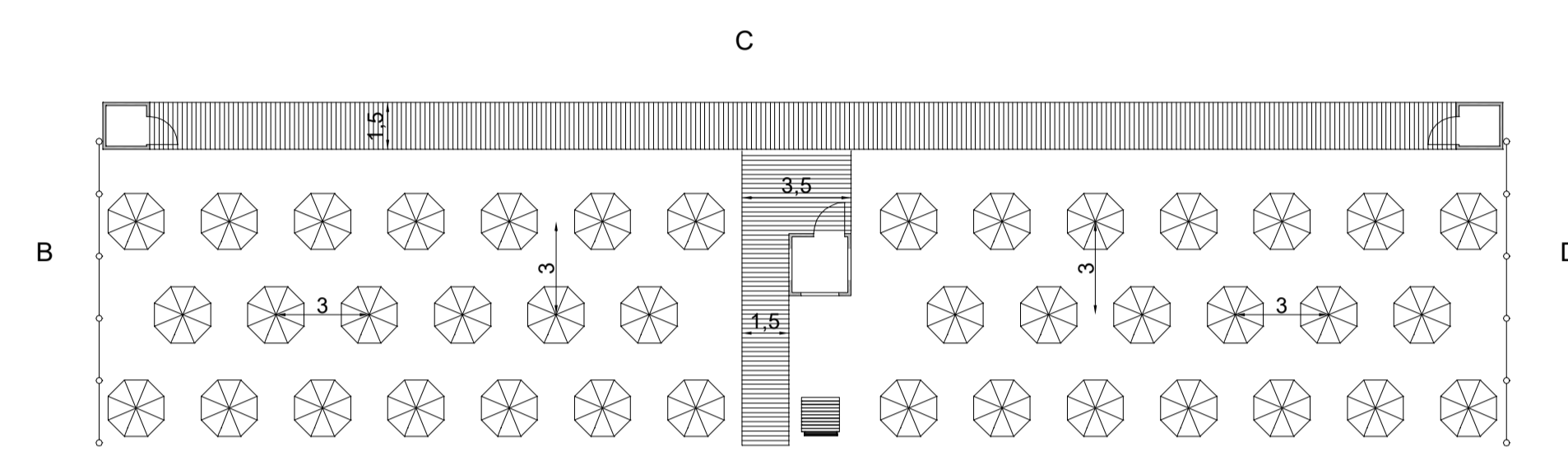


Prospetto D

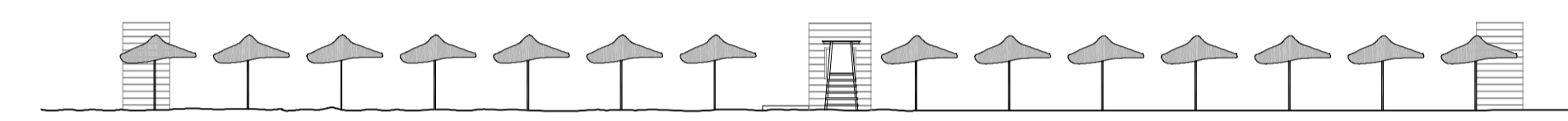
- 1 Chiosco bar e servizi igienici
- 2 Pedana ombreggiata
- 3 Posa tavoli e sedie
- 4 Box di servizio
- 5 Area attrezzata per noleggio natanti
- 6 Passerella
- 7 Torretta di salvataggio
- 8 Area sdraio, ombrelloni, lettini

### Concessione tipo CDS:

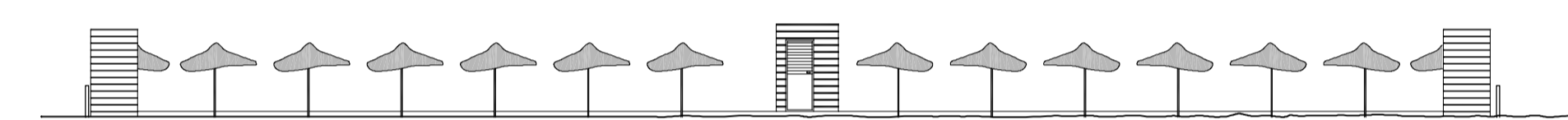
Posa ombrelloni, sdraio, lettini ad uso esclusivo dei clienti di strutture ricettive



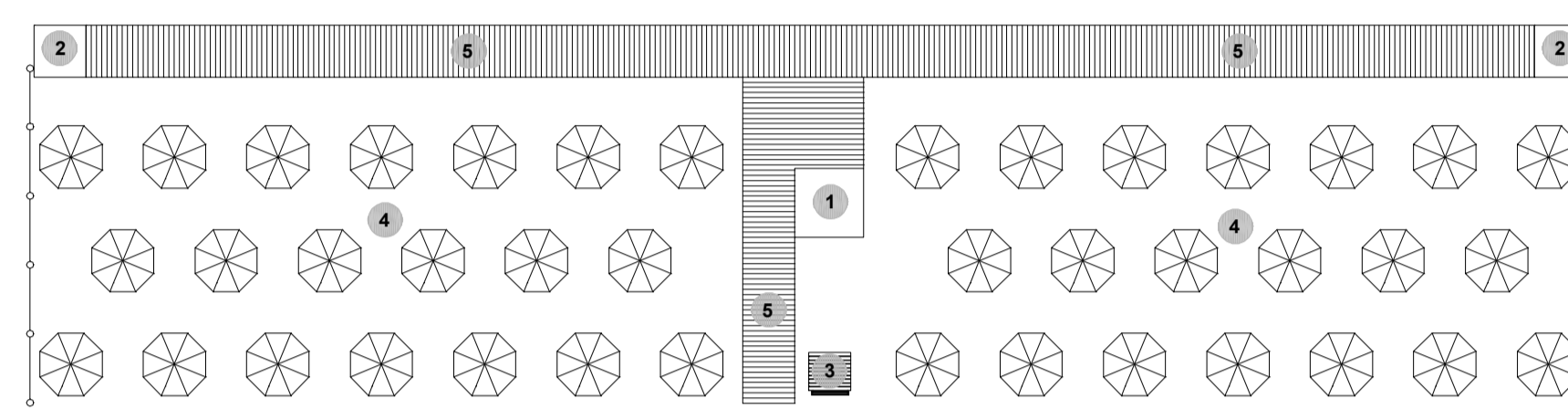
Pianta



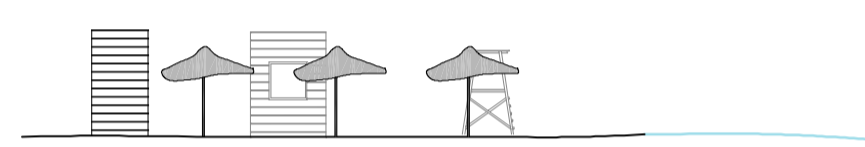
Prospetto A



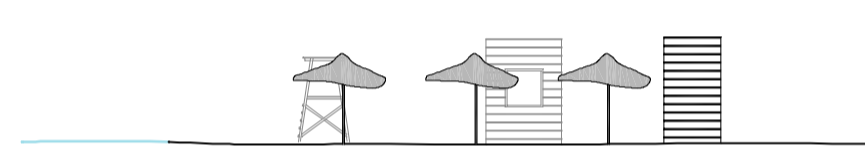
Prospetto C



Schema distributivo



Prospetto B

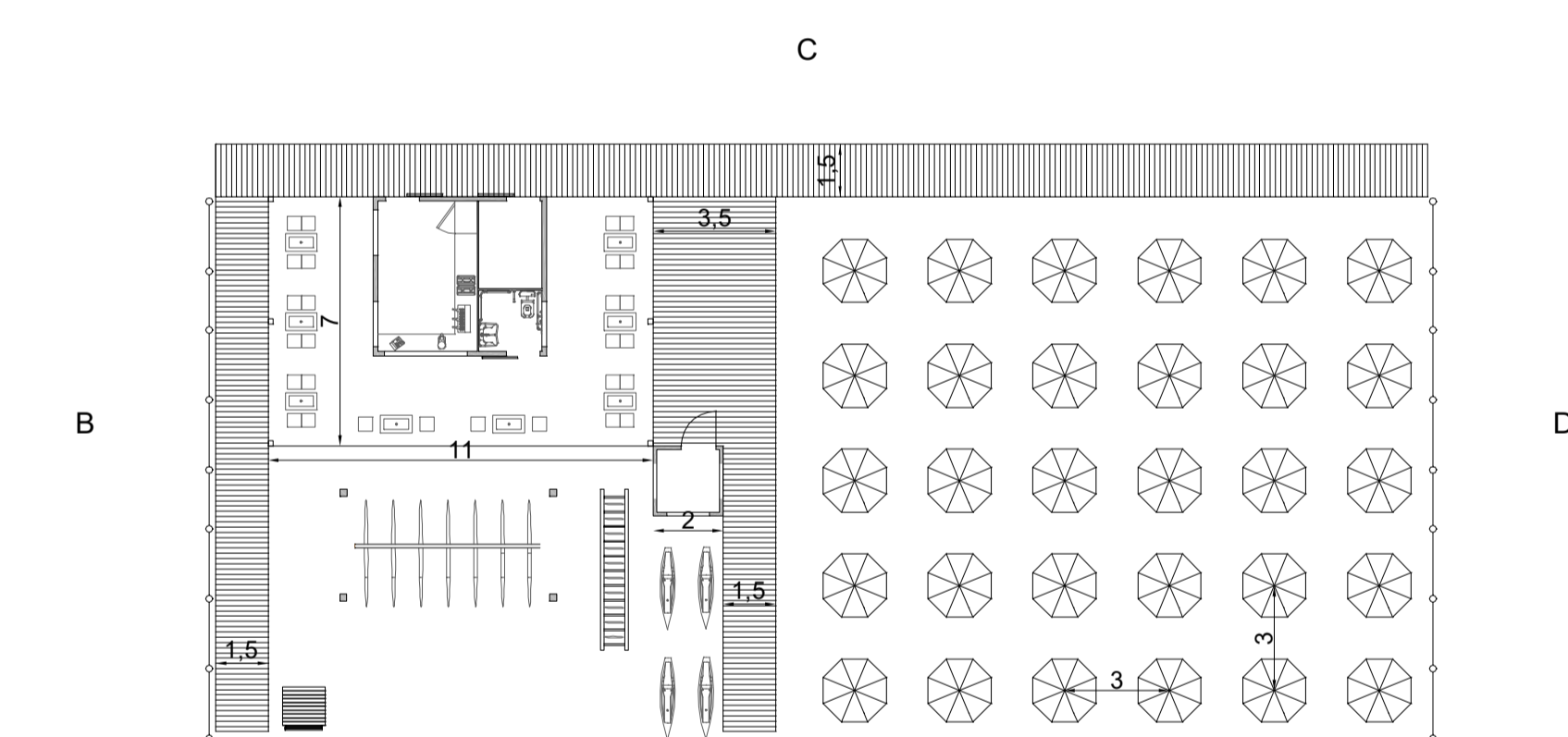


Prospetto D

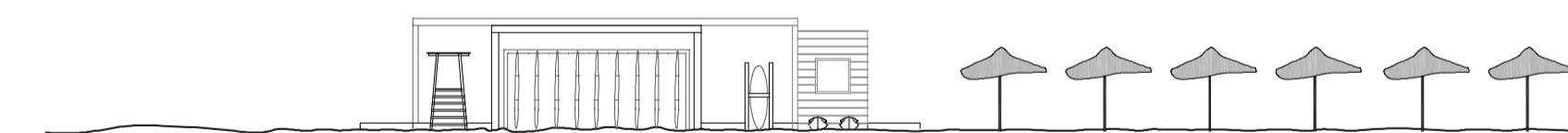
- 1 Box di servizio
- 2 Spogliatoi
- 3 Torretta di salvataggio
- 4 Area sdraio, ombrelloni, lettini
- 5 Passerelle

### Concessione tipo CDM:

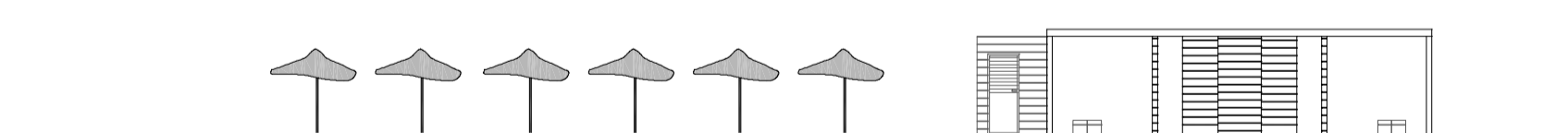
Posa ombrelloni, sdraio, lettini, chiosco bar, servizi igienici, scuola vela/ kite surf e noleggio piccoli natanti da spiaggia



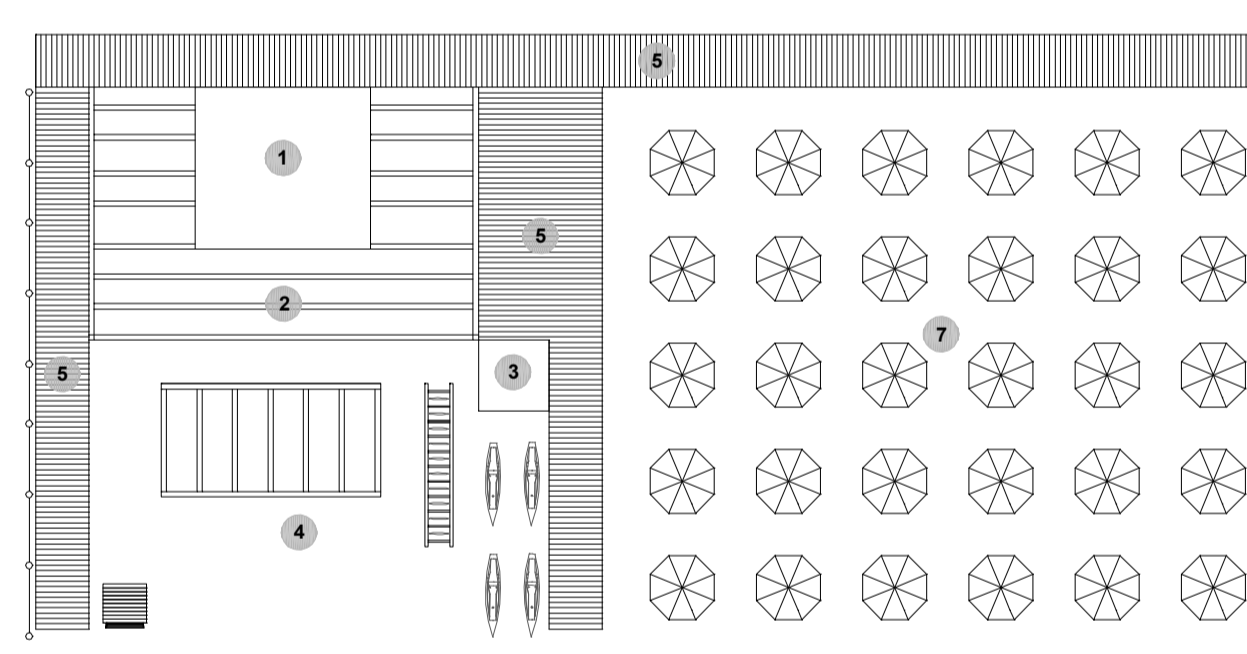
Pianta



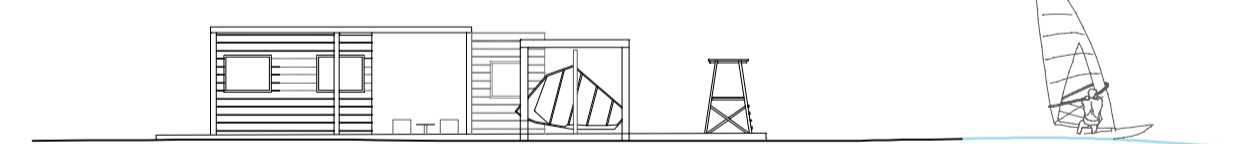
Prospetto A



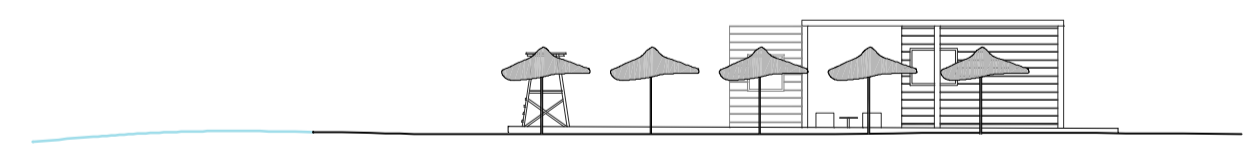
Prospetto C



Schema distributivo



Prospetto B

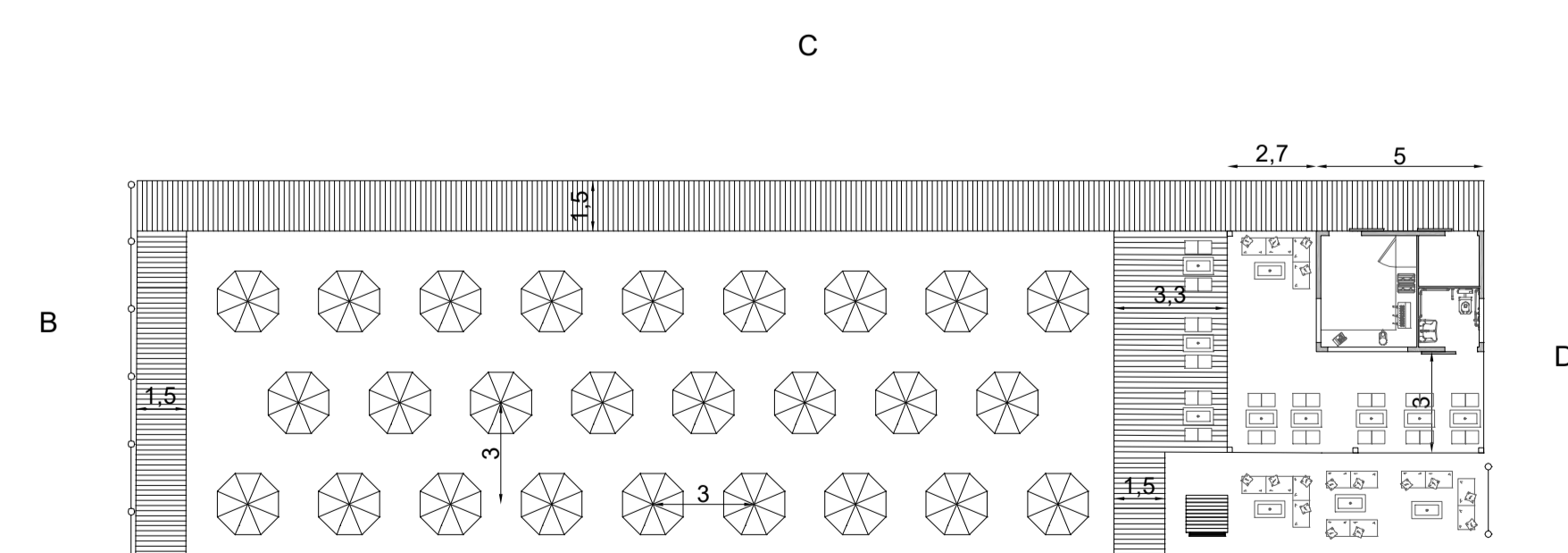


Prospetto D

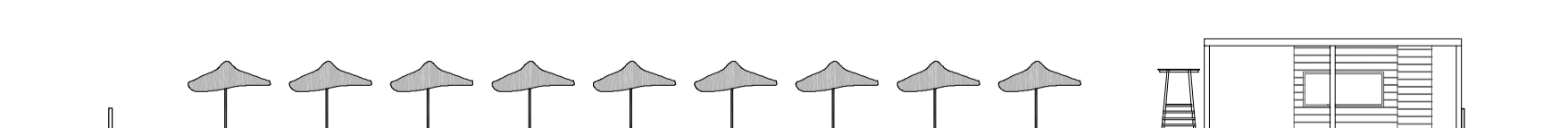
- 1 Chiosco bar e servizi igienici
- 2 Pedana ombreggiata
- 3 Box di servizio
- 4 Area attrezzata scuola e per noleggio natanti
- 5 Passerella
- 6 Torretta di salvataggio
- 7 Area sdraio, ombrelloni, lettini

### Concessione CDS:

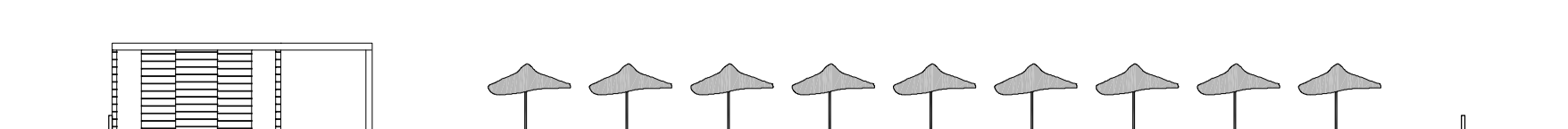
Posa ombrelloni, sdraio, lettini, chiosco bar e servizi igienici



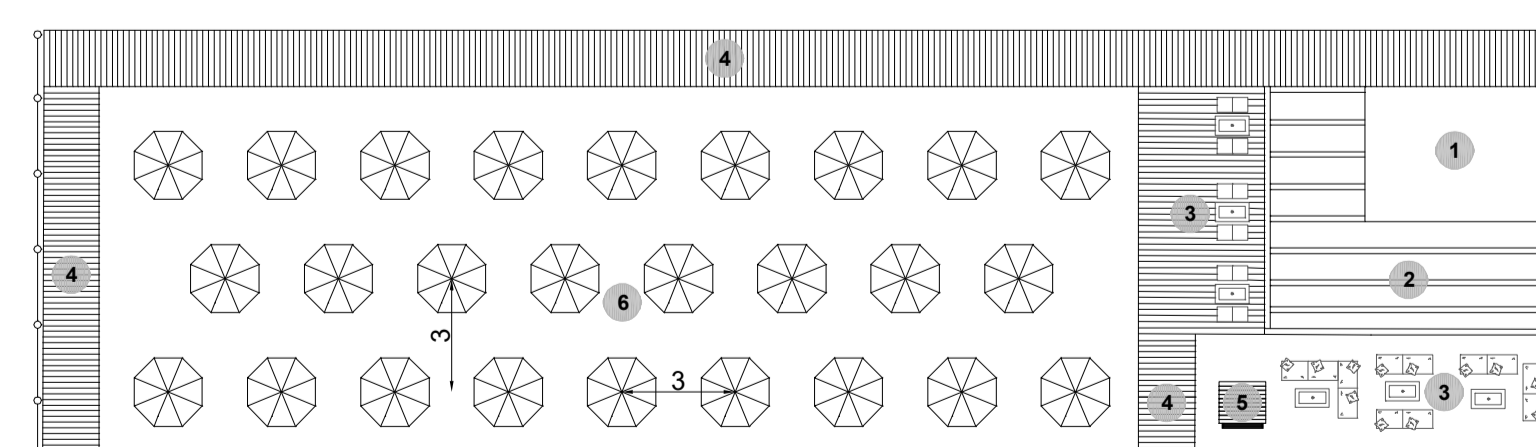
Pianta



Prospetto A



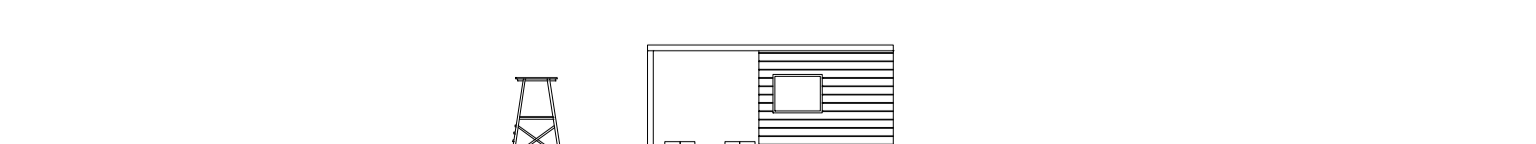
Prospetto C



Schema distributivo



Prospetto B



Prospetto D

- 1 Chiosco bar e servizi igienici
- 2 Pedana ombreggiata
- 3 Posa tavoli e sedie
- 4 Passerella
- 5 Torretta di salvataggio
- 6 Area sdraio, ombrelloni, lettini

## Piano di Utilizzo dei Litorali

L.R. n.9 del 12.06.2006 Art.41  
Deliberazione della G.R. n.28/12 del 4 giugno 2020



Il Sindaco  
Marco Muretti  
Vice sindaco e Assessore Urbanistica e Edilizia privata:  
Alessio Cerutti  
Responsabile Area Urbanistica e Edilizia Privata - Area Lavori Pubblici e Manutenzioni:  
Antonello Oggiano



GRUPPO DI LAVORO:  
Ing. Paolo Bagliani  
Geol. Maurizio Costa  
Ing. Silvia Cuccu  
Geol. Antonio Pitzalis  
Blot. Patrizia Sechi  
Nat. Riccardo Frau

**STATO DI PROGETTO**  
Tav.9 - Progetto base delle aree da affidare in concessione  
Scala 1:200