



# COMUNE DI LAURO

-Provincia di Avellino-

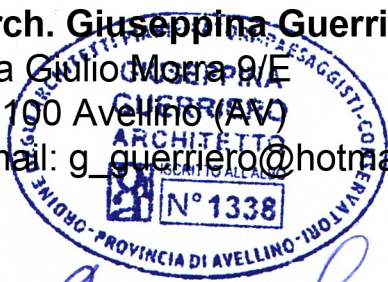
## PROGETTO ESECUTIVO

LAVORI DI SISTEMAZIONE E RIQUALIFICAZIONE DEL CIMITERO COMUNALE E  
REALIZZAZIONE DI NUOVI LOCULI. STRALCIO FUNZIONALE

Il Sindaco  
Dott. Antonio Bossone

PROGETTISTA:

**Arch. Giuseppina Guerriero**  
Via Giulio Mora 9/E  
83100 Avellino (AV)  
email: g\_guerriero@hotmail.it



*Giuseppina Guerriero*

RUP:

**Arch. Diego Maria Troncone**



TAVOLA:

**STATO DI PROGETTO  
PIANTE SEZIONI PROSPETTI E  
PARTICOLARI COSTRUTTIVI LOCULI**

ELABORATO:

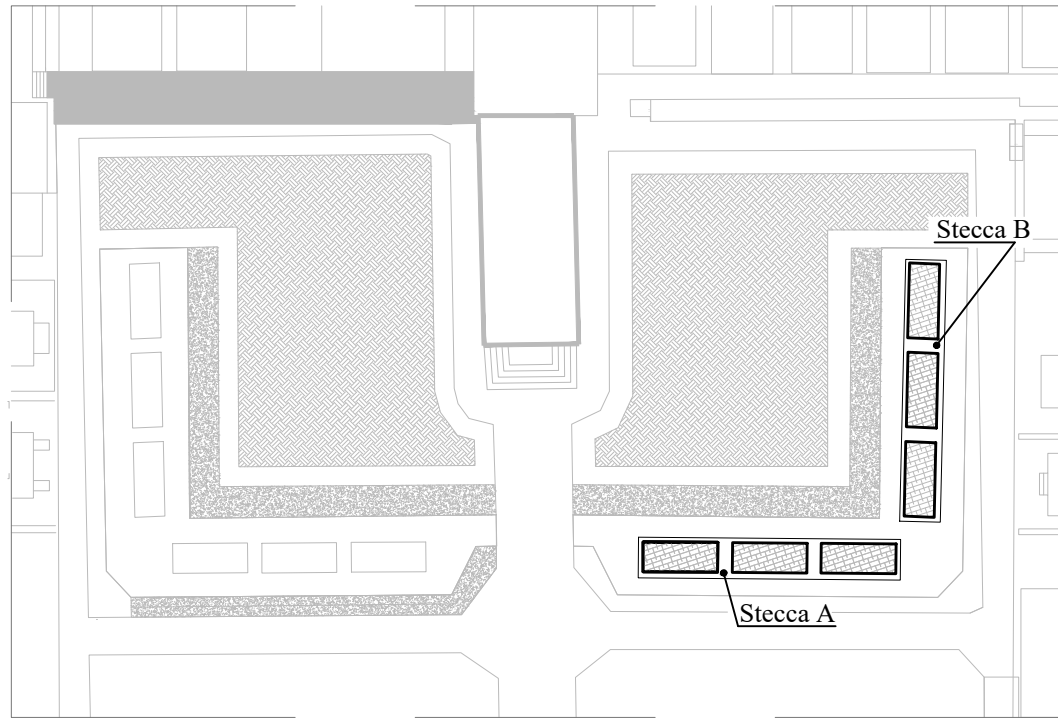
**TAV.6**

Scala: varie

MAGGIO 2019

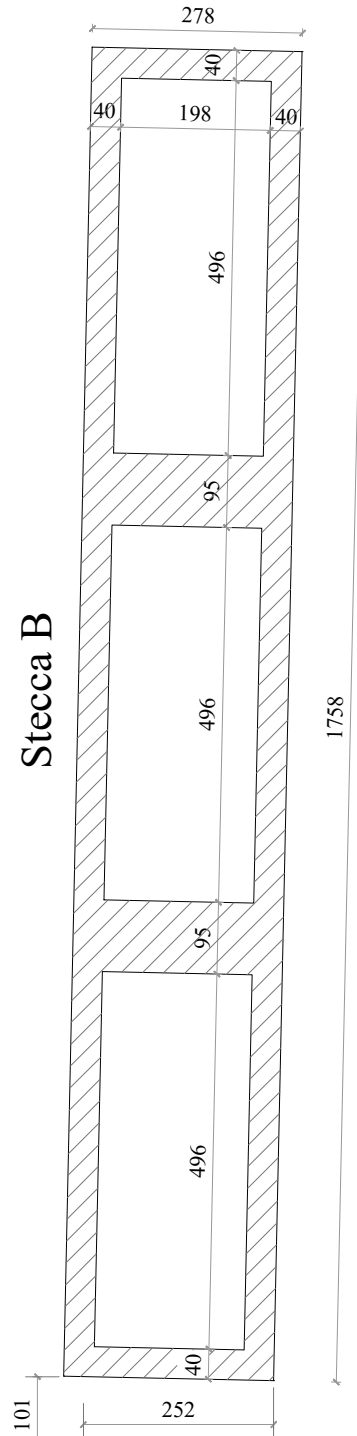
# PLANIMETRIA, PARTICOLARE COSTRUTTIVO E SEZIONE BATTERIA DI LOCULI

Chiave di lettura



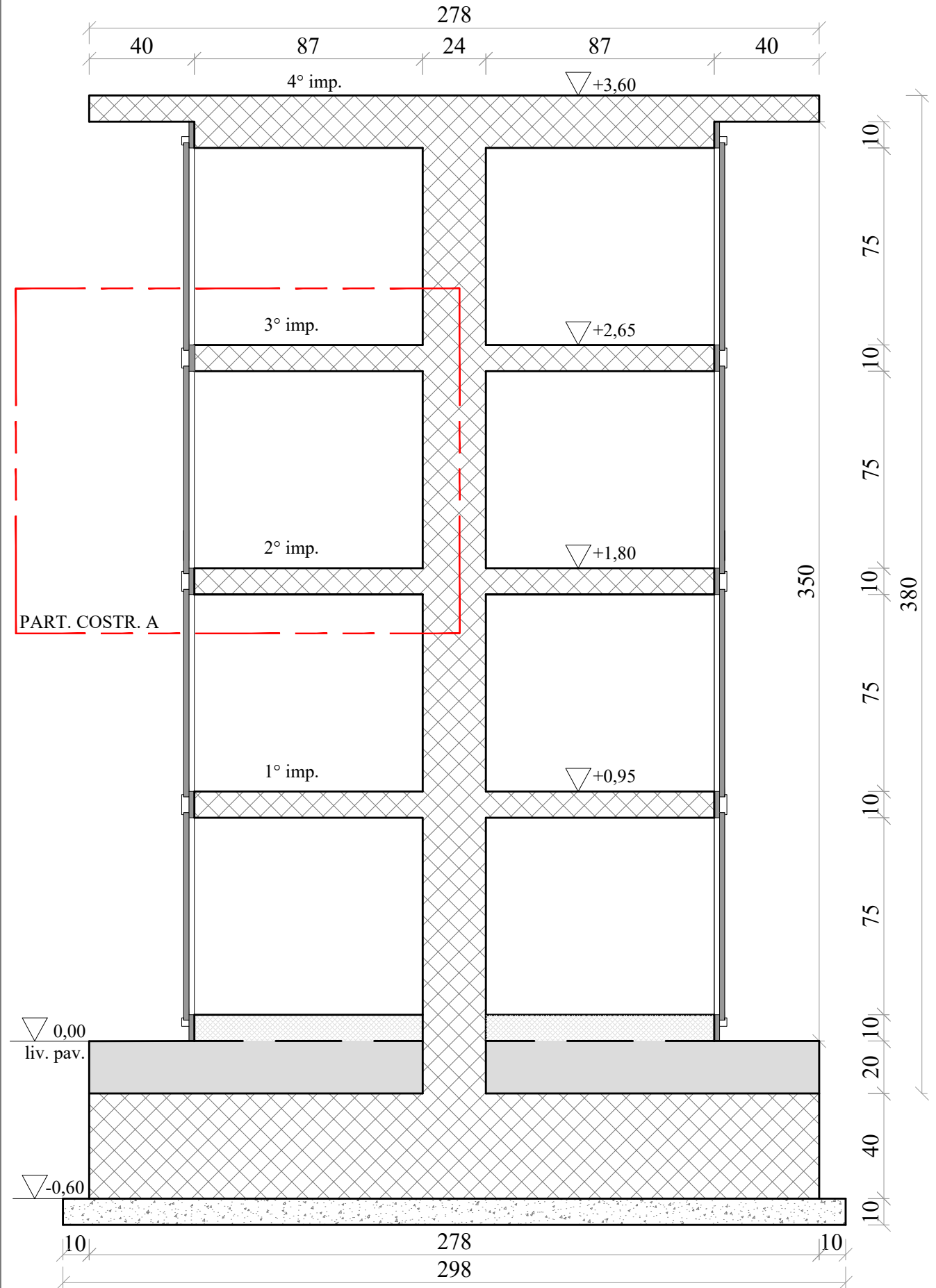
Scala 1:500

Planimetria Schematica



Scala 1:100

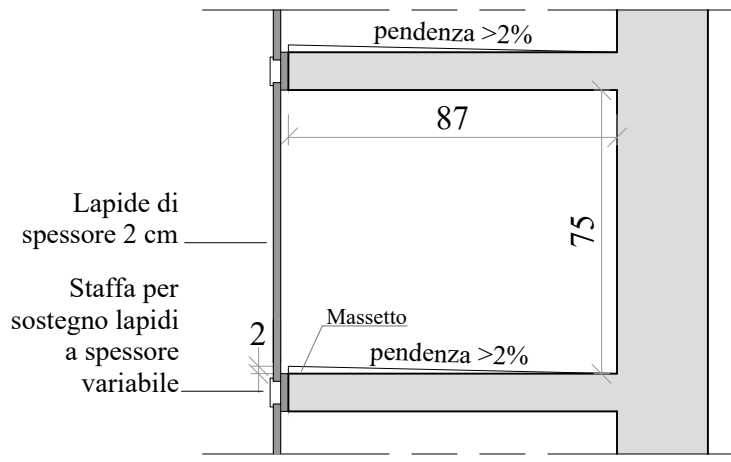
Sezione A/A'



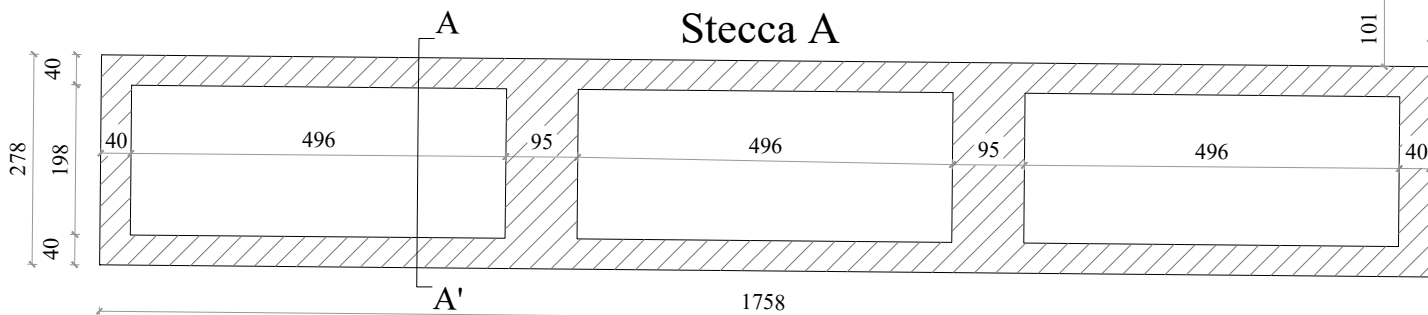
Scala 1:20

Particolare costruttivo A

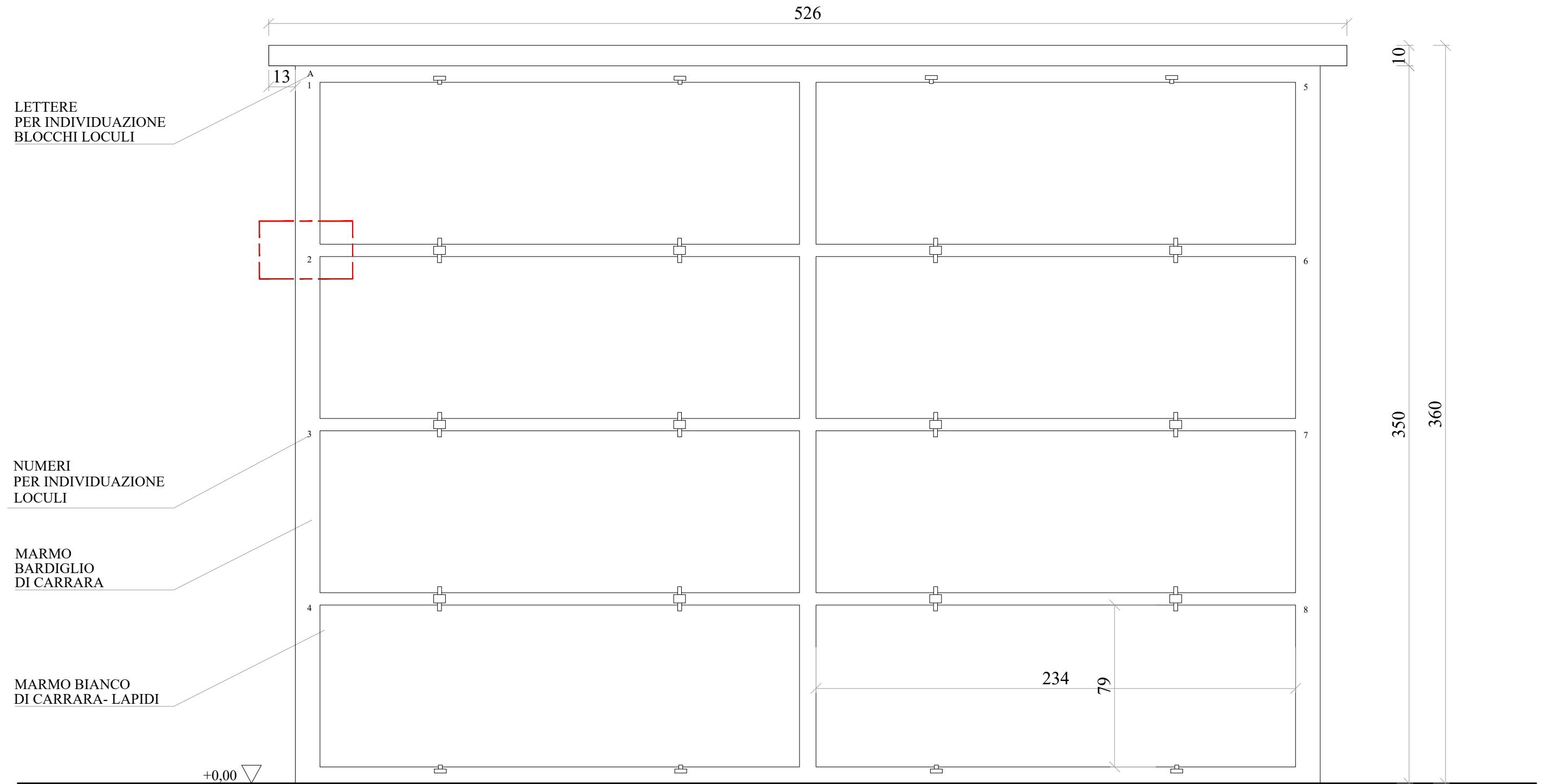
Scala 1:20



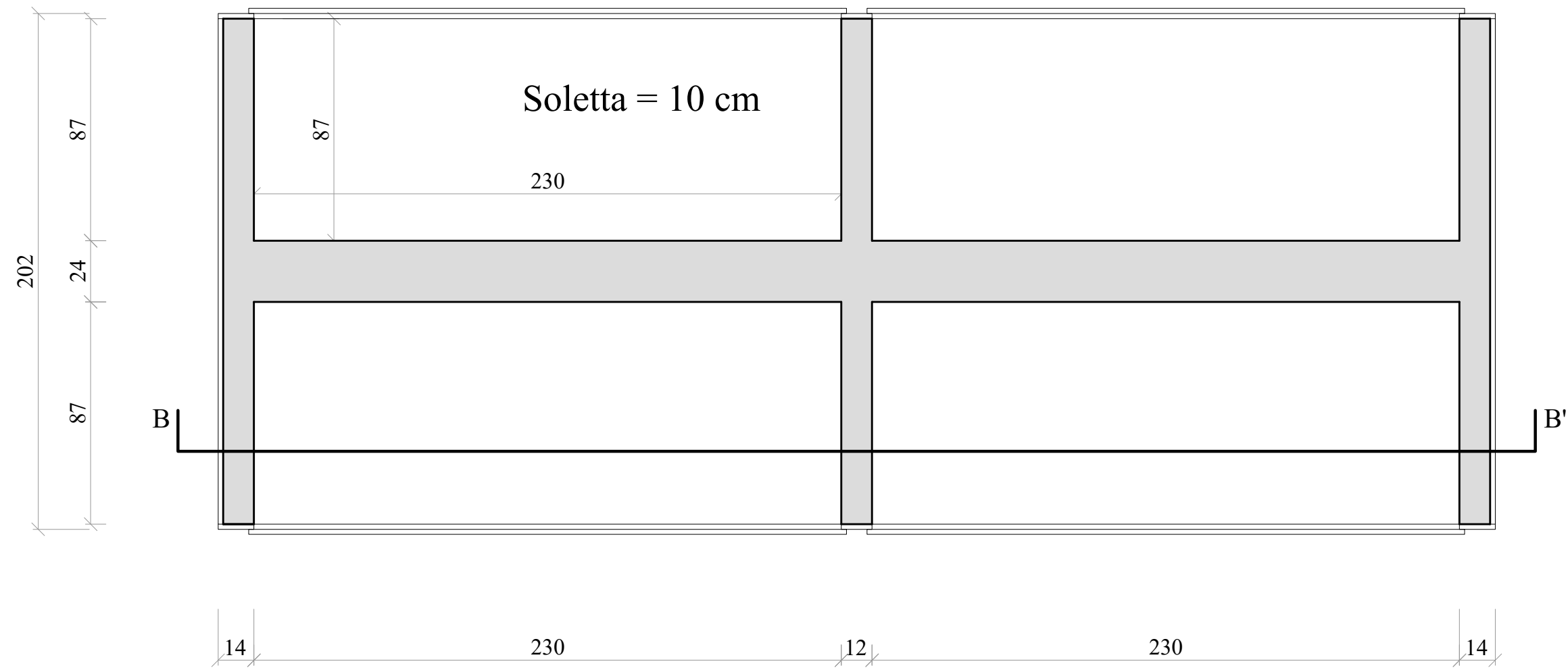
Stecca A



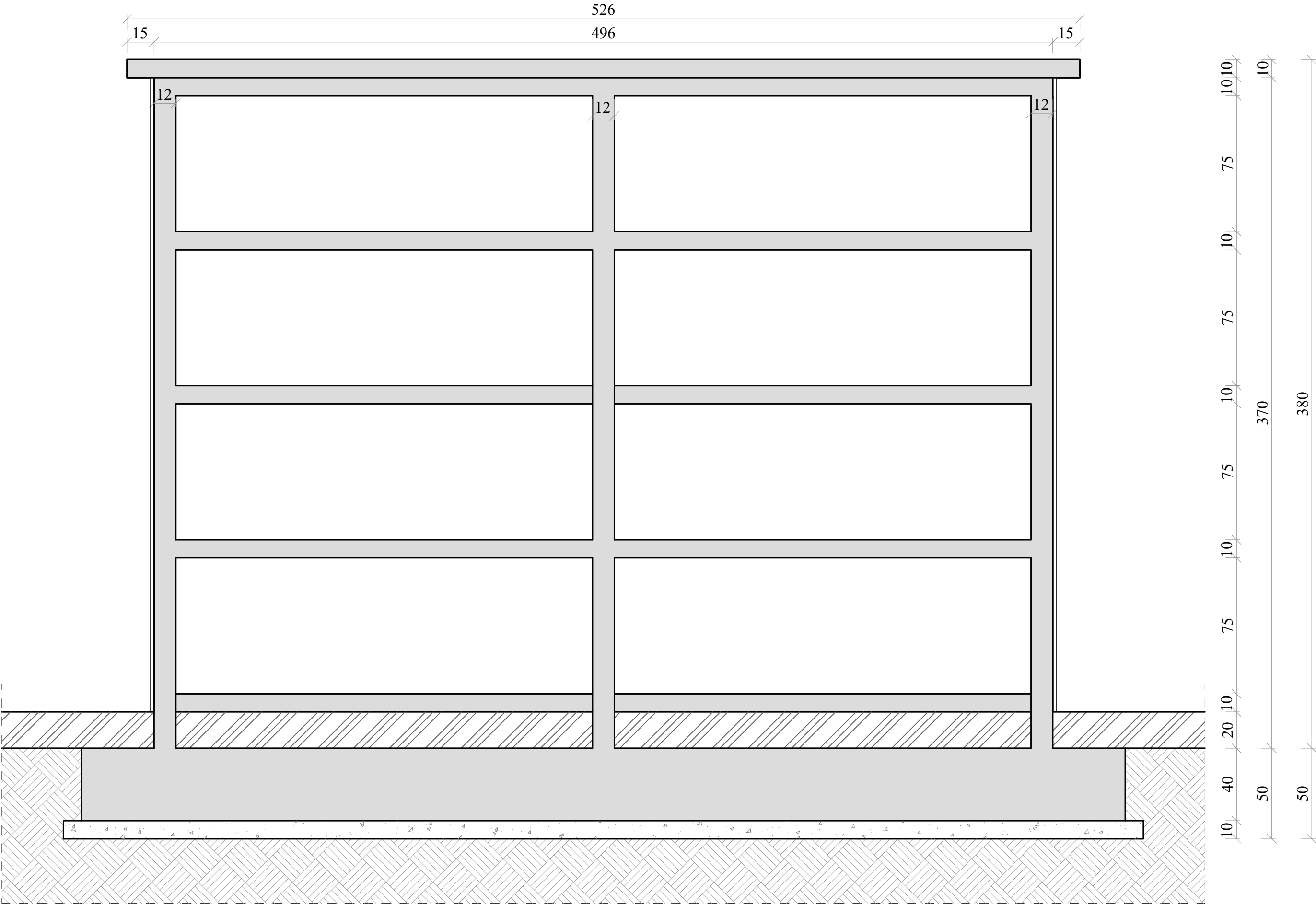
# Prospetto frontale



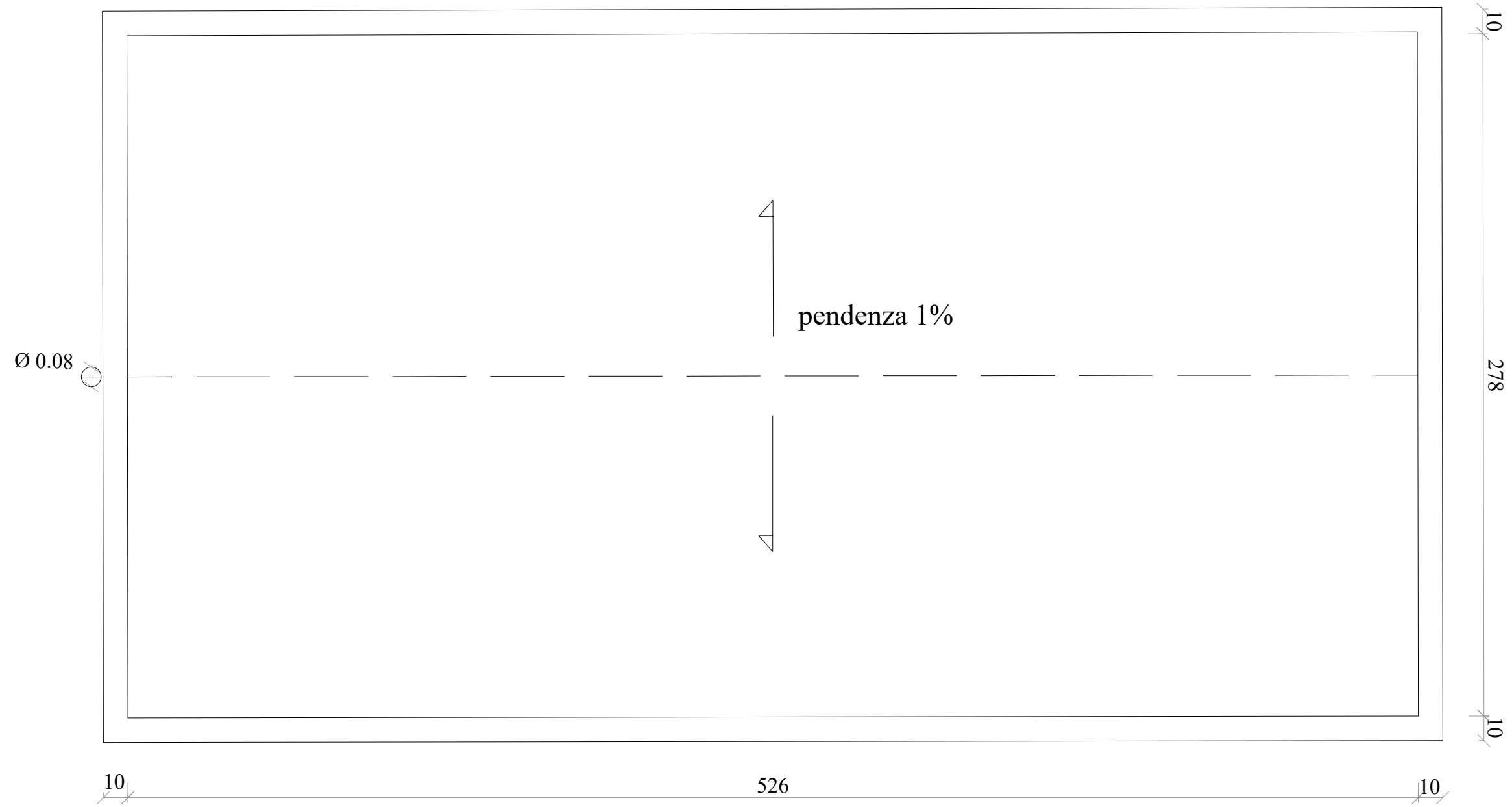
PARTICOLARE RIVESTIMENTO IN MARMO



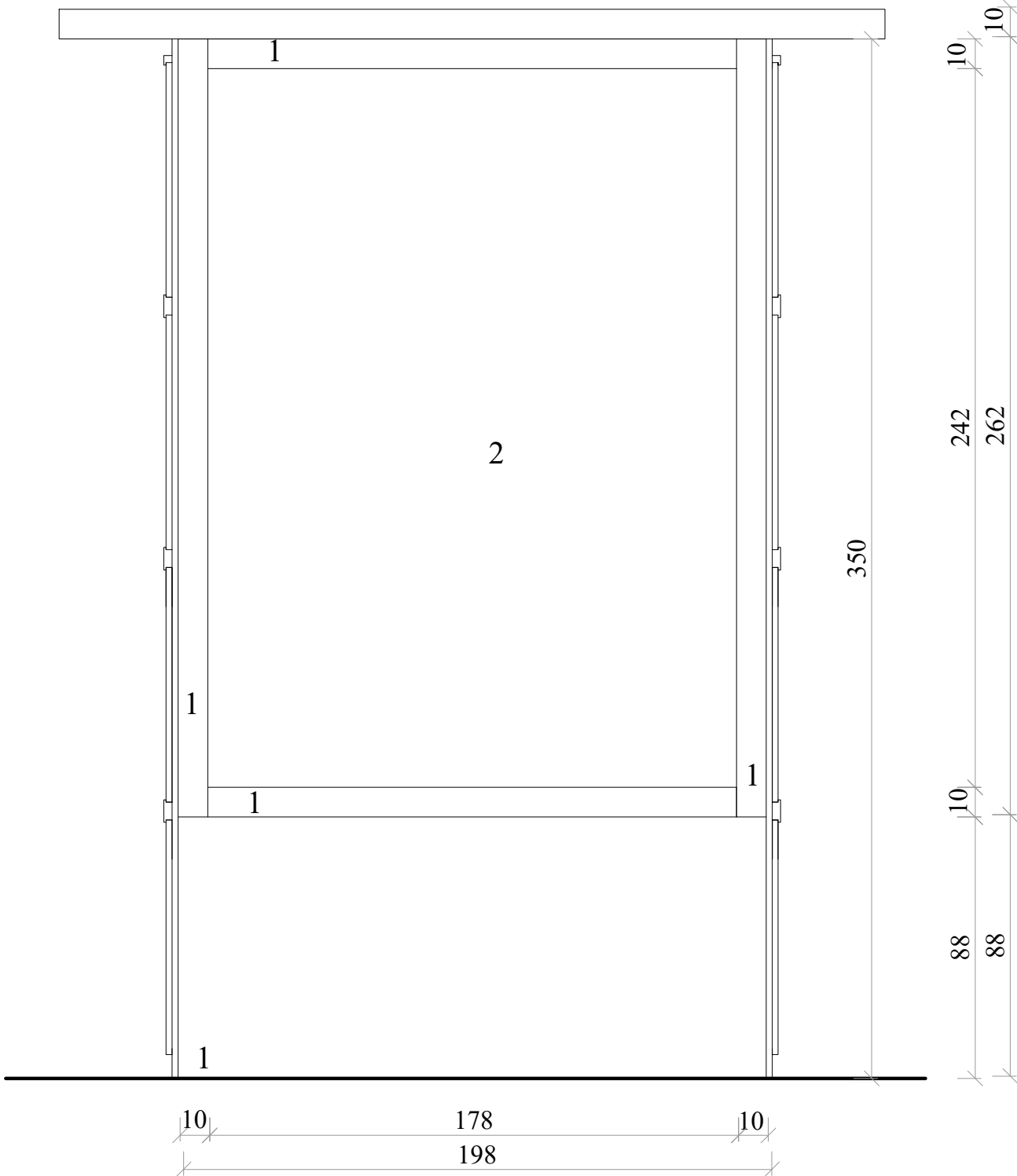
Sezione B/B'



Pianta Copertura



Prospetto laterale



PARTICOLARE RIVESTIMENTO IN MARMO



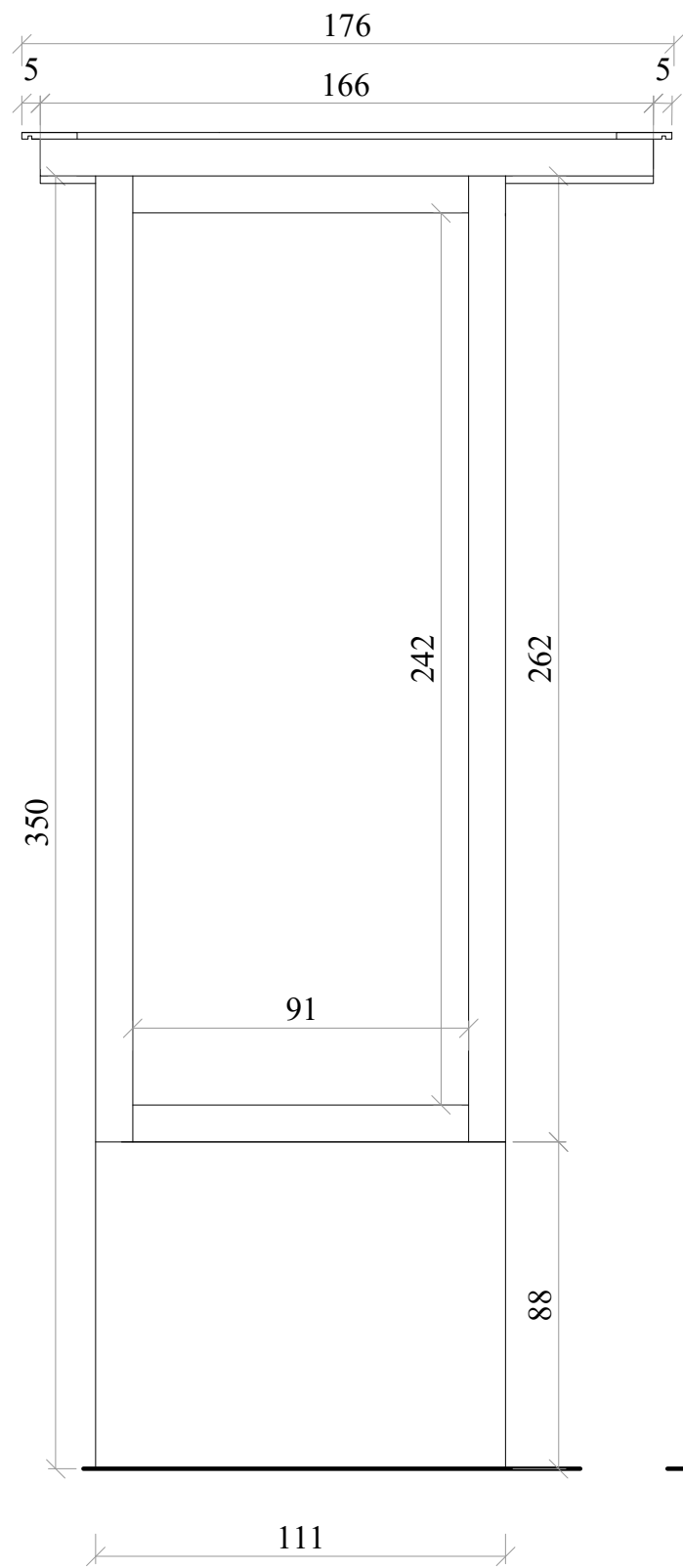
1



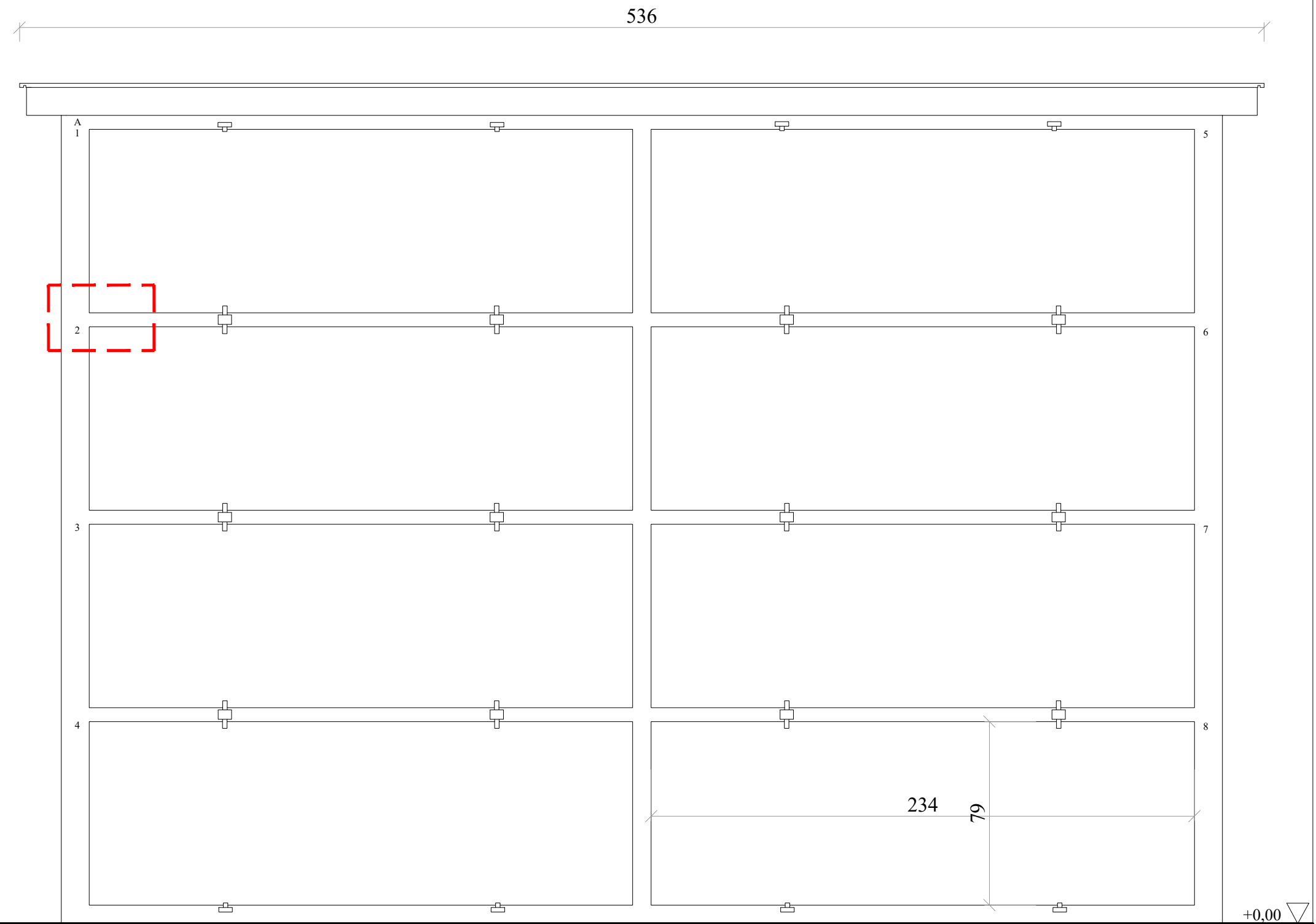
2

# LOCULI DA RICOSTRUIRE

## Prospetto laterale



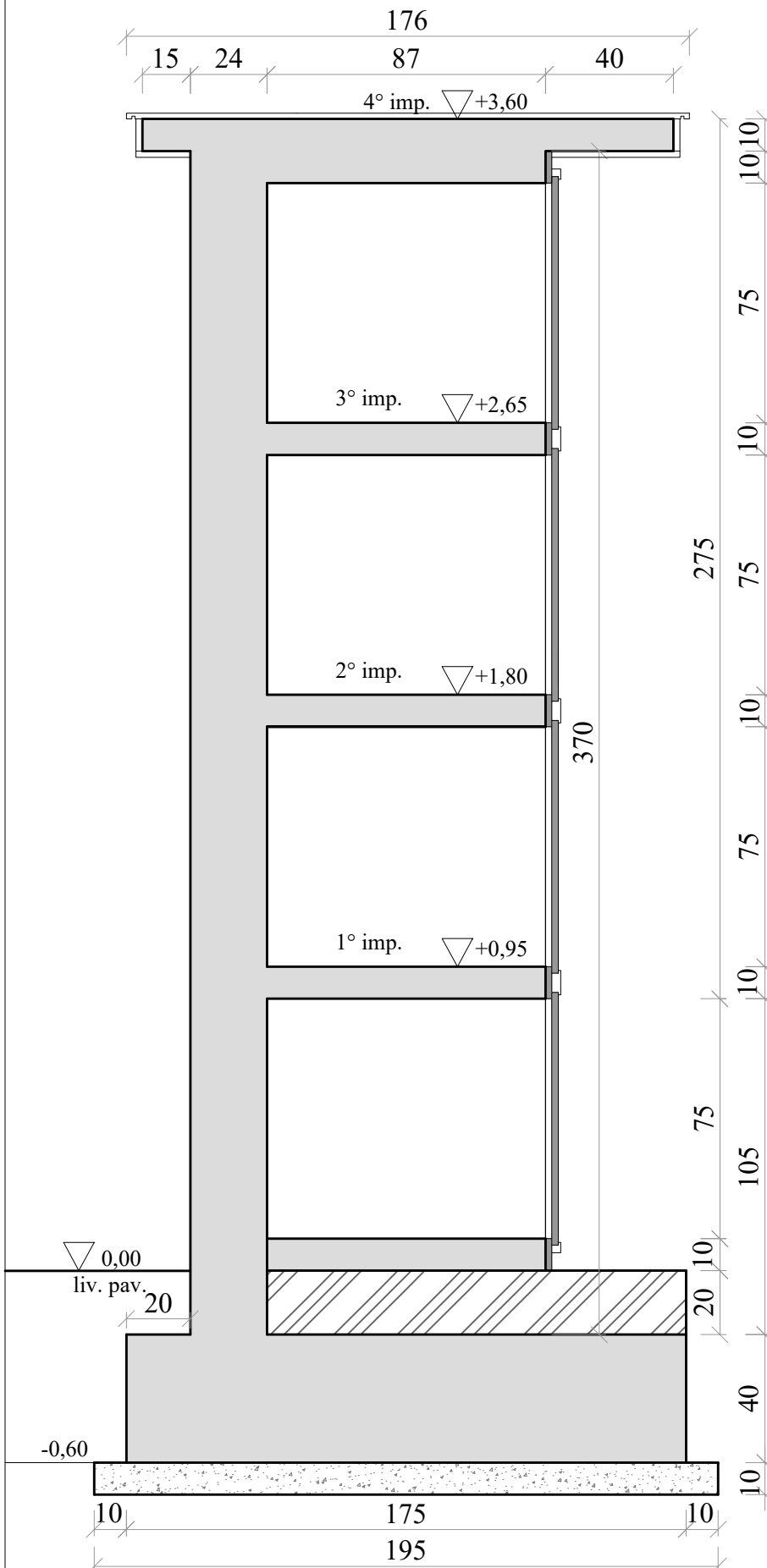
## Prospetto frontale



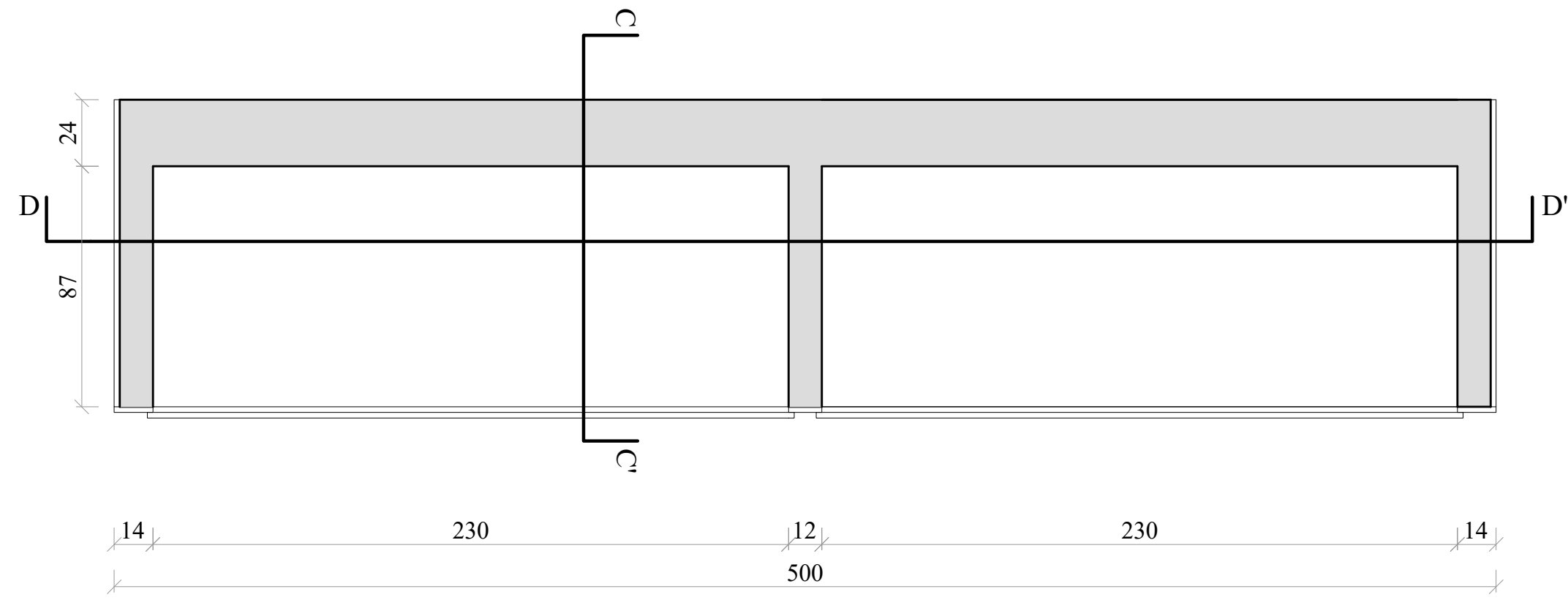
PARTICOLARE RIVESTIMENTO IN MARMO



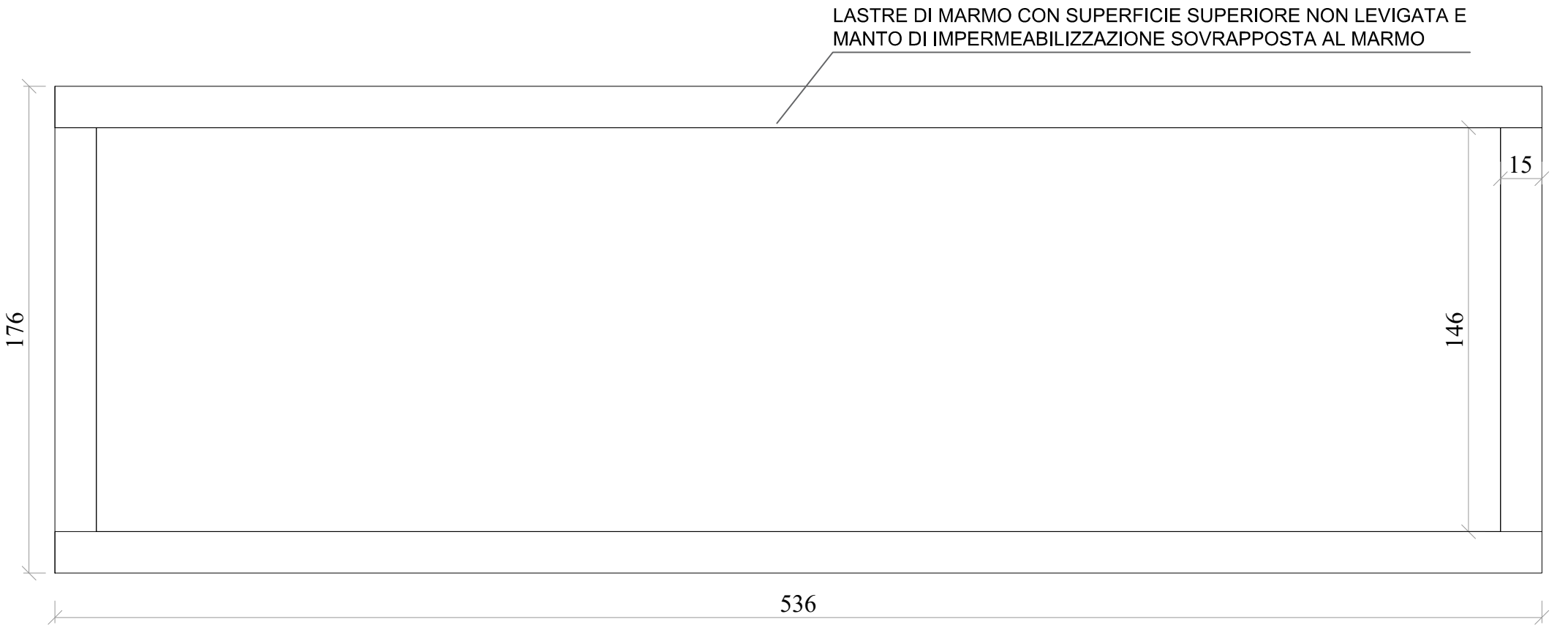
### Sezione C/C'



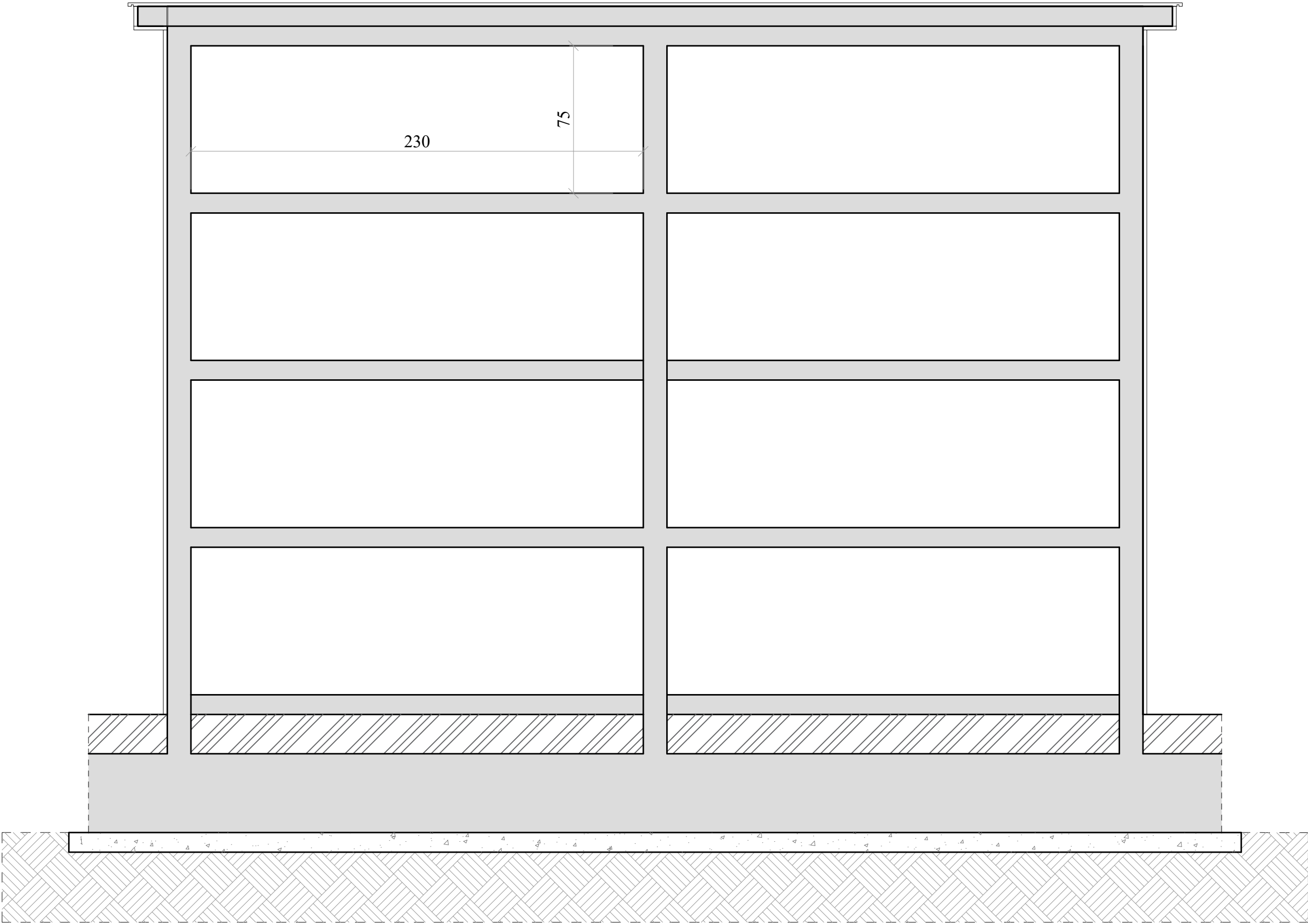
### Pianta



### Pianta Copertura



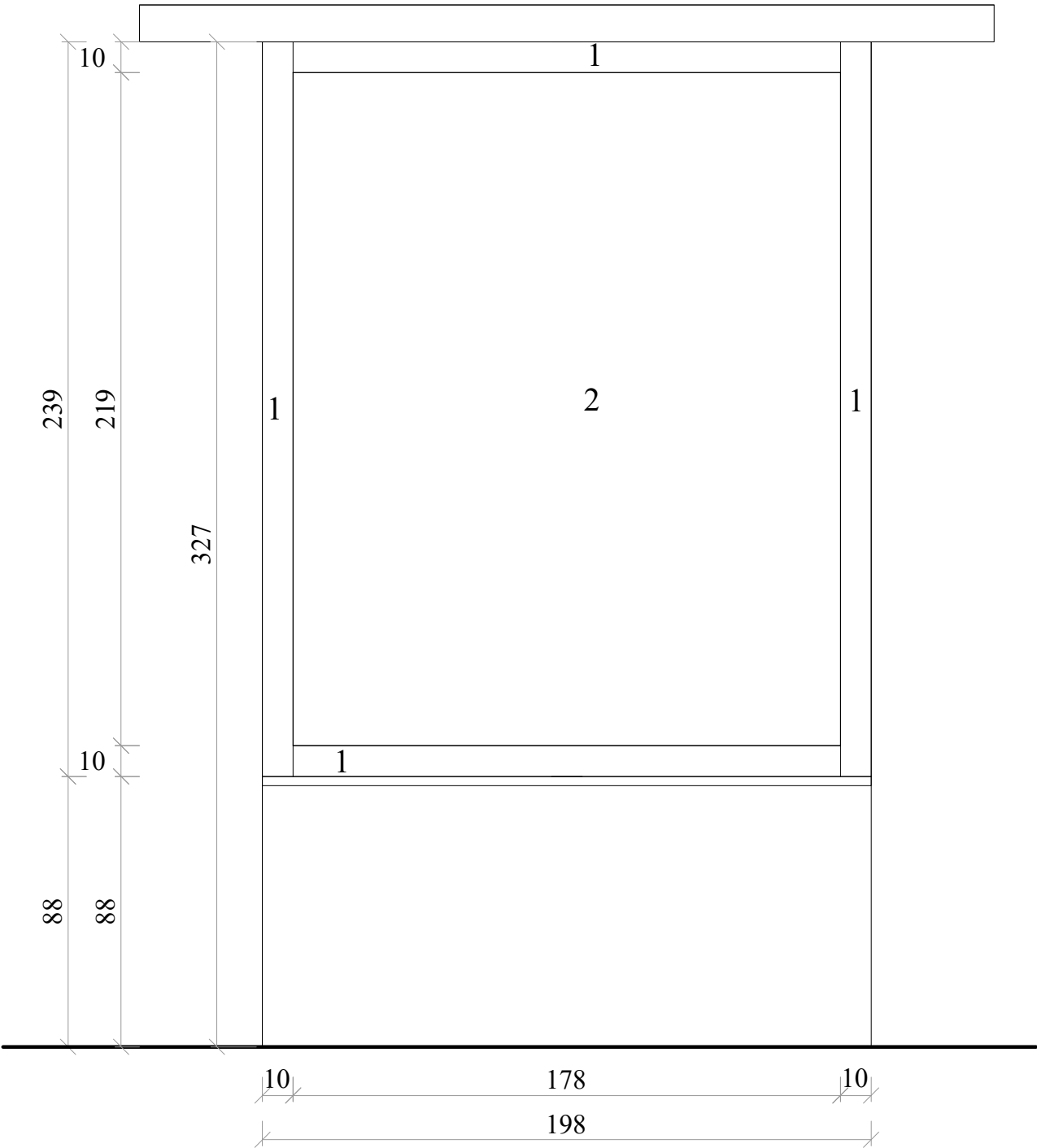
Sezione D/D'



1010  
75  
10  
75  
10  
75  
10  
75  
10  
20  
10  
40  
10  
50  
370  
50  
380  
50

# LOCULI ESISTENTI DA ULTIMARE

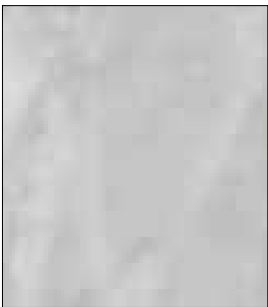
## Prospetto laterale- Particolare Rivestimenti



PARTICOLARE RIVESTIMENTO IN MARMO



1



2